

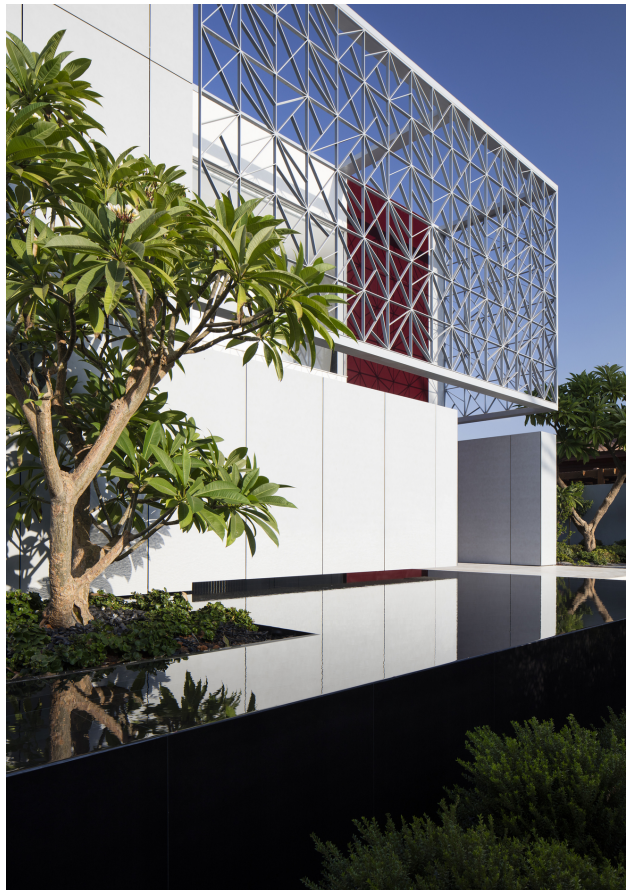


Villa N2

Herzliya, Israel

Architekt	Irene Goldberg, L-V-COUNTRY-IL
Fassade	Largo Swisspearl Nobilis Custom Color
Standort	Herzeliya, Israel
Fotograf	Amit Geron, Tel Aviv , L-V-COUNTRY-IL
Gebäudeart	Residential

SWISSPEARL



This stylish, single-family house in Herzliya, north of Tel Aviv on the Mediterranean coast, has been designed as a succession of interconnected thresholds that proceed through the building. Aluminum latticework screens have been used as a device to create subtle intermediary spaces.

