



**ALU-UNTERKONSTRUKTION**

Horizontalfuge mit Alu-L-Profil .....	4
Horizontalfuge mit Alu-H-Profil .....	5
Vertikalfuge mit Alu-Fugenband 140 mm .....	6
Vertikalfuge mit Alu Hut-Profil .....	7
Dehnfuge .....	8
Sockelabschluss .....	9
Dachanschluss geneigtes Dach .....	10
Dachanschluss Attika .....	11
Ausseneck .....	12
Ausseneckabschluss .....	13
Inneneck .....	14
Inneneck mit Blechabschluss .....	15
Fensterleibung .....	16
Fensterleibung mit vorspringenden Fassadenplattenstreifen .....	17
Fensterleibung mit Blech .....	18
Fenstersturz .....	19
Fenstersturz mit Raffstore .....	20
Fenstersohlbank .....	21

**HOLZ-UNTERKONSTRUKTION**

Horizontalfuge mit Alu-L-Profil .....	22
Horizontalfuge mit Alu-H-Profil .....	23
Vertikalfuge mit EPDM-Fugenband 120 mm .....	24
Vertikalfuge mit Alu Hut-Profil .....	25
Dehnfuge .....	26
Sockelabschluss .....	27
Dachanschluss geneigtes Dach .....	28
Dachanschluss Attika .....	29

Ausseneck .....	30
Ausseneck mit Kreuzprofil .....	31
Inneneck .....	32
Fensterleibung mit Fassadenplattenstreifen .....	33
Fensterleibung mit Blech .....	34
Fenstersturz .....	35
Fenstersturz mit Raffstore .....	36
Fenstersohlbank .....	37

**ALU-UNTERKONSTRUKTION GEKLEBT**

Horizontalfuge mit Alu-L-Profil .....	38
Horizontalfuge mit Alu-H-Profil .....	39
Vertikalfuge .....	40

**HIDDEN-FIX**

Horizontalfuge .....	41
Vertikalfuge .....	42
Dehnfuge .....	43
Sockelabschluss .....	44
Dachanschluss geneigtes Dach .....	45
Dachanschluss Attika .....	46
Ausseneck .....	47
Inneneck .....	48
Inneneck Wandanschluss .....	49
Fensterleibung .....	50
Fenstersturz .....	51
Fenstersturz mit Raffstore .....	52
Fenstersohlbank .....	53

### Download: ZIP-Archiv gesamt Details



Alu-Unterkonstruktion



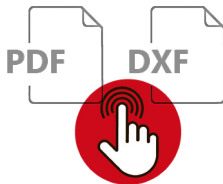
Holz-Unterkonstruktion



Hidden-Fix

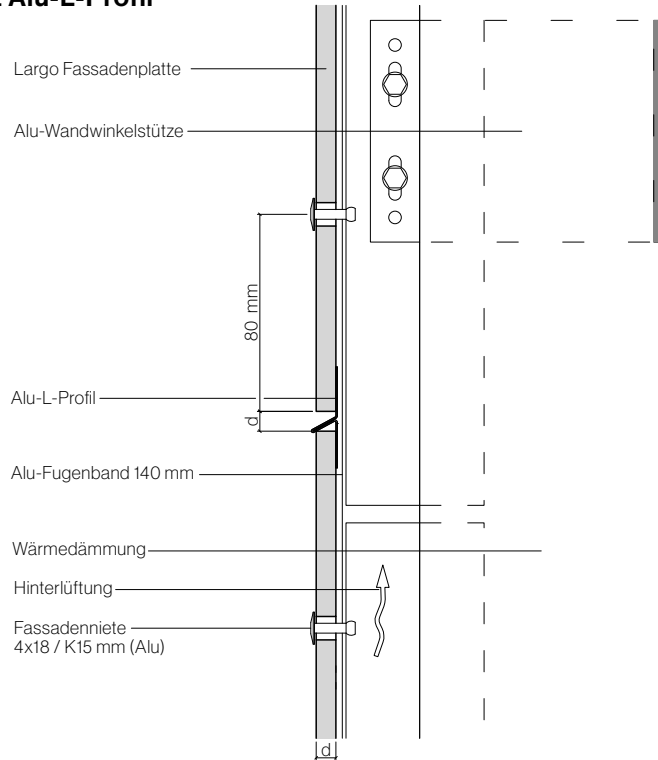
#### Info:

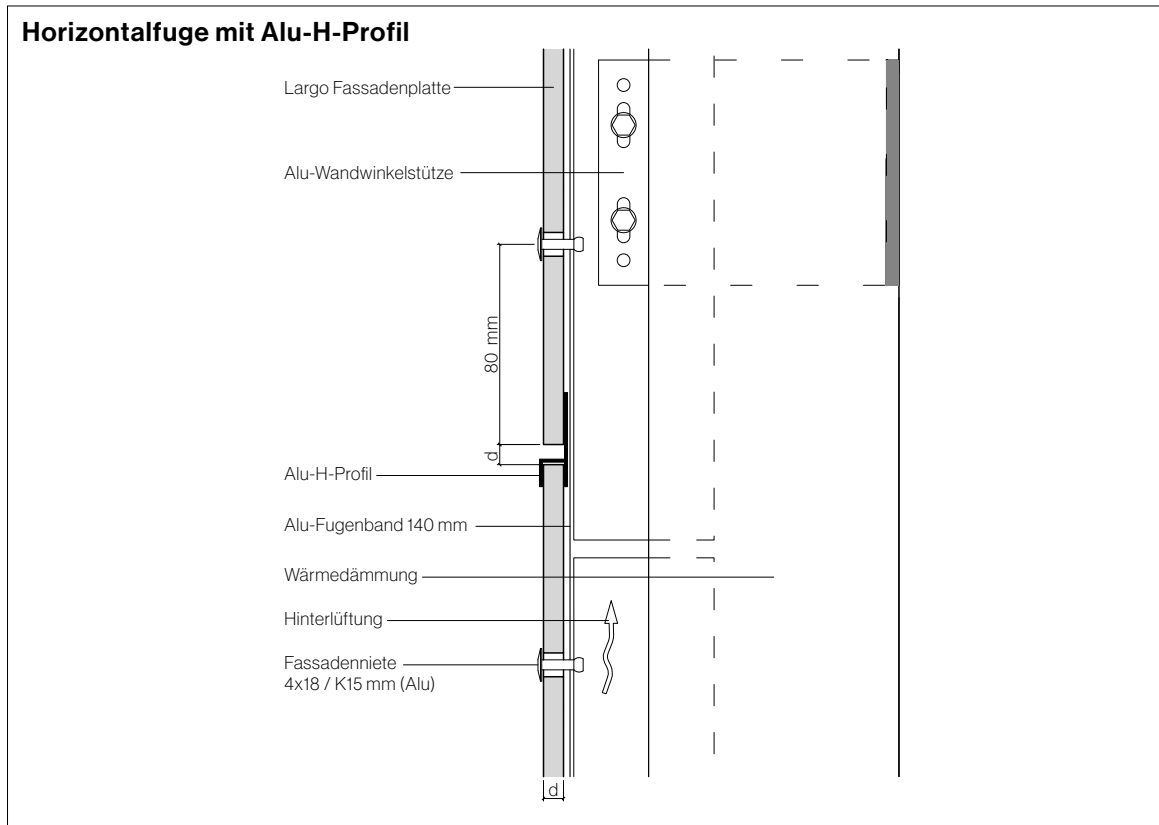
Beim Klick auf das Symbol wird das entsprechende Detail geladen und kann gespeichert werden.

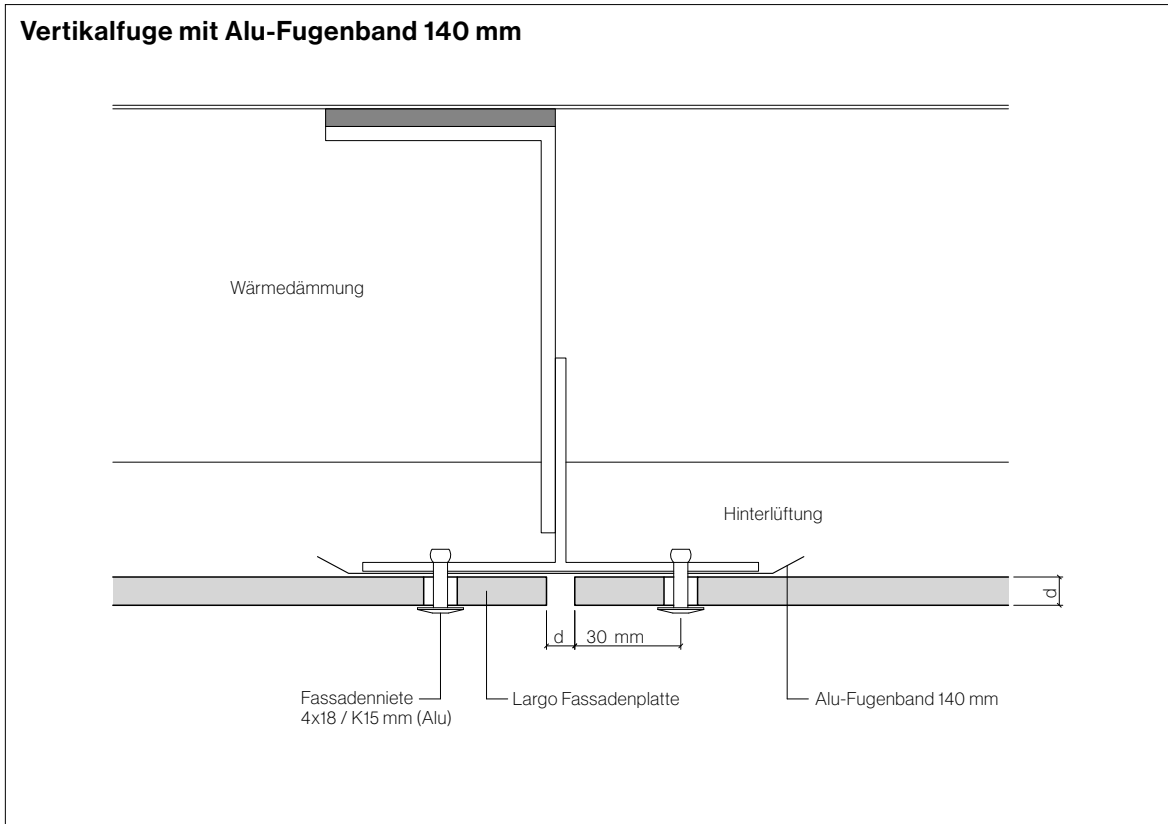


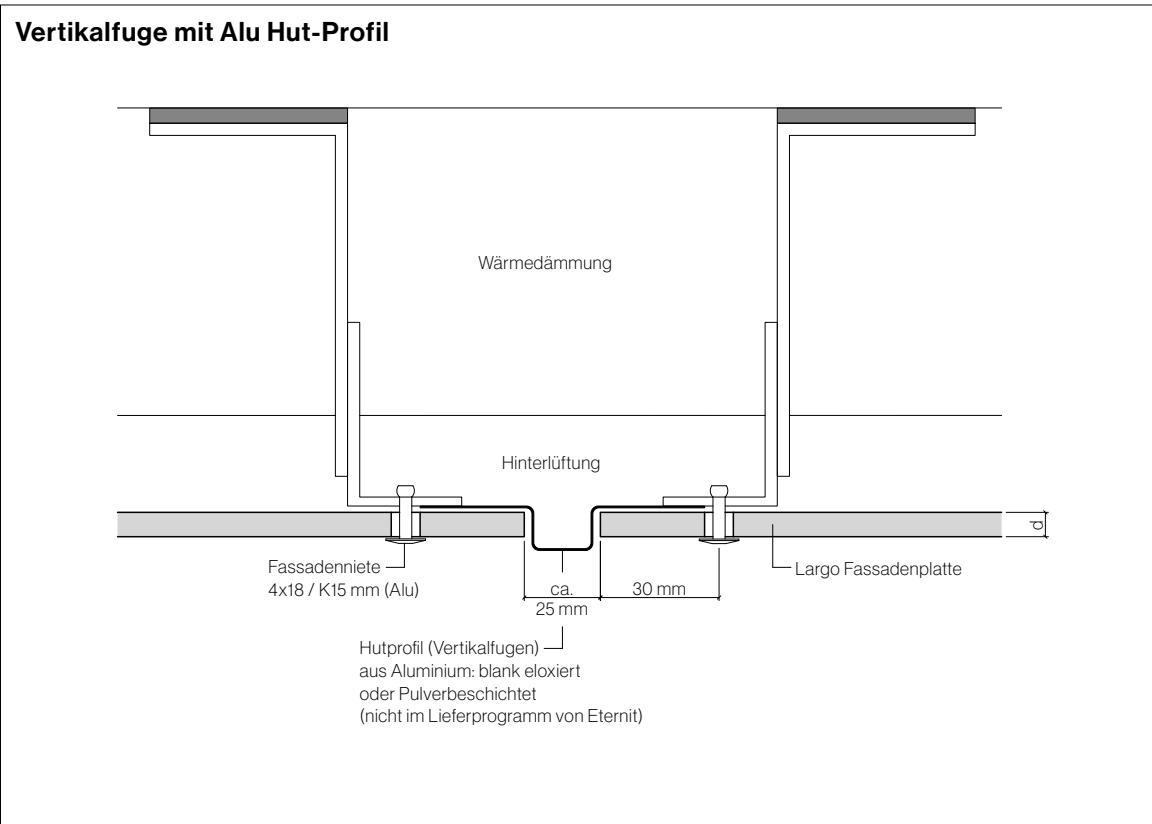


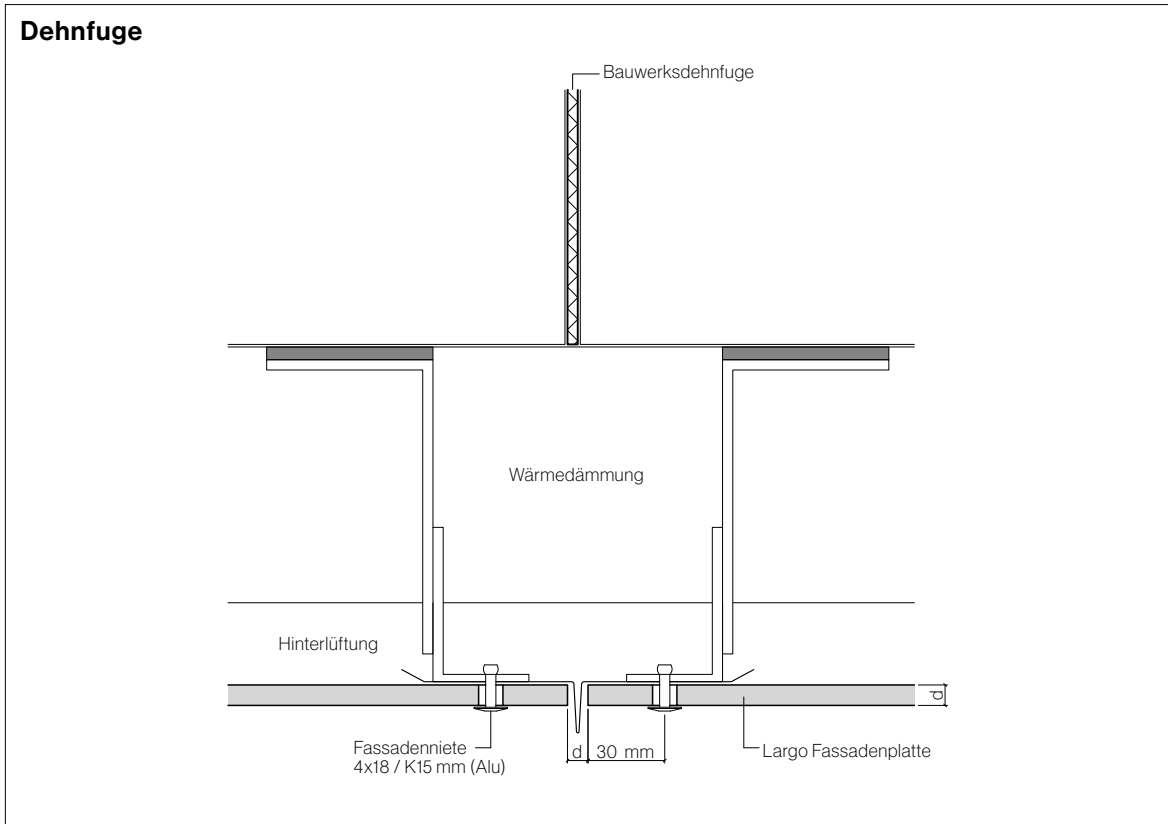
### Horizontalfuge mit Alu-L-Profil



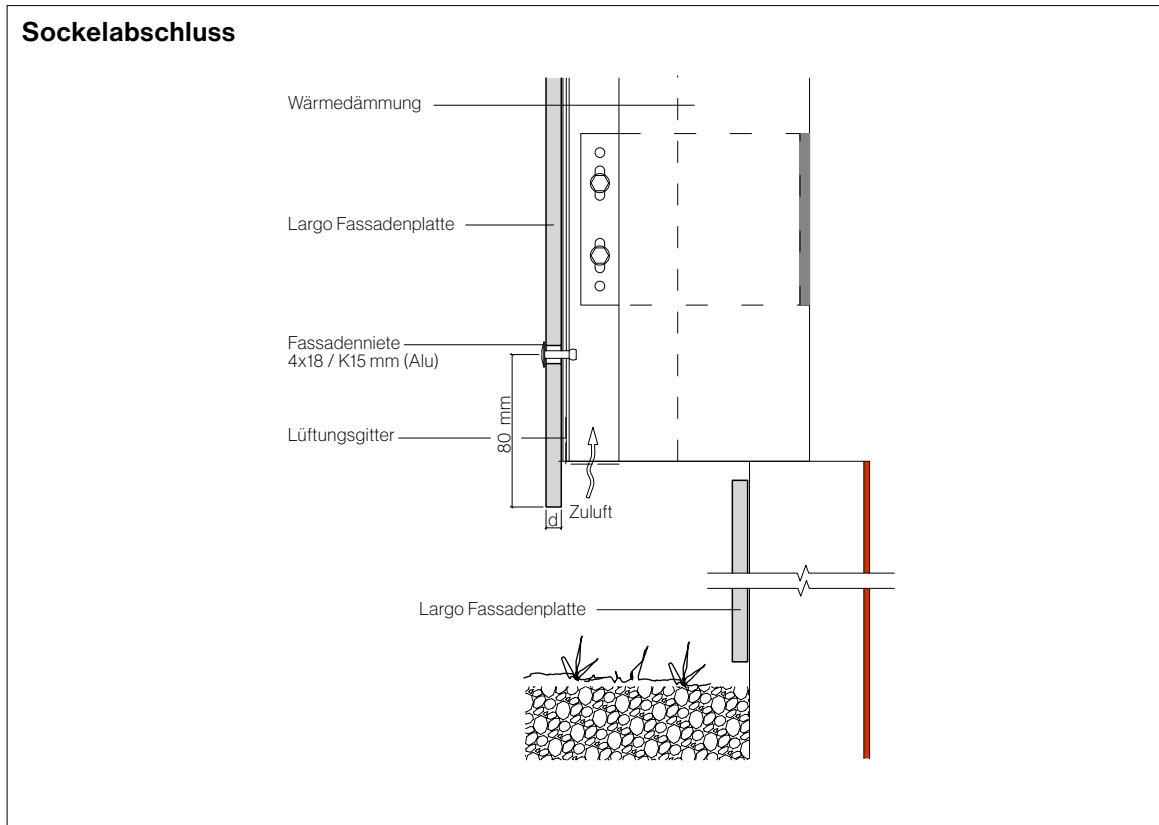






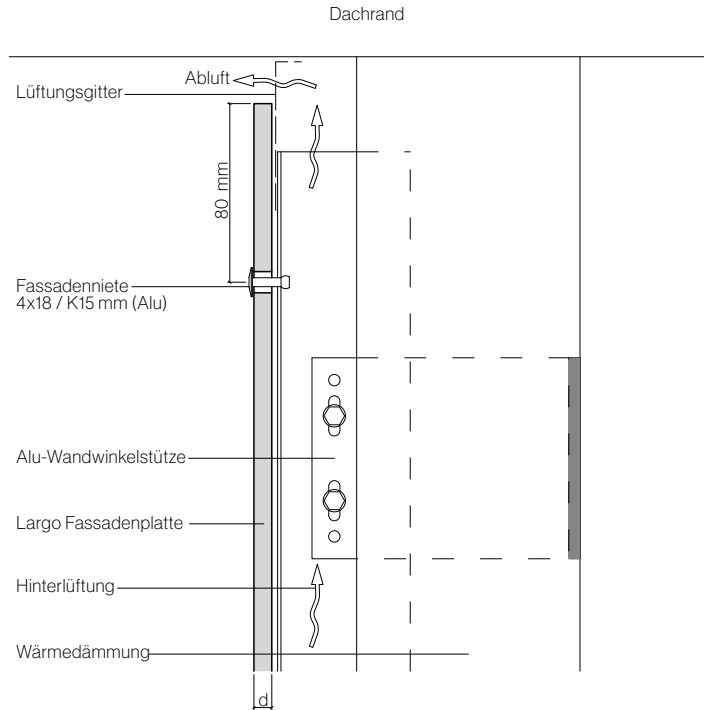


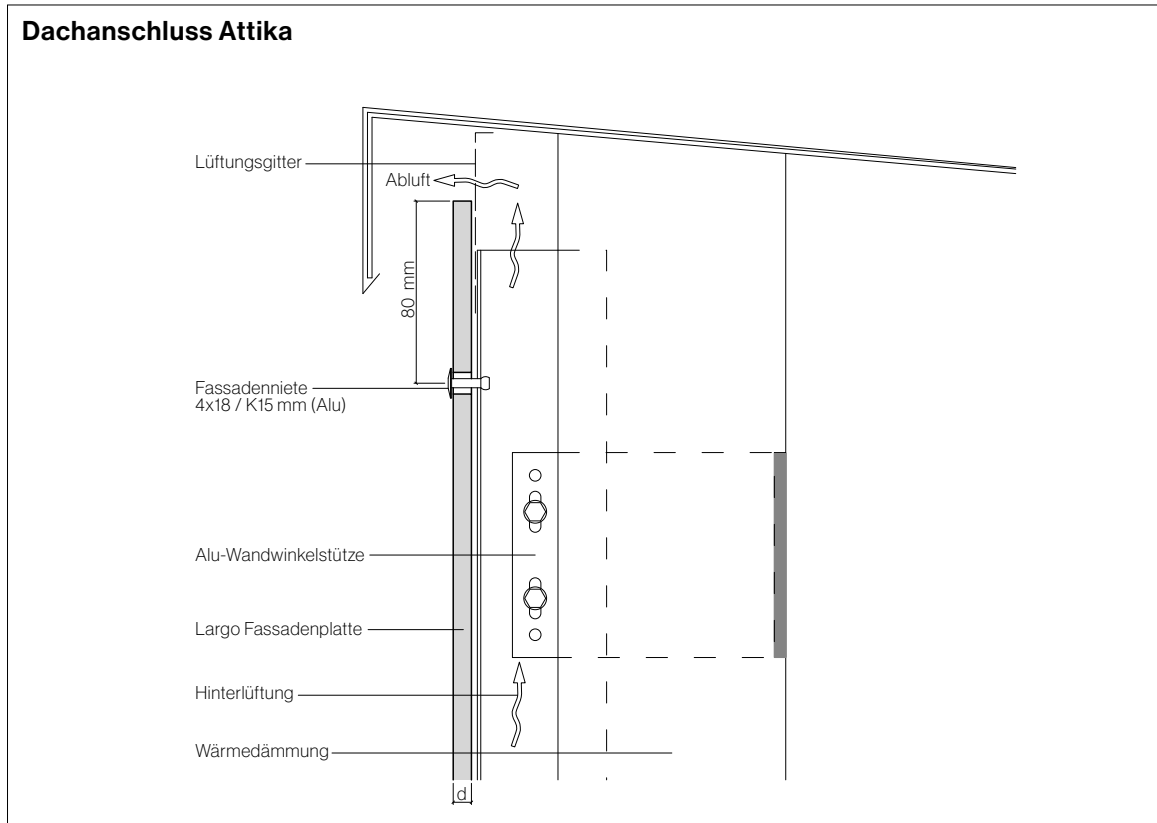


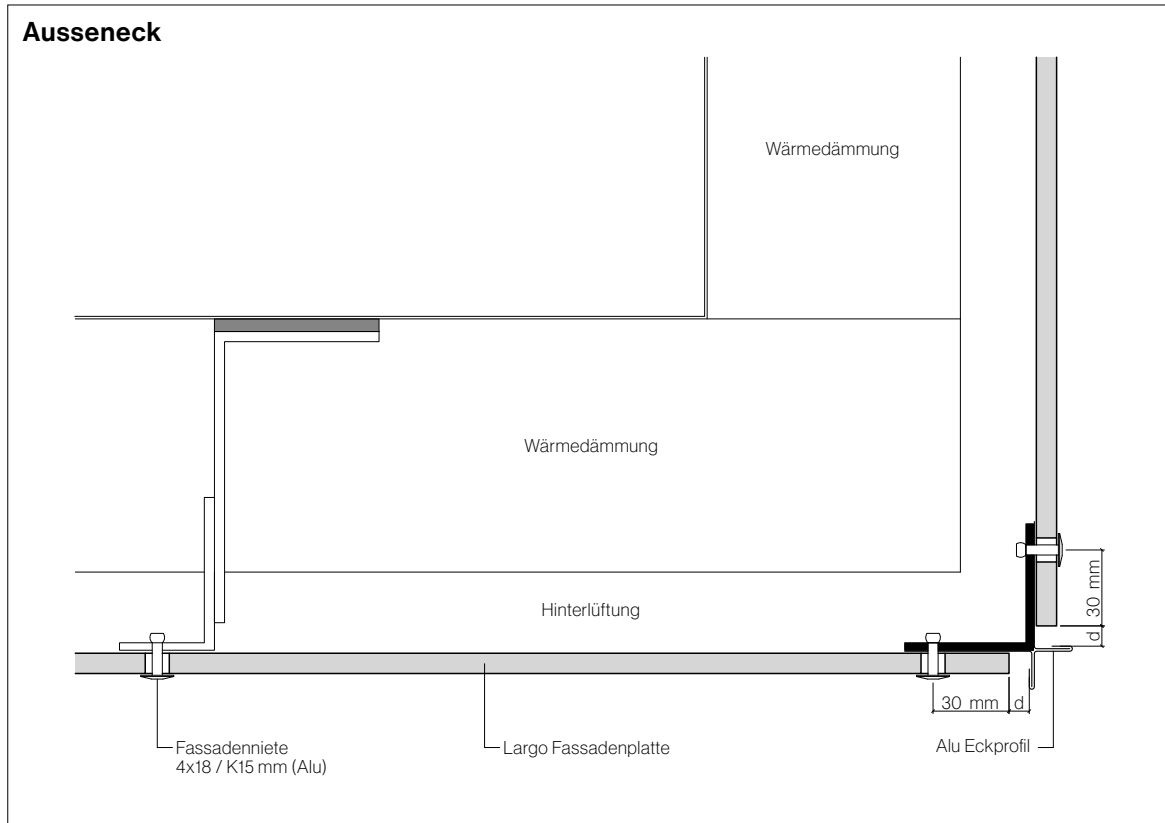


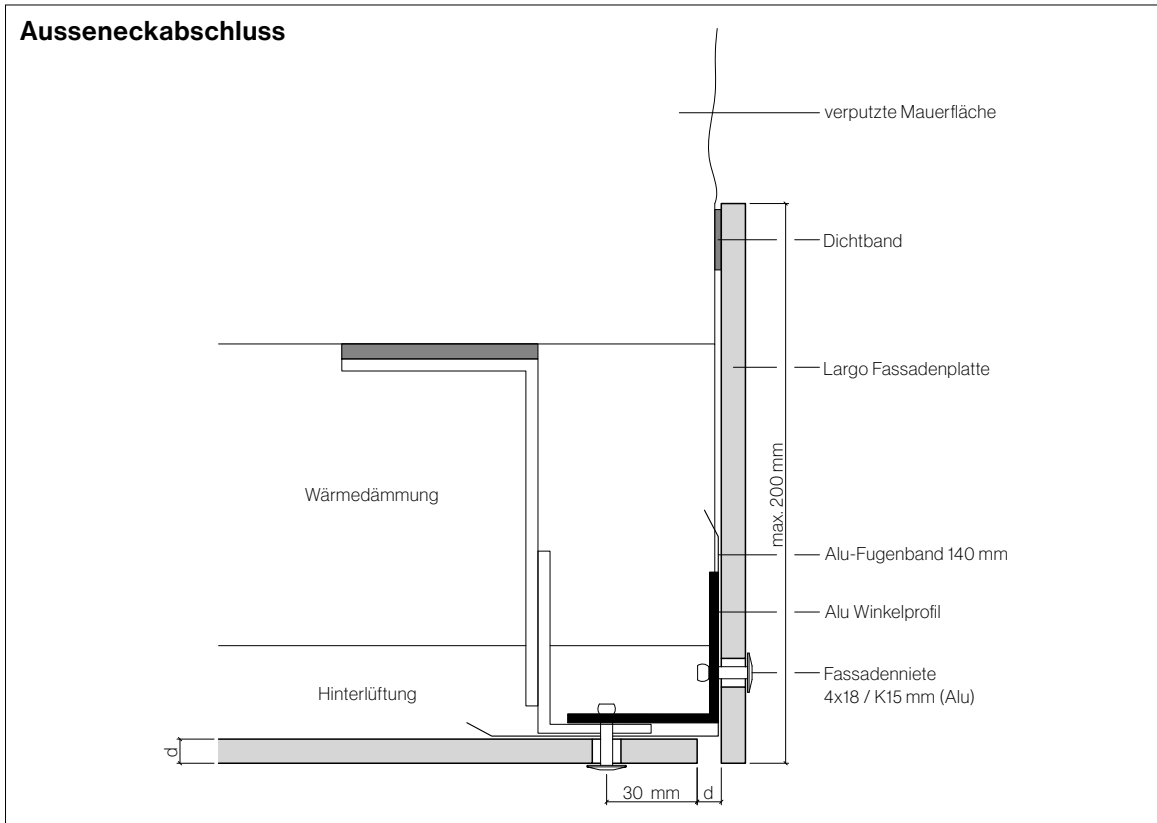


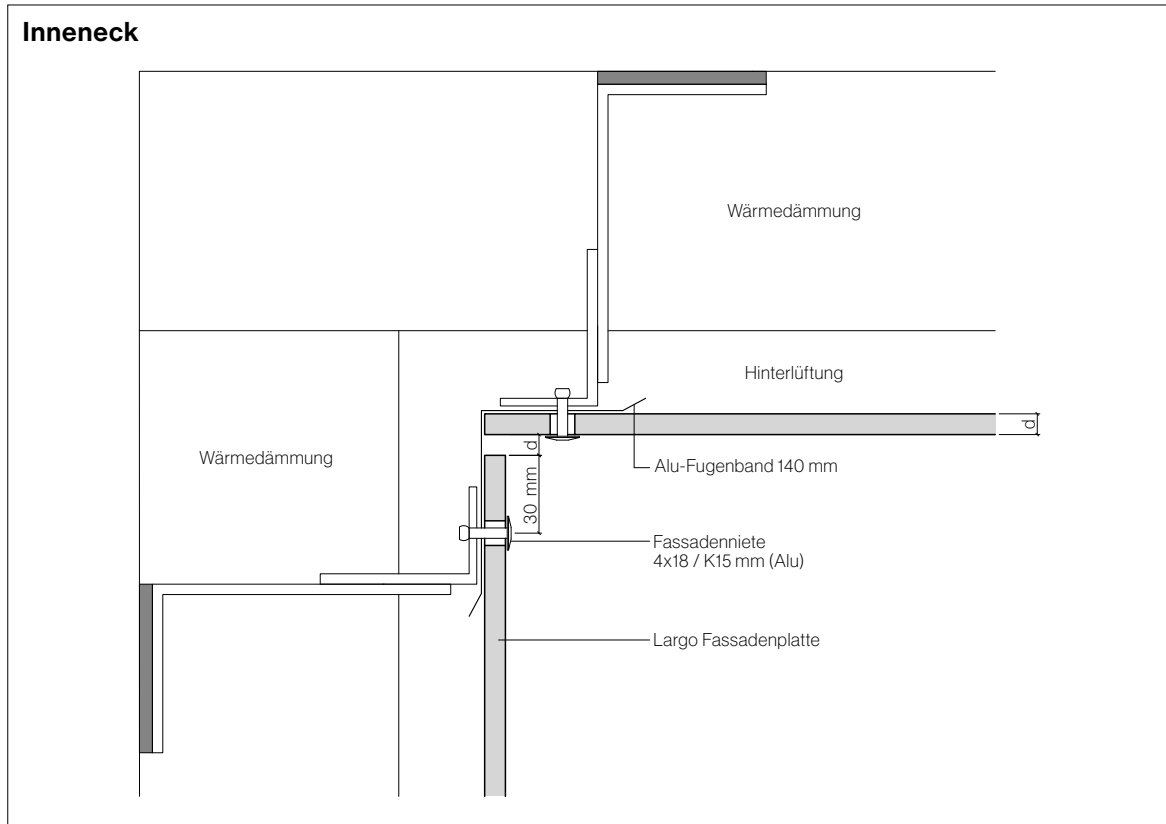
### Dachanschluss geneigtes Dach

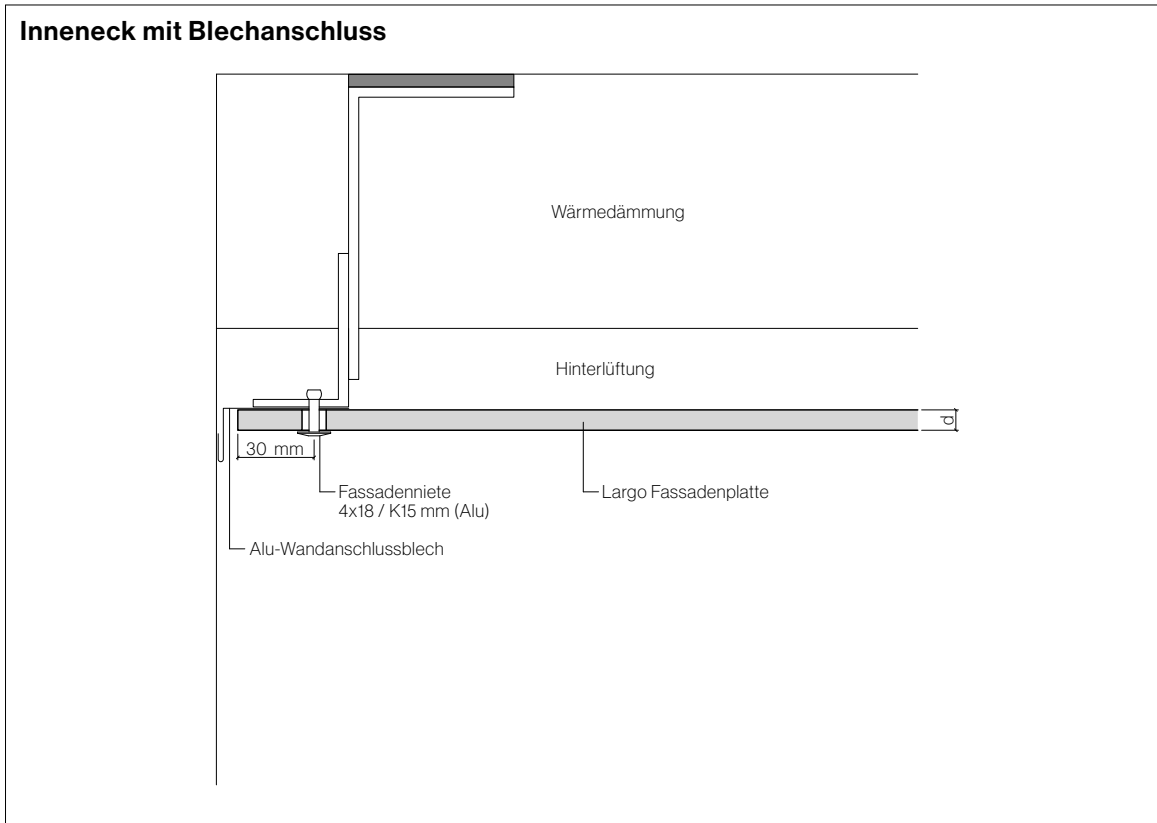






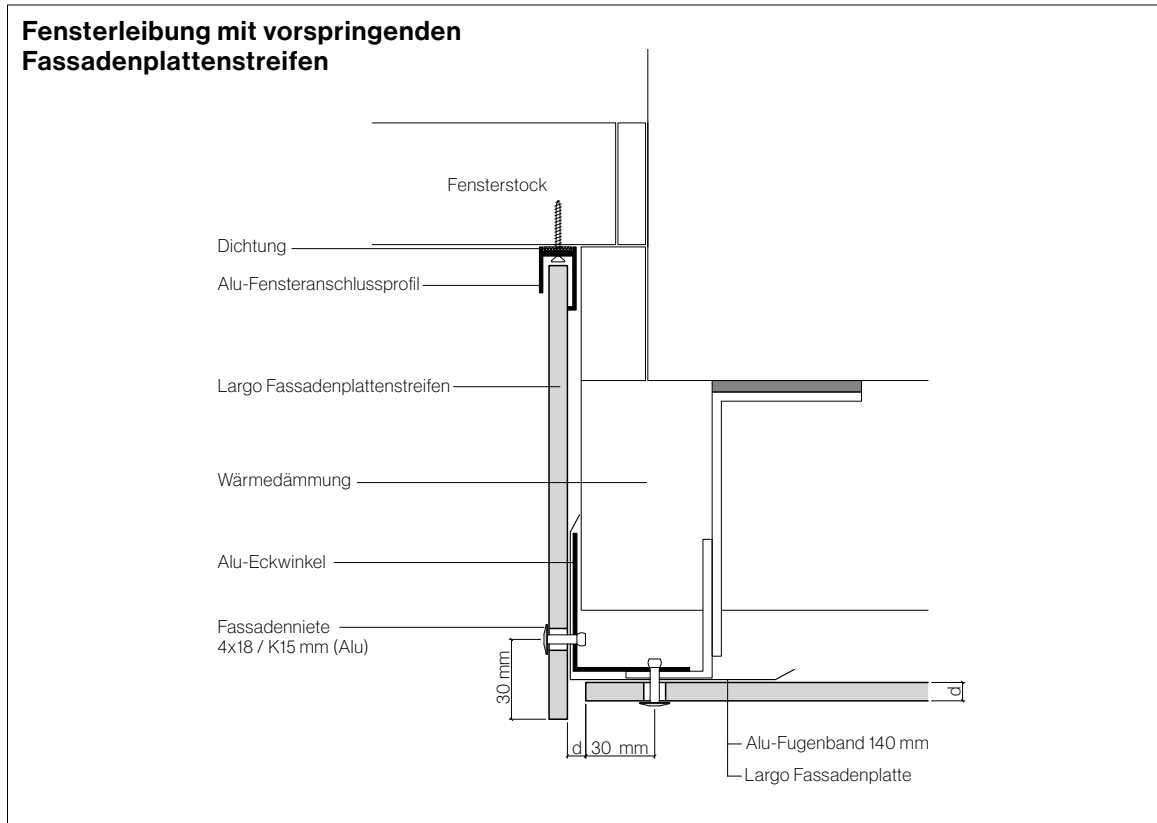






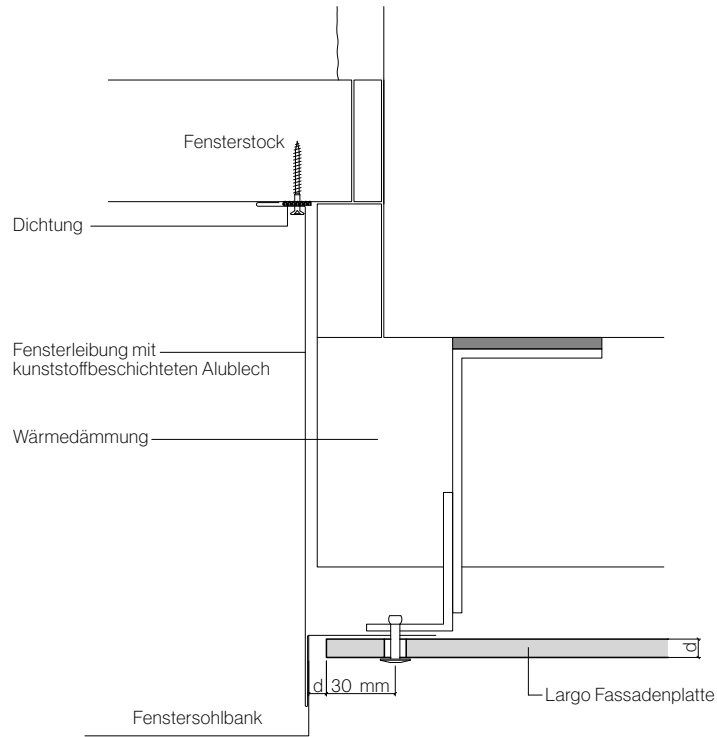


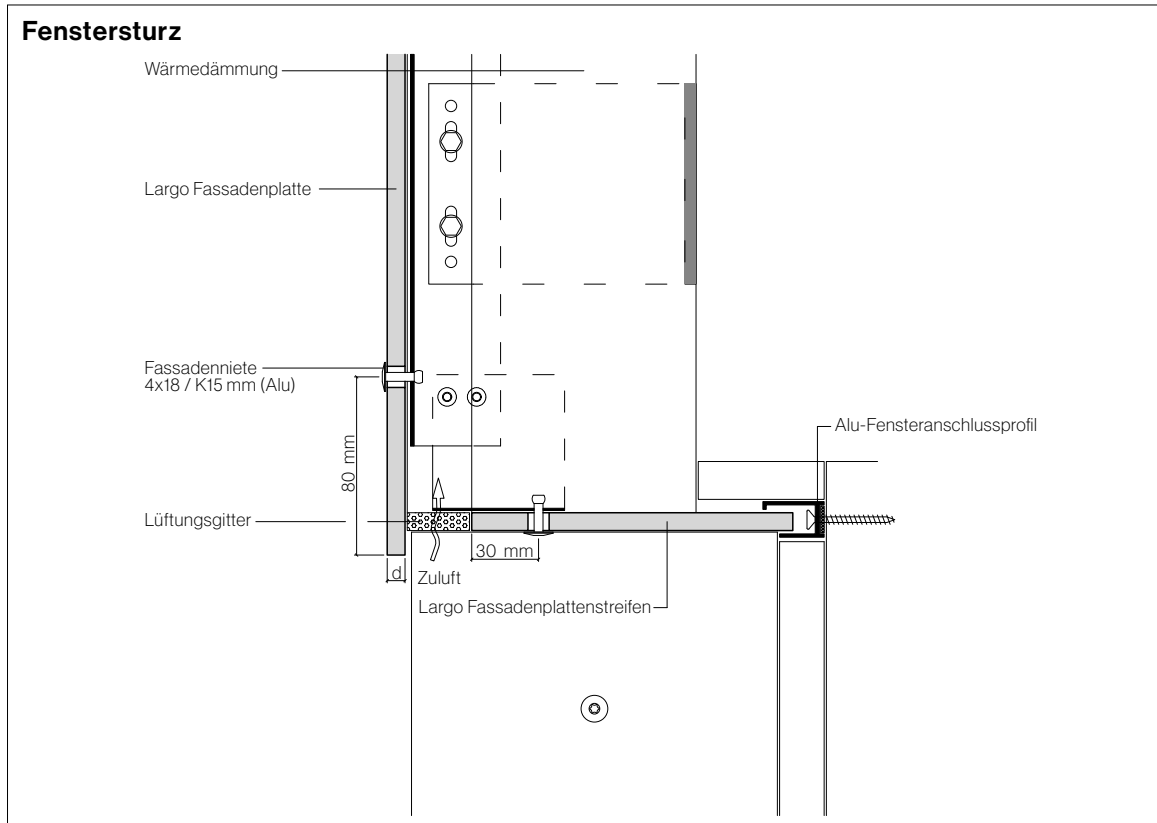






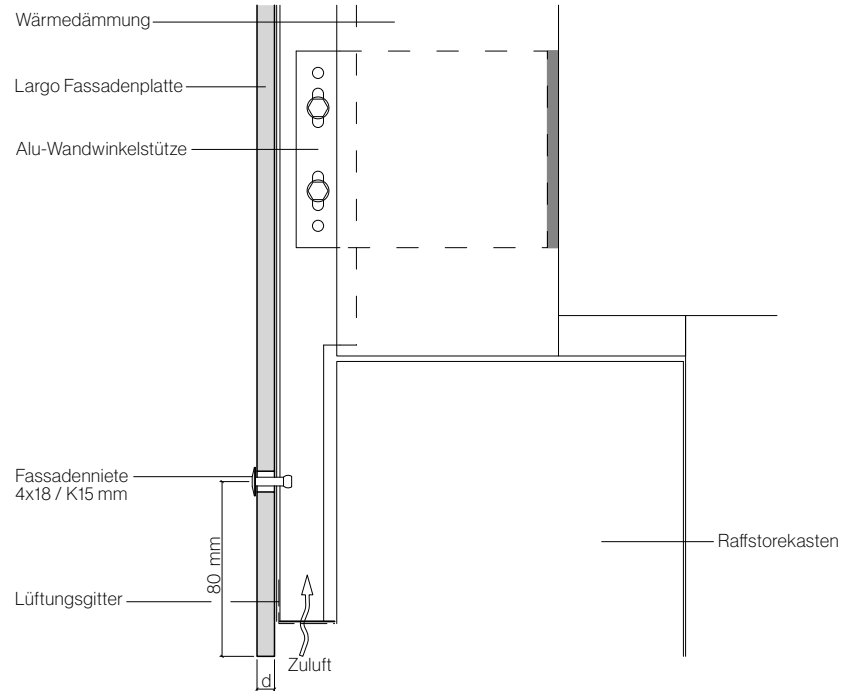
### Fensterleibung mit Blech

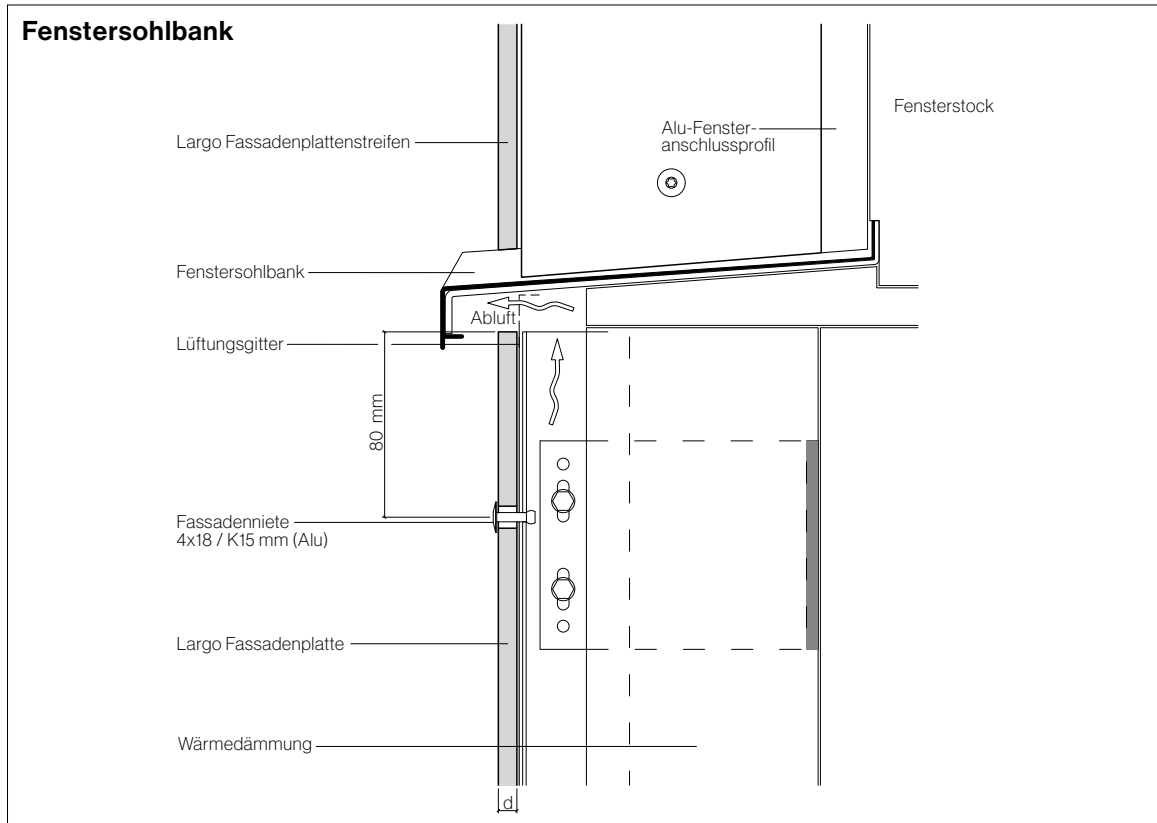






### Fenstersturz mit Raffstore







### Horizontalfuge mit Alu-L-Profil

Largo Fassadenplatte

Konterlattung 5x5 cm

Tragplatte 12x3 cm oder  
10x3 cm bzw.  
Mittelunterstützung 5x3 cm

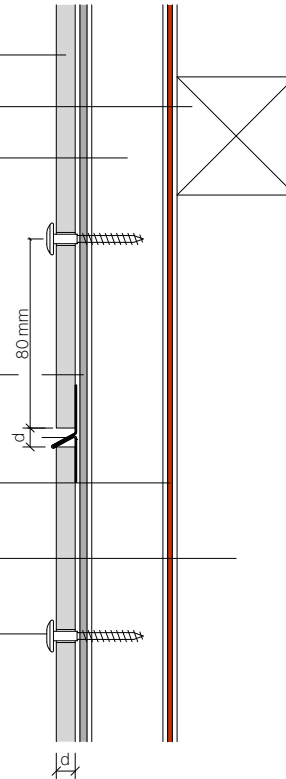
EPDM-Fugenband

Alu-L-Profil

Winddichtung (optional)

Wärmedämmung

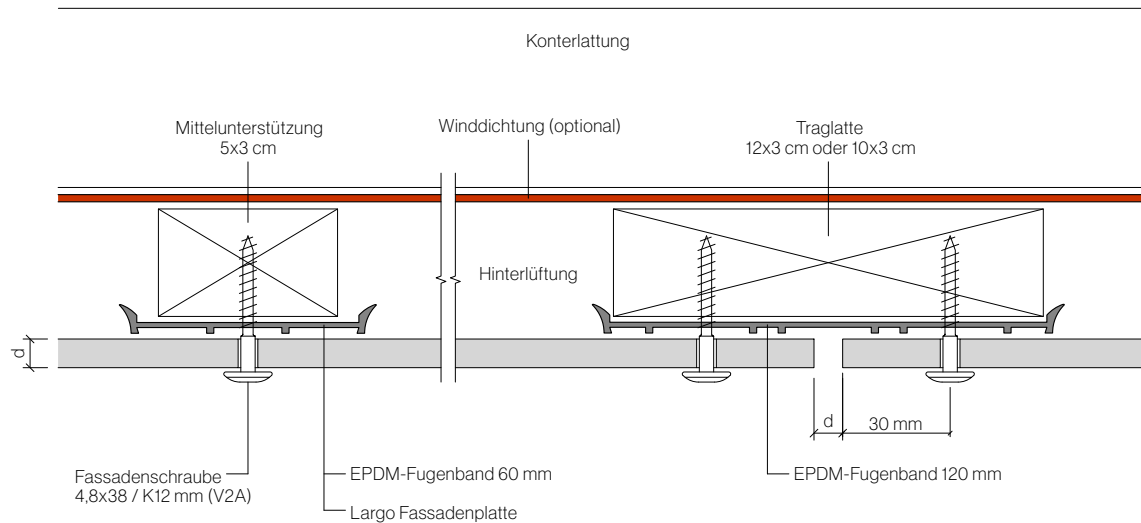
Fassadenschraube  
4,8x38 / K12 mm (V2A)



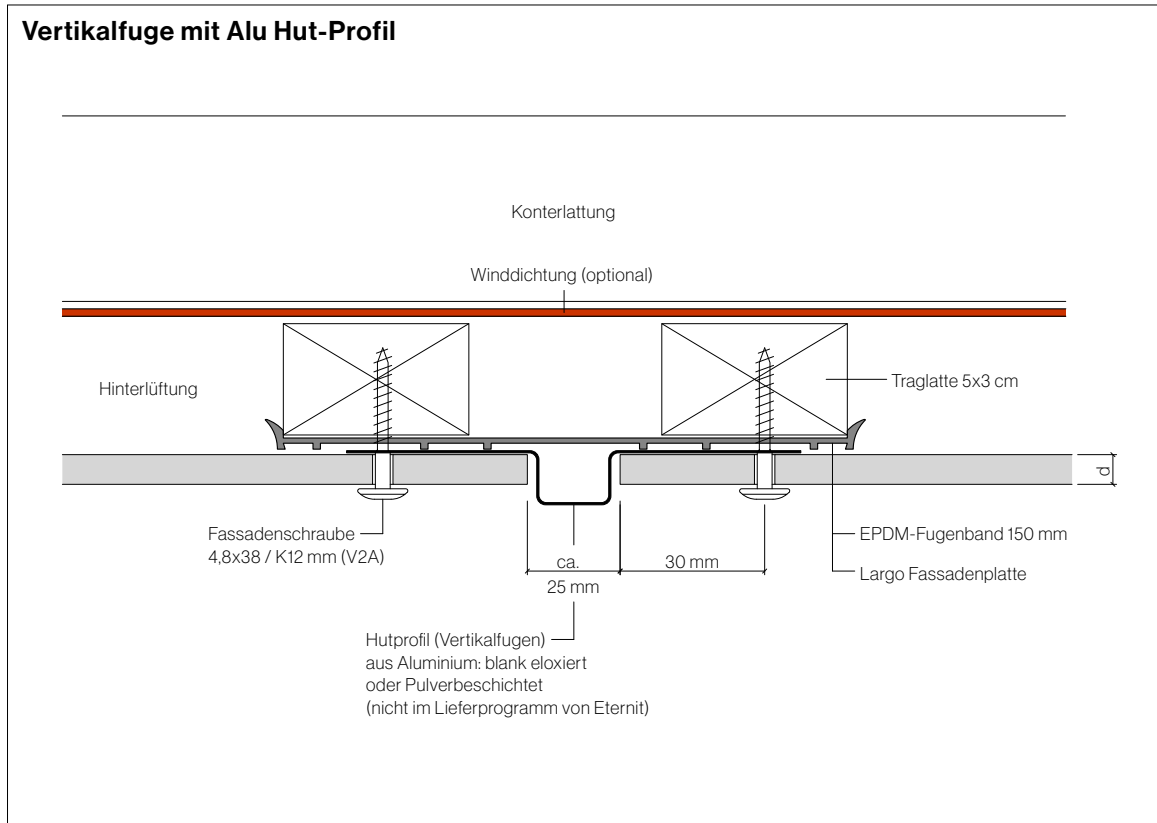


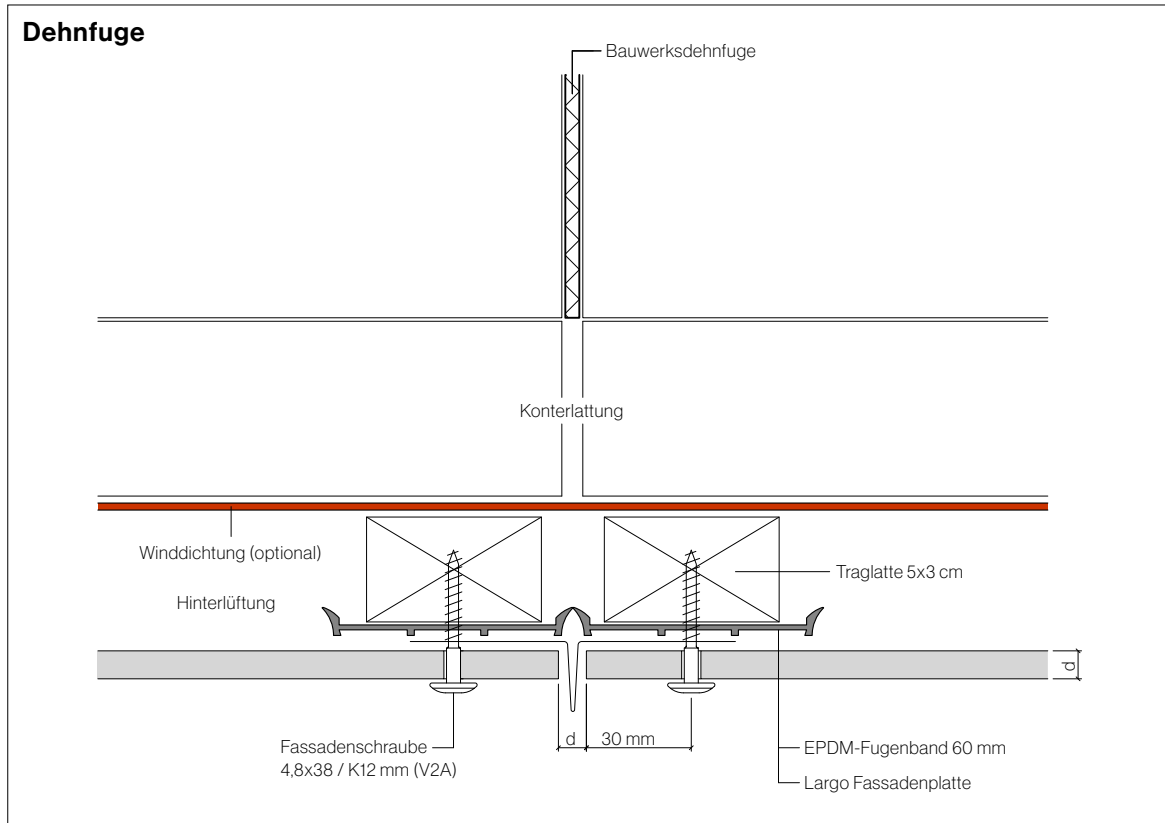


### Vertikalfuge mit EPDM-Fugenband 120 mm



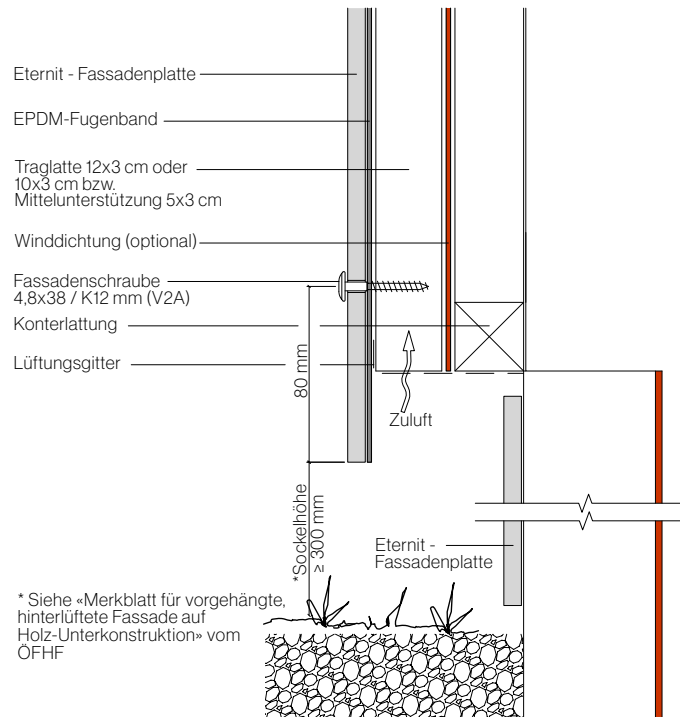


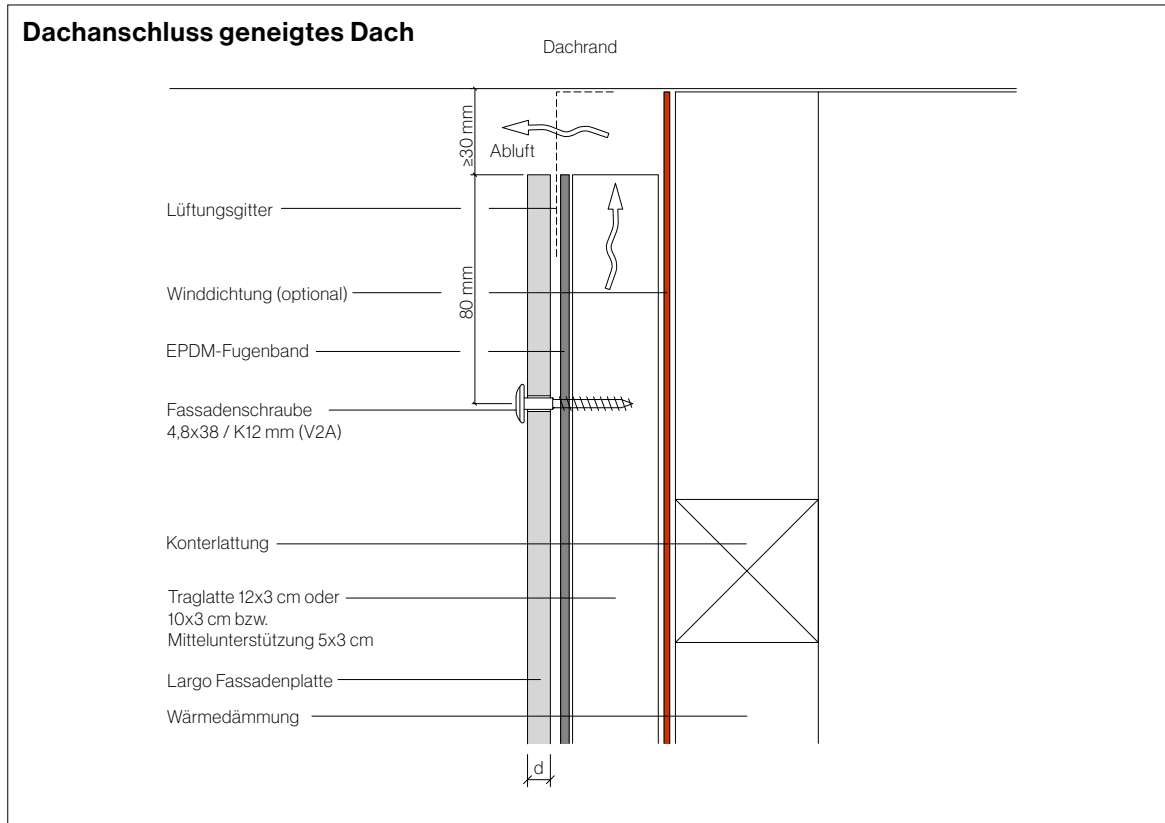


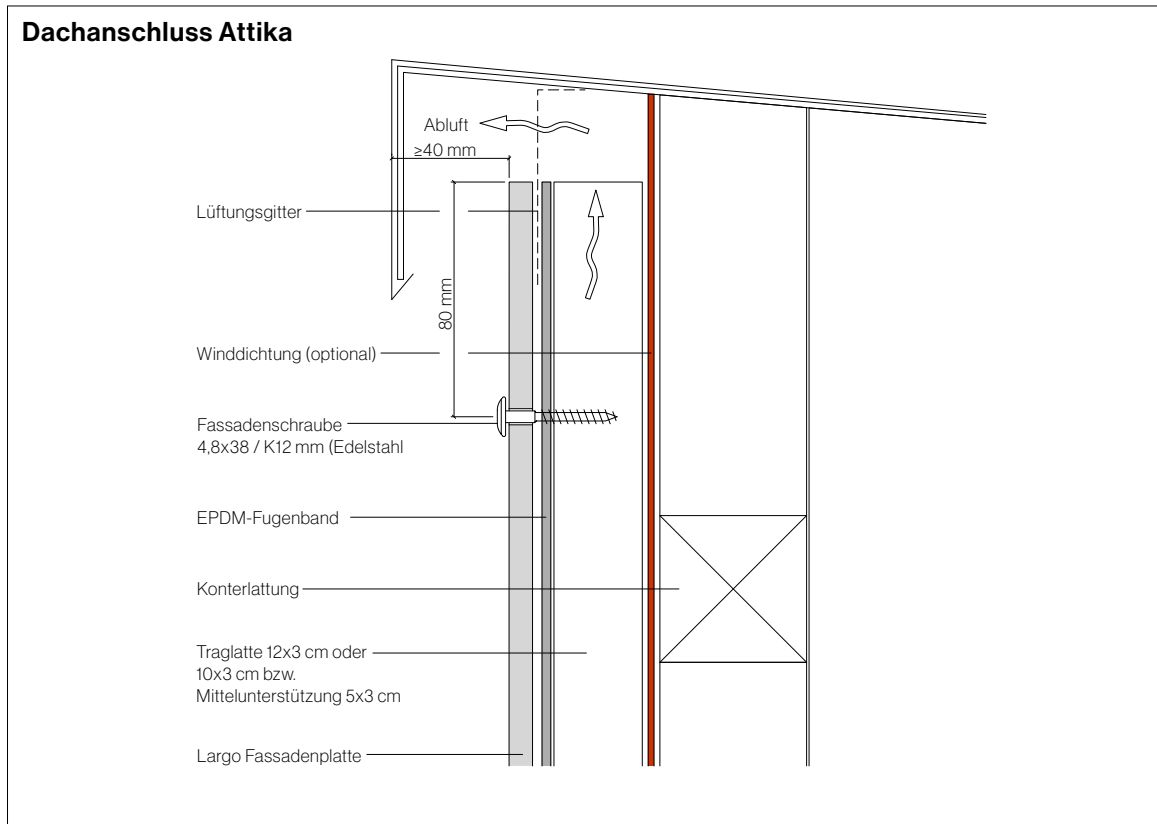


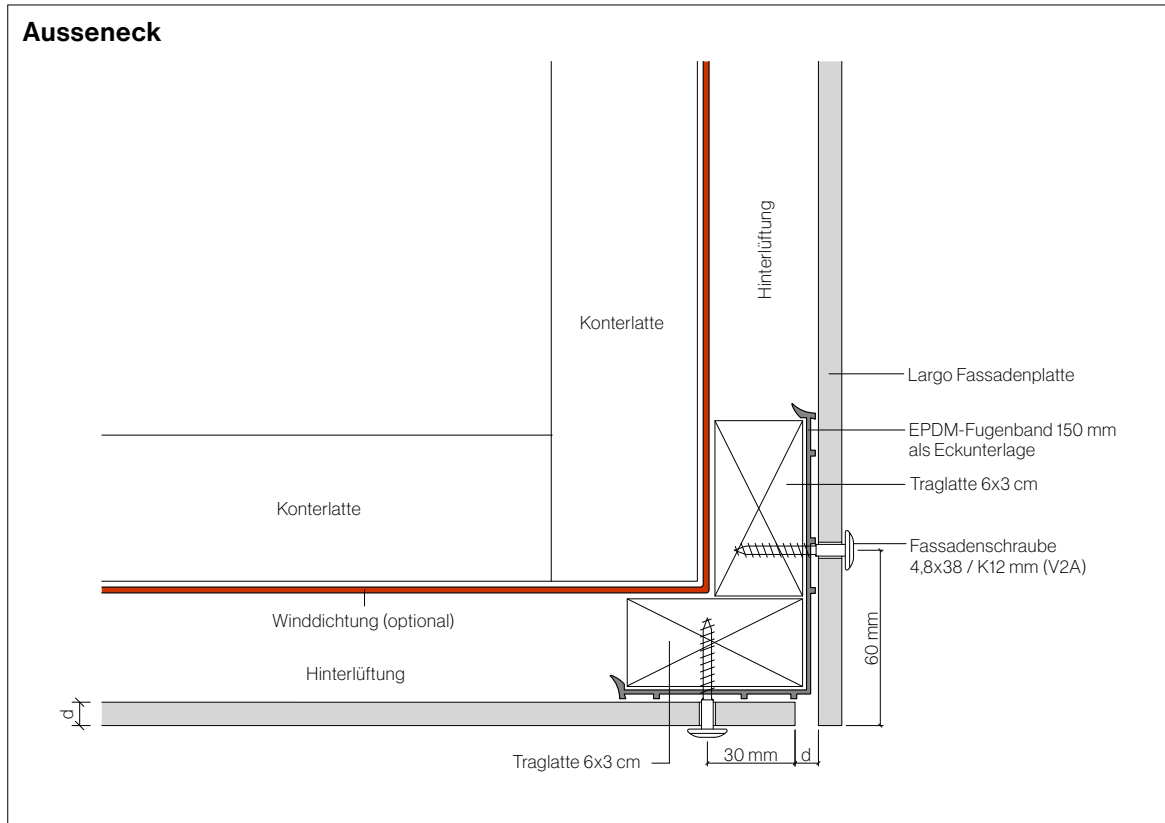


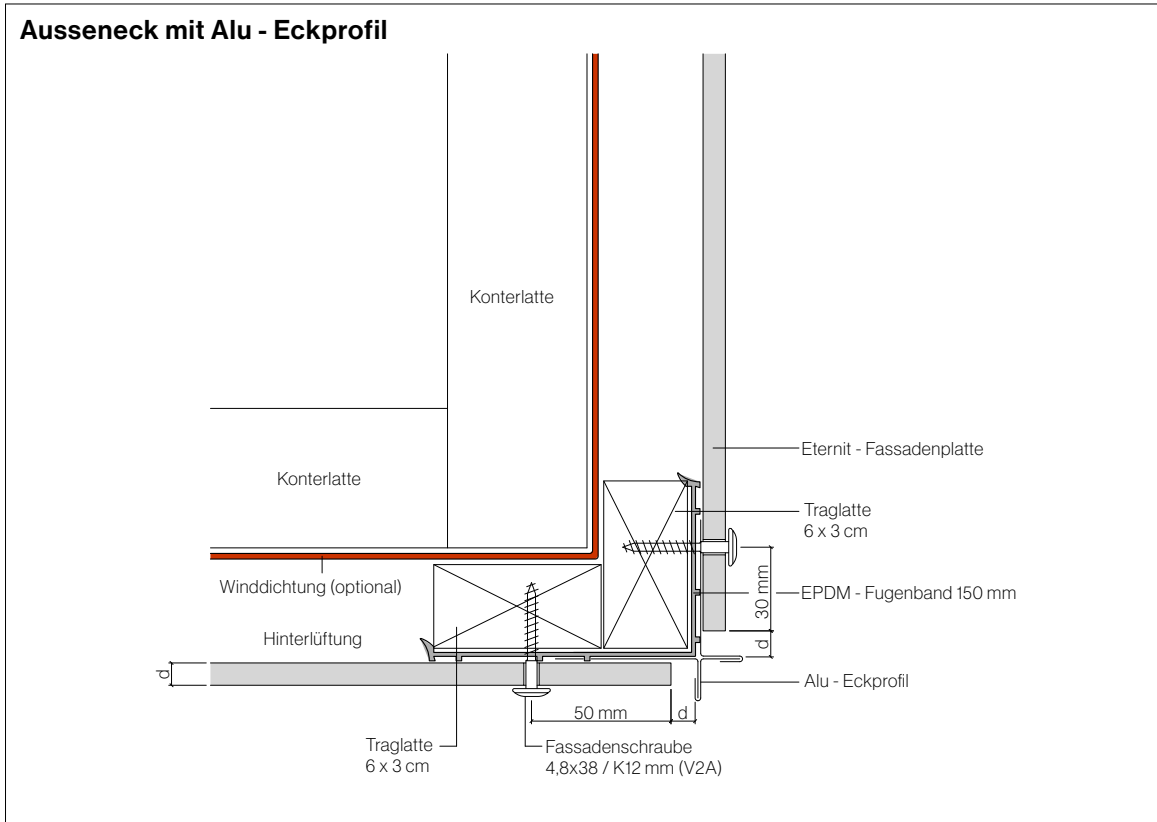
## Sockelabschluss

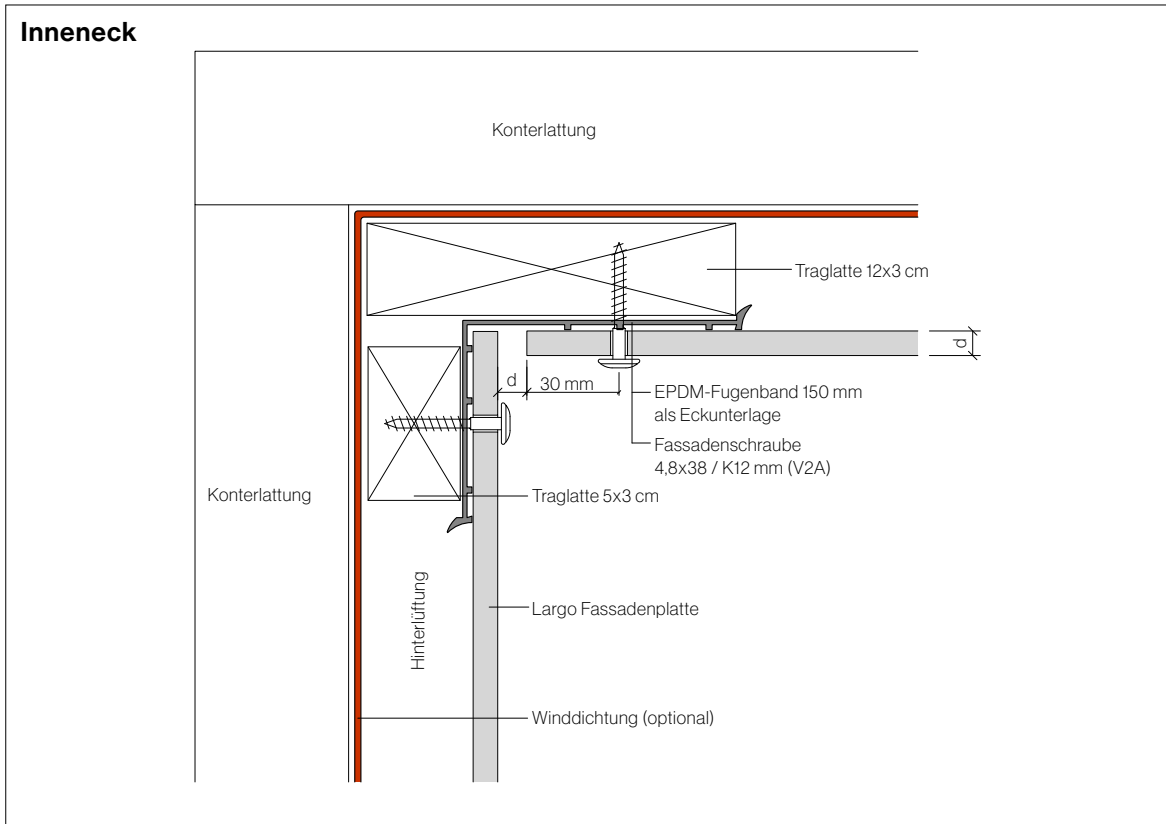




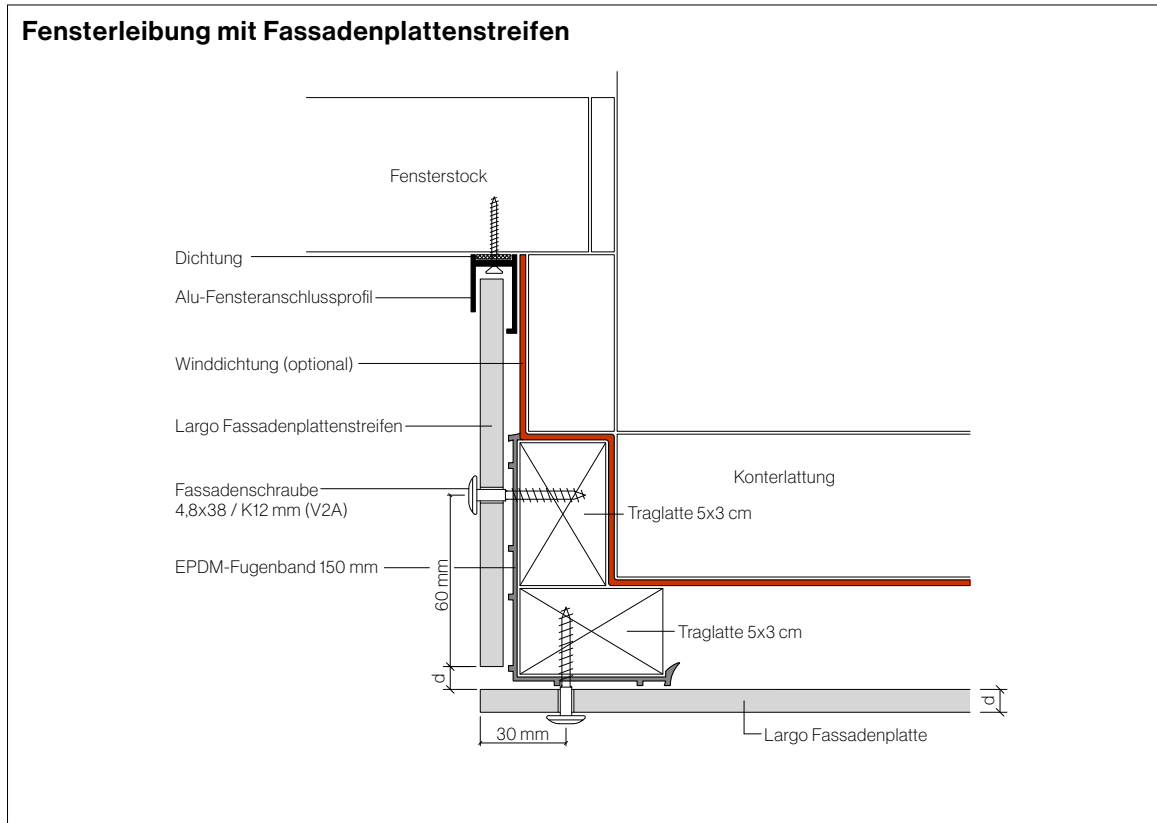






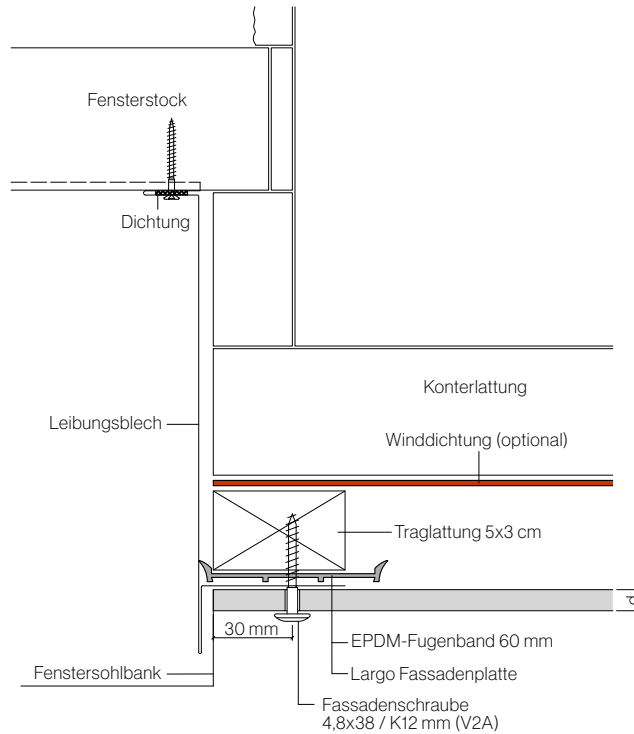


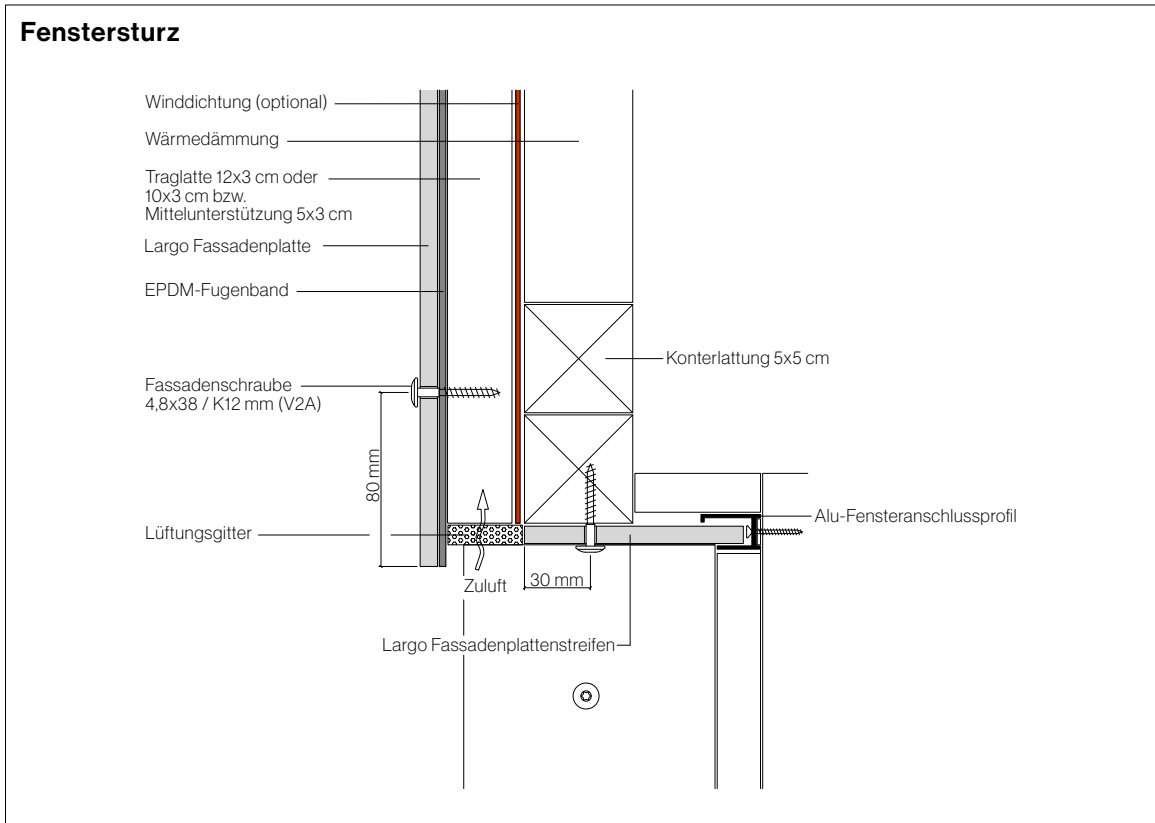






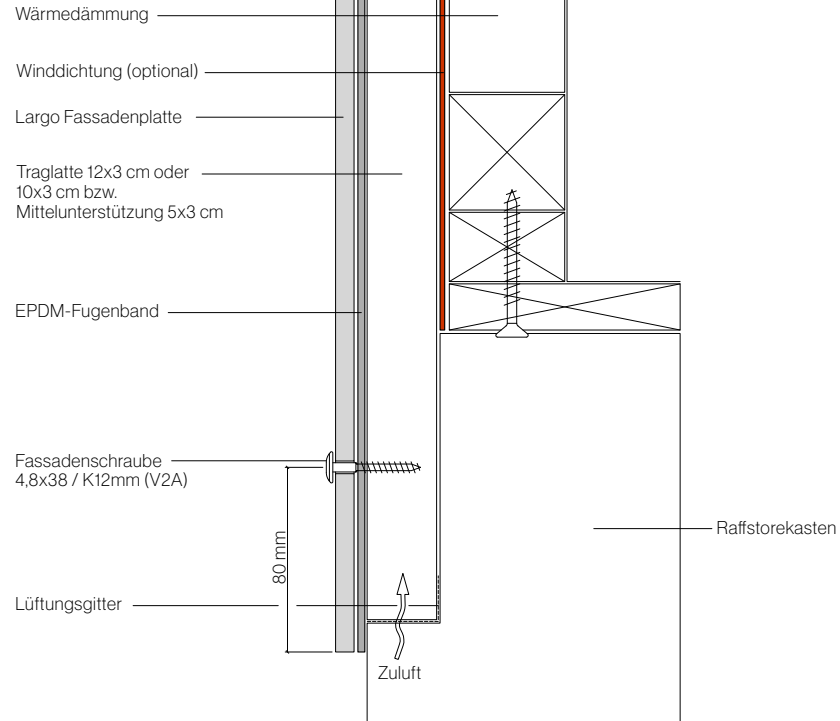
### Fensterleibung mit Blech

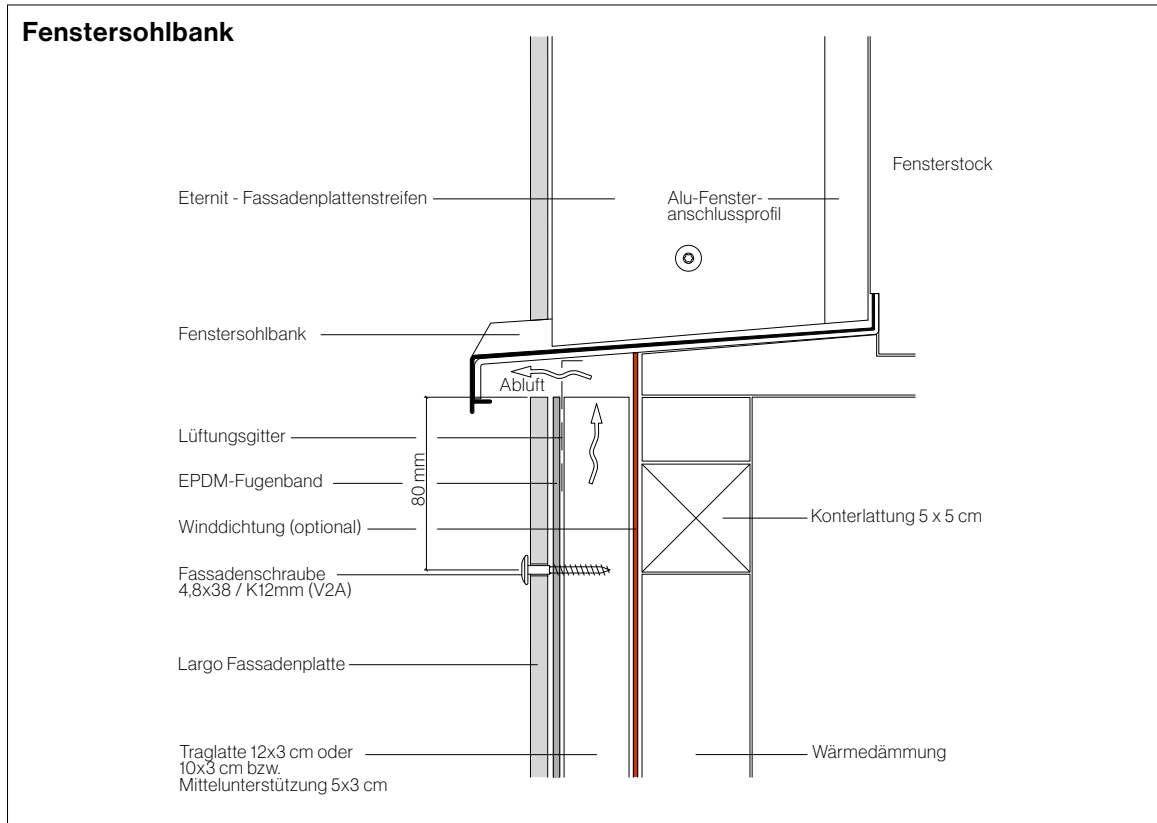






### Fenstersturz mit Raffstore







### Horizontalfuge mit Alu-L-Profil

Largo Fassadenplatte

Alu-Wandwinkelstütze

Ende Kleberaube  
und Ende Doppelklebeband

Alu L-Profil

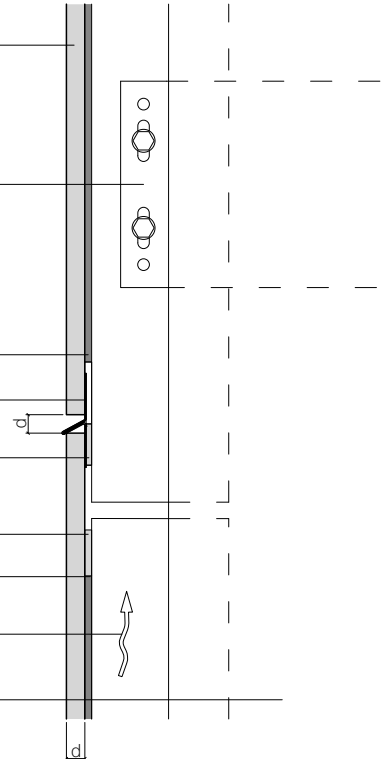
Doppelklebeband zum  
fixieren des L-Profiles

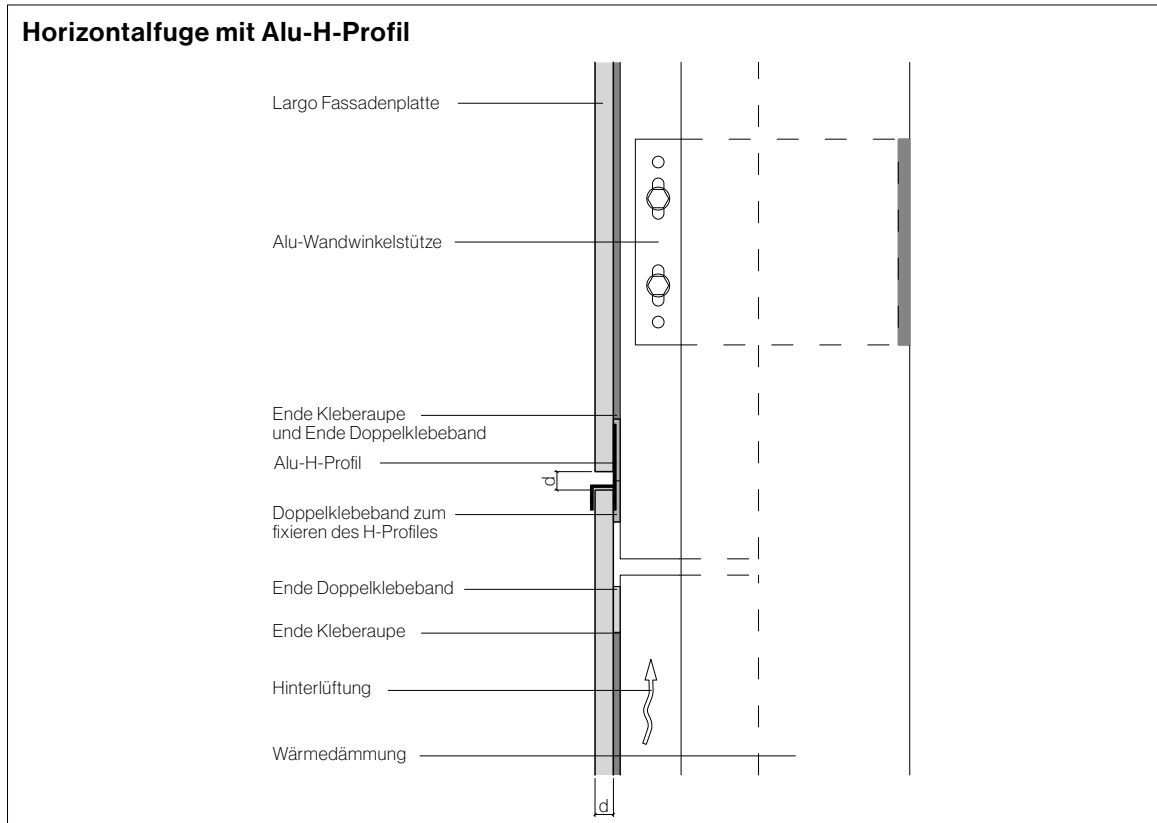
Ende Doppelklebeband

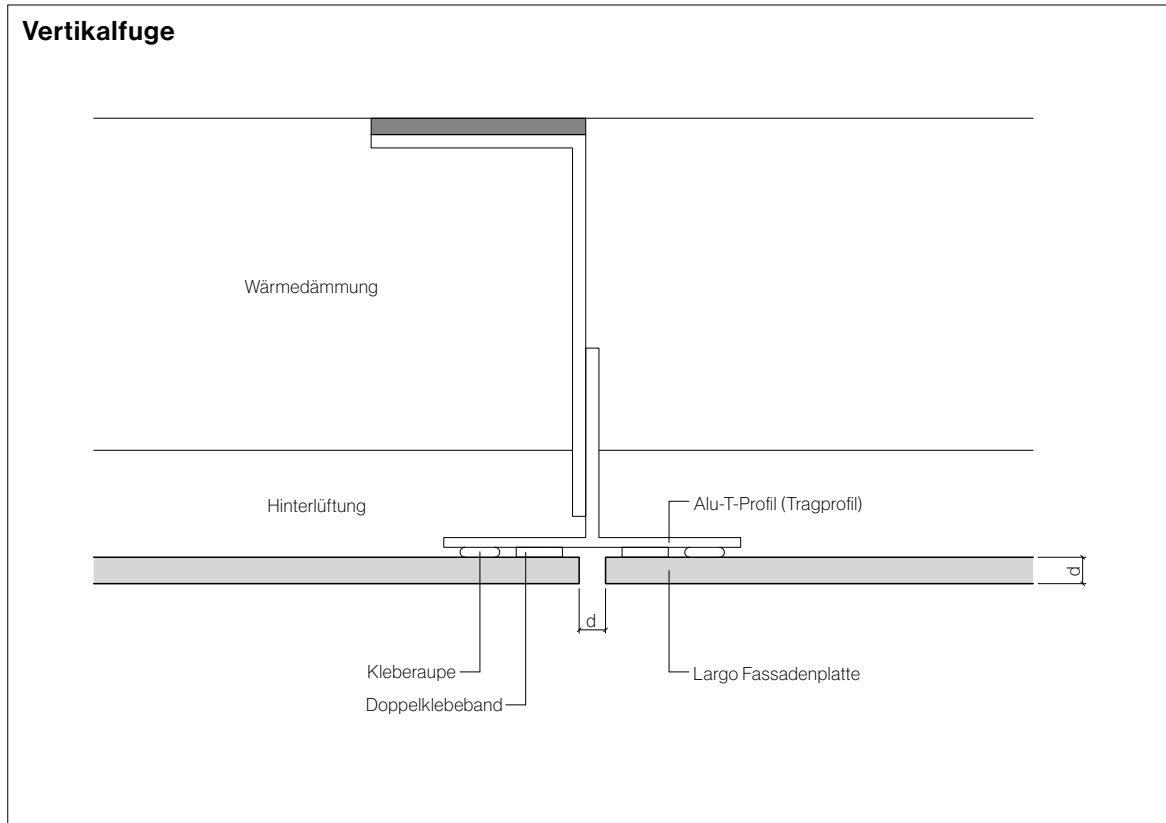
Ende Kleberaube

Hinterlüftung

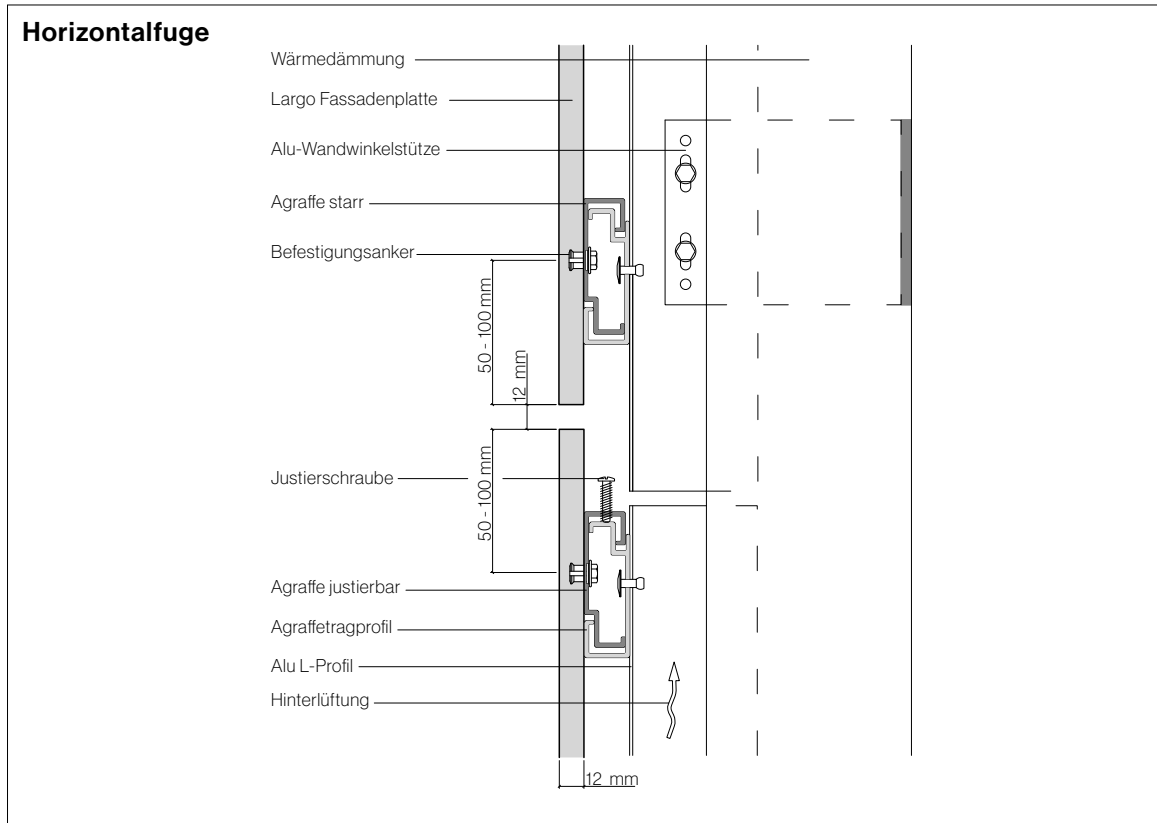
Wärmedämmung

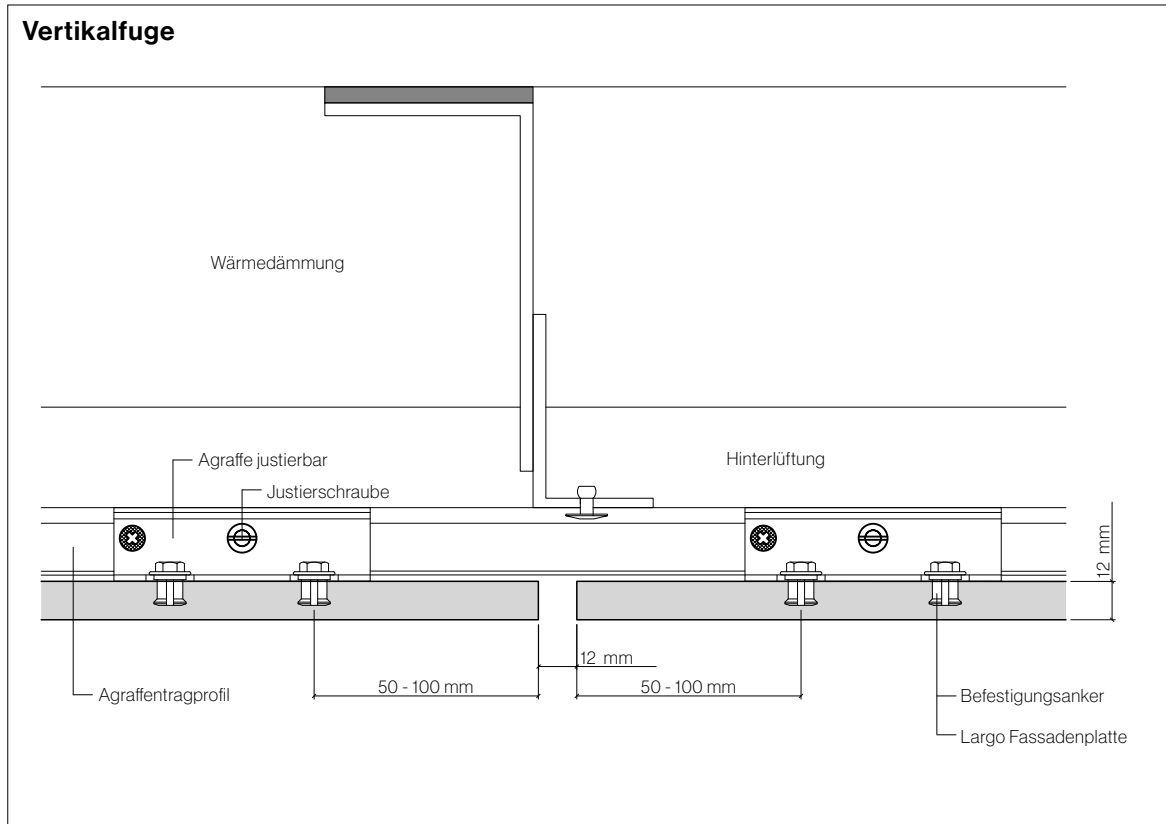


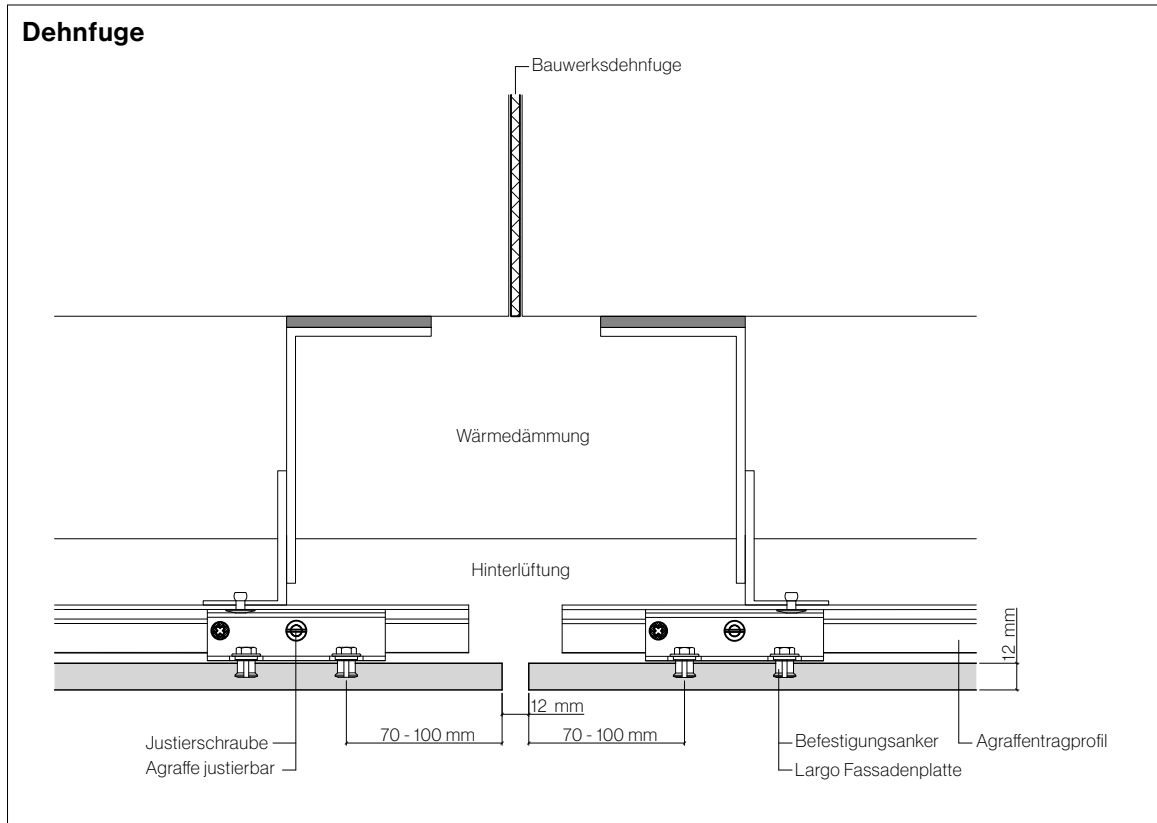


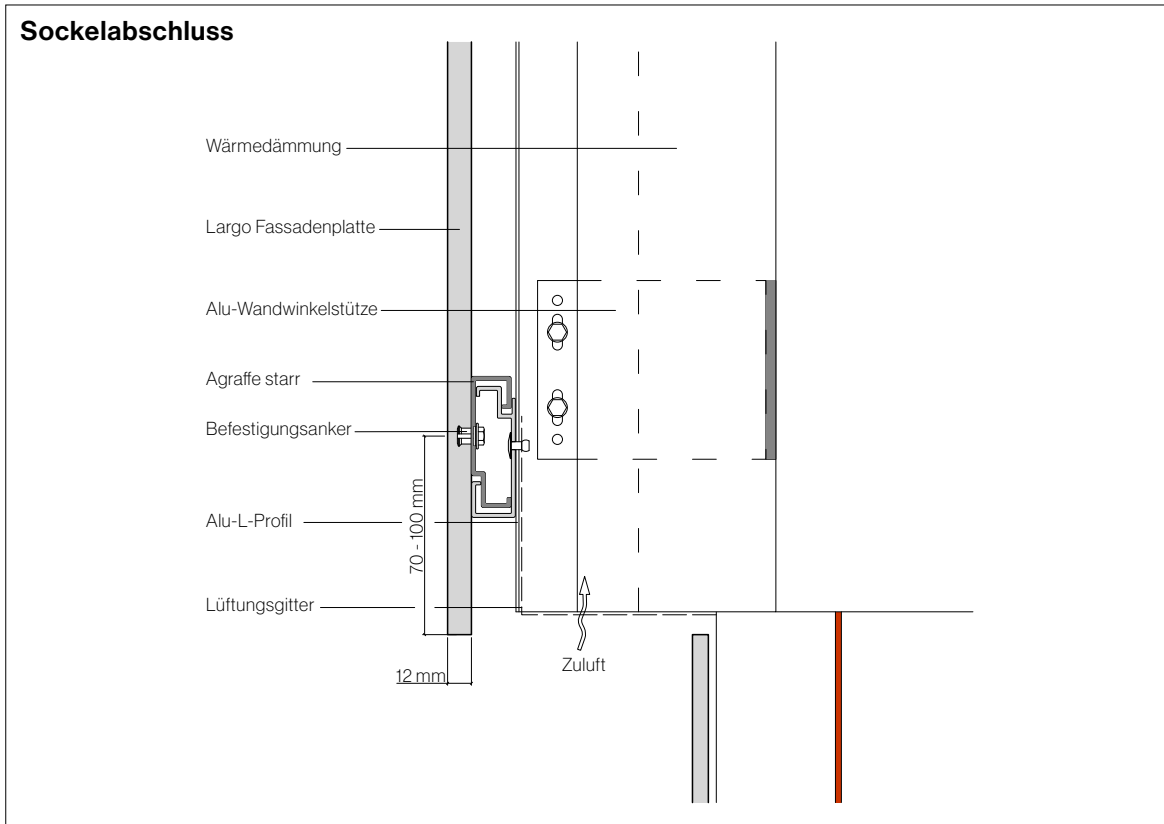


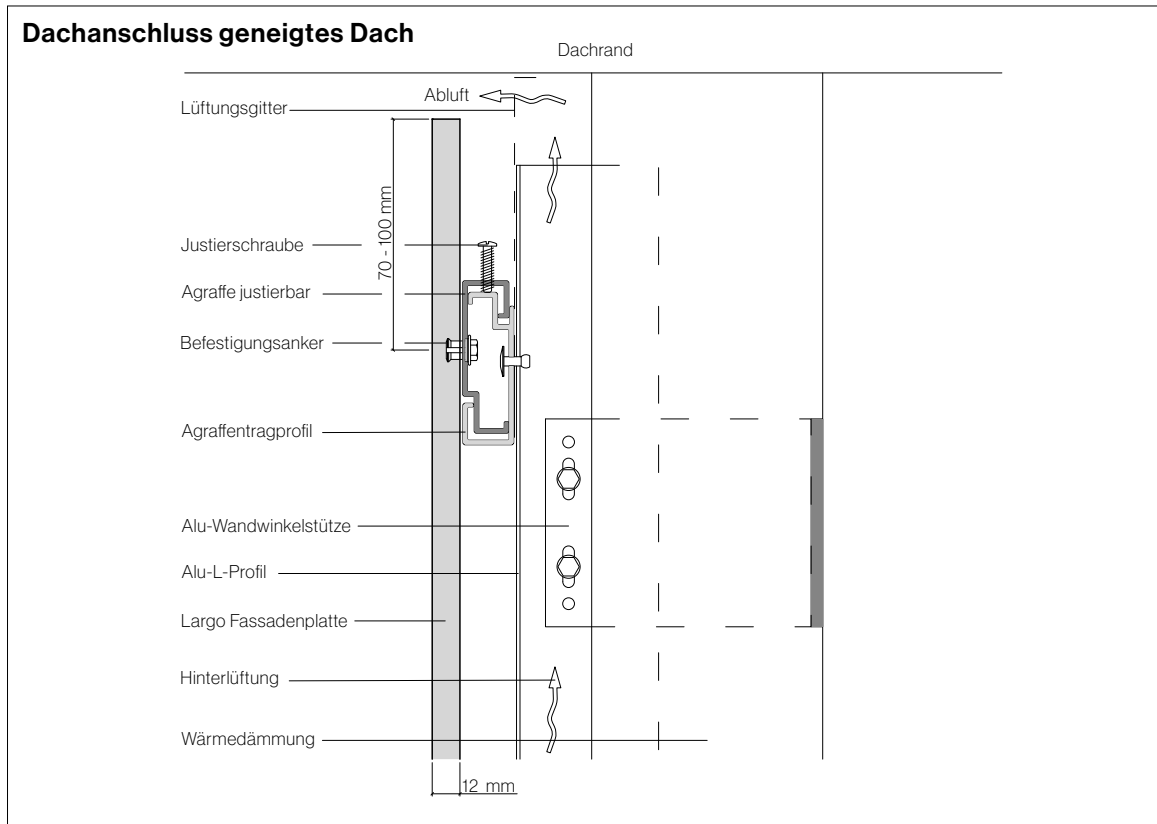






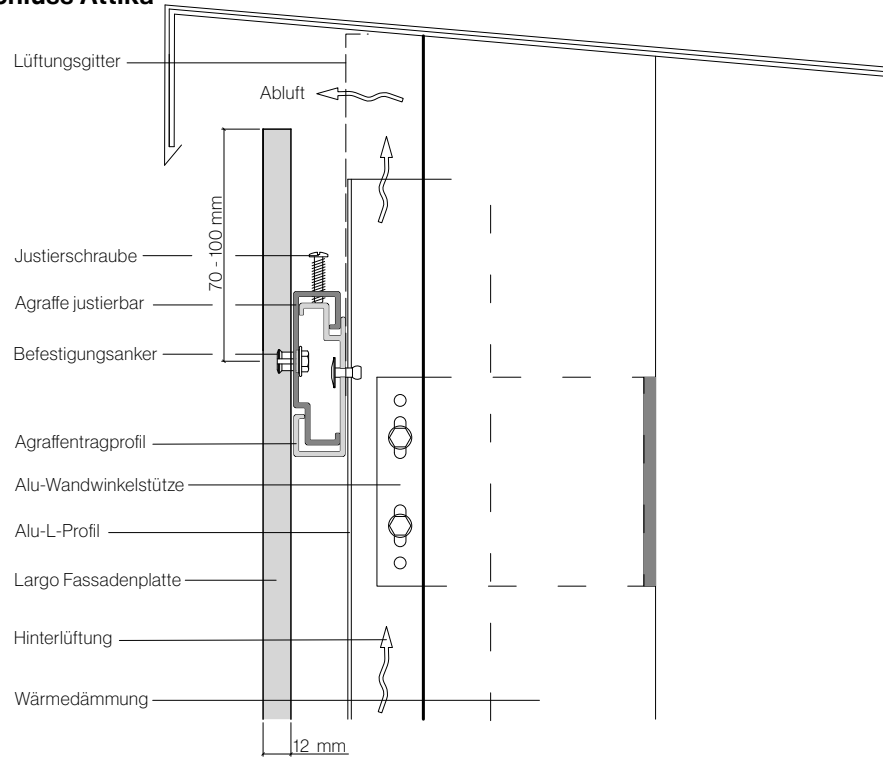




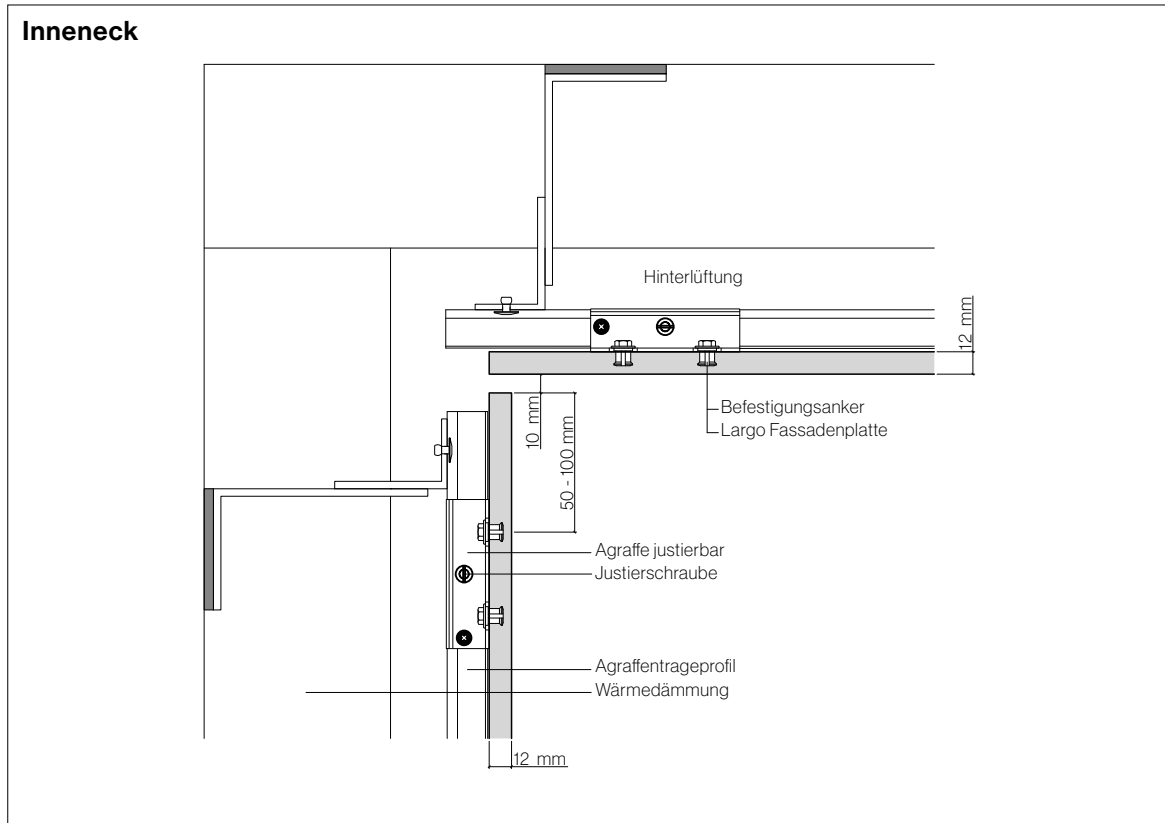




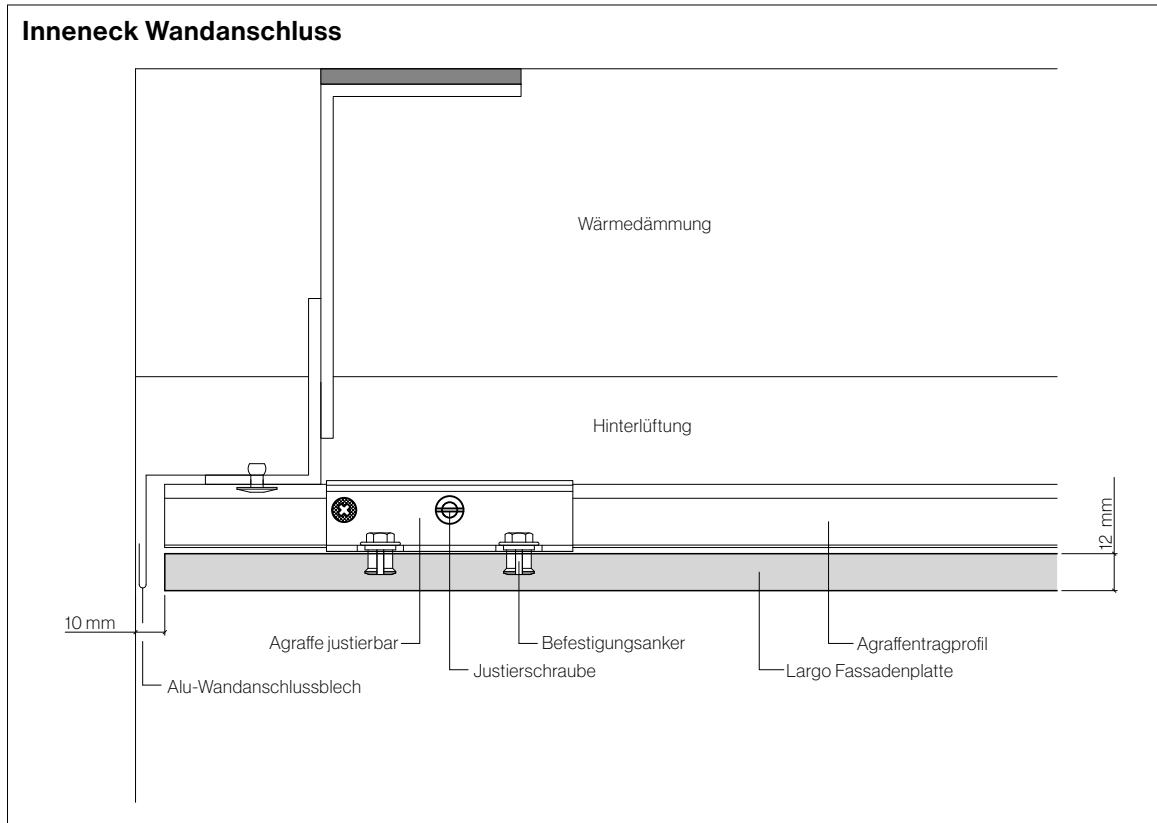
### Dachanschluss Attika

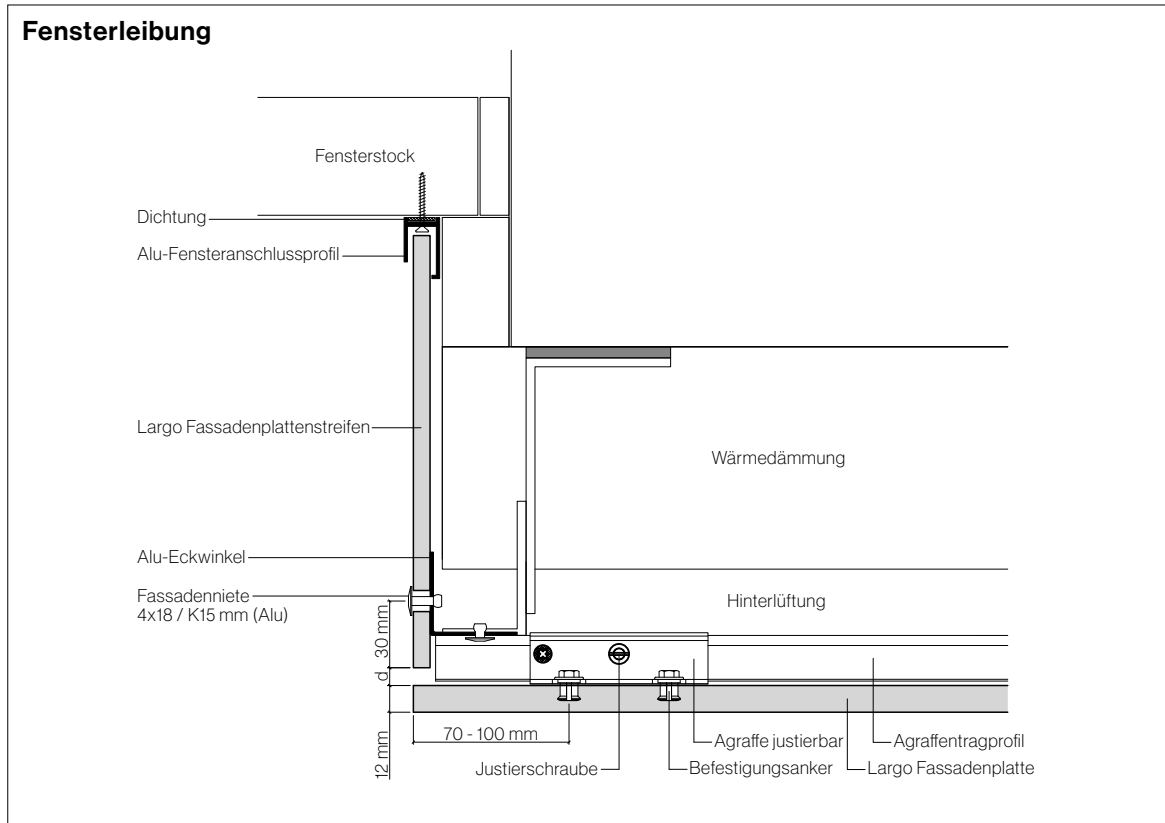


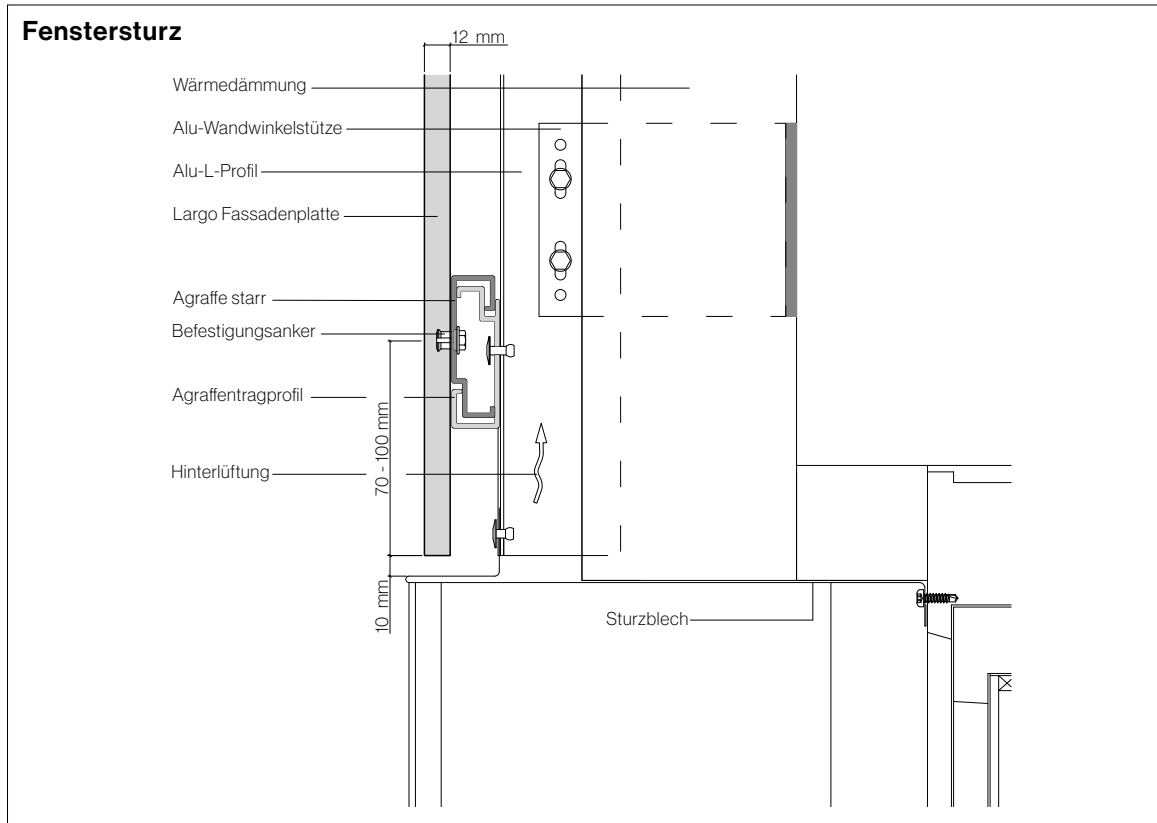






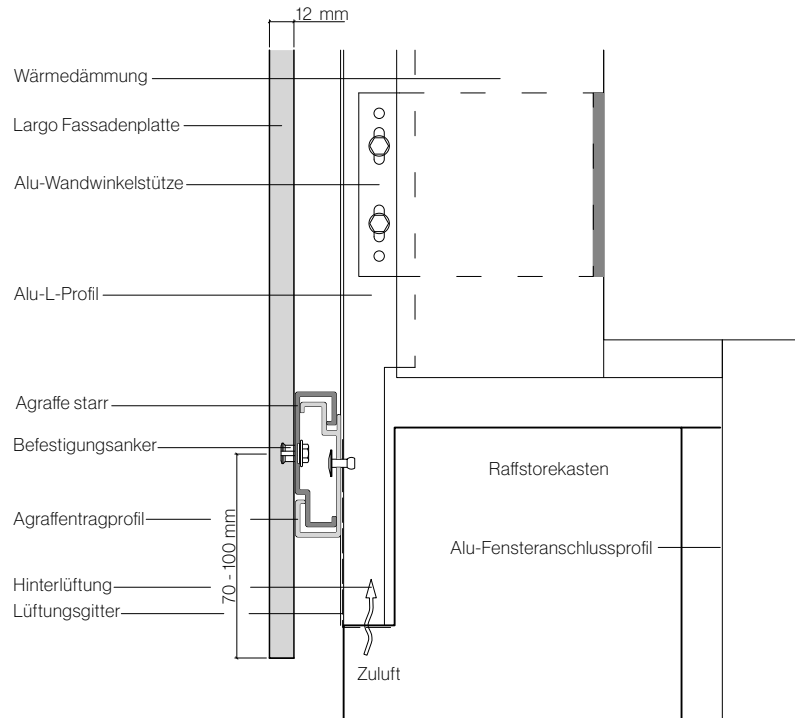


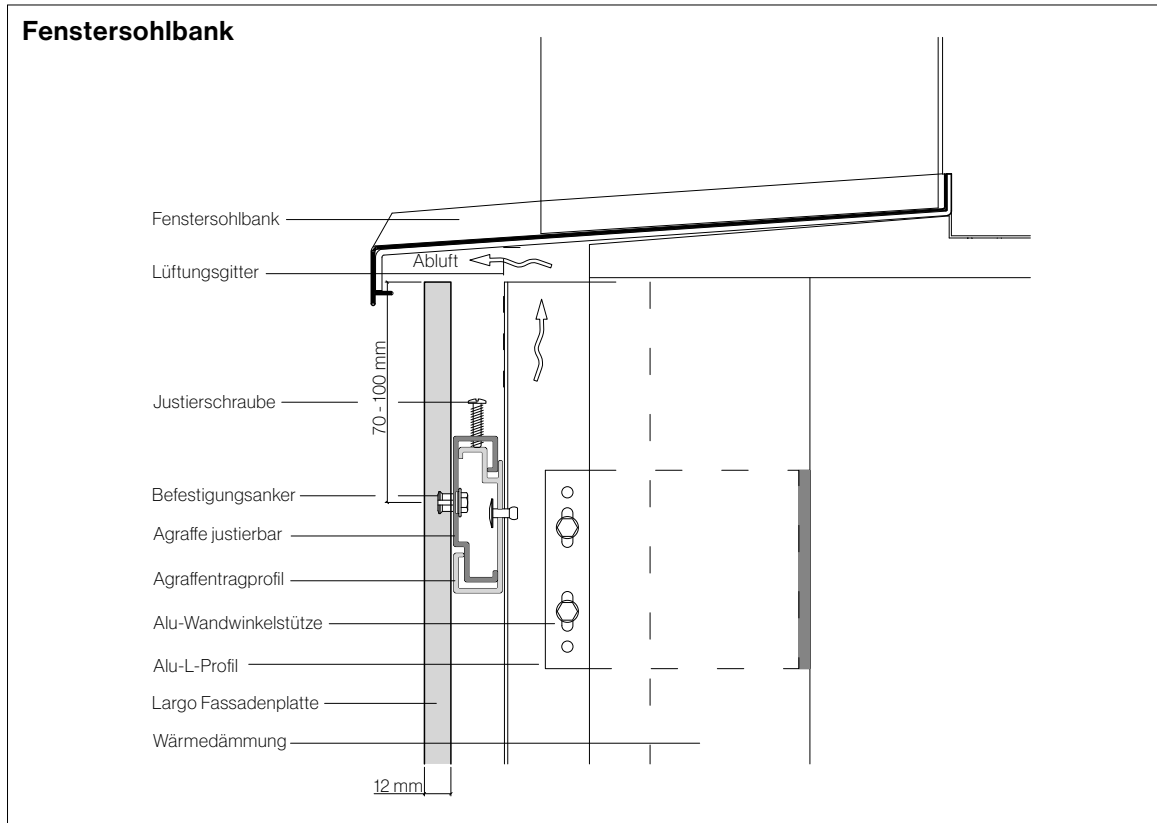






### Fenstersturz mit Raffstore





**SWISSPEARL**

[www.swisspearl.com](http://www.swisspearl.com)