

DIM Design & Installation Manual Island

Facade on Aluminium – Swisspearl Patina Design Line





Table of Contents

Swisspearl	4
The Self-ventilating Facade	6
Product Range	8
Installation	10
Profiles	24
Accessories	28
Storing and Handling	31
Care and Maintenance	32
Health and Safety	34
Onsite Handling	35

Swisspearl

Swisspearl

Swisspearl is one of the leading European manufacturers of multi-capability fibre cement building products. Our products and solutions add exciting new design opportunities for moulding attractive, durable settings for people's lives. But Swisspearl is more than mere products. We also help make all kinds of design and construction projects easier as well as more profitable, inspiring and effective. And for us, all construction also involves building relations with people, making your day better, and helping you make the day better for others.

Product Information

Swisspearl fibre cement is a modern building material made from natural and environmentally friendly raw materials. The technology has been developed by Swisspearl, having more than 90 years of experience within the manufacture of fibre cement. Our wide experience ensures a sustainable product which has accumulated all the advantages of fibre cement. The facade range can be used in all self-ventilated light weight facade constructions. Featuring properties such as non-combustibility, sound and weather insulation as well as high impact strength, Swisspearl fibre cement boards are the ideal facade material.

Quality

Swisspearl product specifications and classifications comply with EN 12467:2012 and 13501-1:2007+ A1:2009

The facade range

- is manufactured in accordance with the quality management system ISO 9001:2015
- complies with the provisions set out in the Construction Products Regulation (EU) No. 305/2011

20 years Swisspearl Warranty

Swisspearl Facade Products are covered by a 20-year Swisspearl Warranty, provided that this installation guide is followed. You should

Note!

The following limitations exist for the Swisspearl Patina design line

Do not use the following facade constructions: Sloped facade with deviation over 5 degrees from vertical, curved facade or non ventilated facade.

Disclaimer

The information and recommendations contained in this Design & Installation Manual ("DIM") are offered as a service to architects, constructors, installer and other persons involved with our products and are not intended to relieve them from their own responsibility. The information and recommendations provided herein are believed by Swisspearl Group to be accurate at the time of preparation of this DIM, or obtained from sources believed to be generally reliable. Swisspearl Group makes no warranty concerning the accuracy of the content of this DIM and shall not be liable for claims relating to any use regardless of whether it is claimed that the information or recommendations are inaccurate, incomplete, or otherwise misleading. The information and recommendations herein are intended to be used with the judgment and experience of professional personnel competent to evaluate the significance and limitations of the material contained. Swisspearl Group expressly disclaims any guarantees or warranties, expressed or implied, for anything described or illustrated herein and assumes no responsibility or liability for damages of any kind, including – without limitation – bodily harm, injury or damage to property inferred from this DIM or the use of the materials described herein.



The self-ventilating facade

A self-ventilating facade is a construction which helps minimise temperature variations in the wall throughout the year. Sunlight and heat are reflected away in the summertime, and insulation behind the facade boards reduces heat loss in lower temperatures.

At the same time, the natural ventilation passing through the construction minimises condensation.

The self-ventilating facade has additional features and benefits.

The most important benefit is the protection of the underlying construction against weather, wind and moisture. Some moisture passes through the facade, but it is limited to a level that can either be drained away or eliminated by natural ventilation.

The drainage feature of the system works when rainwater or moisture penetrates through the gaps in the facade. The moisture runs down either the reverse of the facade boards, the windstopper, or the insulation. There should be ventilation openings at the base of the structure and above doors and windows. These openings will also help drain the water away from the construction.

The natural ventilation works by means of a chimney effect. The air enters at the bottom of the structure and on its way up through the facade takes moisture-laden air through the ventilation openings at the top of the structure or at window or door openings.

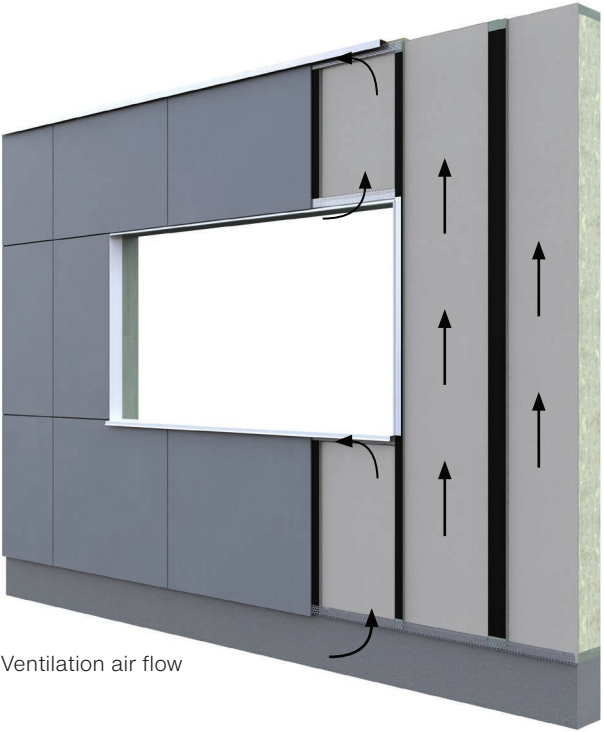
The boards can be installed with open horizontal joints or with joint profiles. Horizontal joints between boards contribute minimally to natural ventilation and therefore profiles can be used in these joints, if required.

Swisspearl recommends increasing the ventilation area behind the facade boards when installing facade boards on taller buildings. In the table below, it is showing the recommended minimum ventilation cavities behind the facade boards.

Cladding height	min. gravity
<6 m	20 mm
6-30 m	30 mm
>30 m	40 mm

Aluminium construction on heavy wall

- 1. Swisspearl facade board
- 2. Flat EPDM optional
- 3. T or L profile
- 4. Bracket /insulator
- 5. Insulation
- 6. Ventilated area minimum 20mm
- 7. Back wall



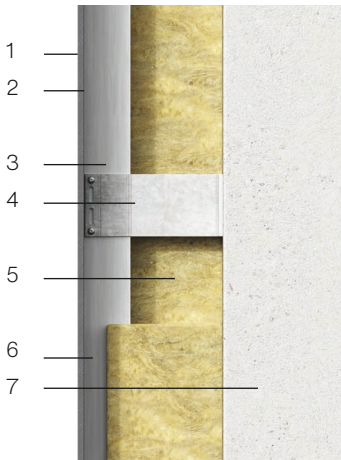
Ventilation air flow



Open joints

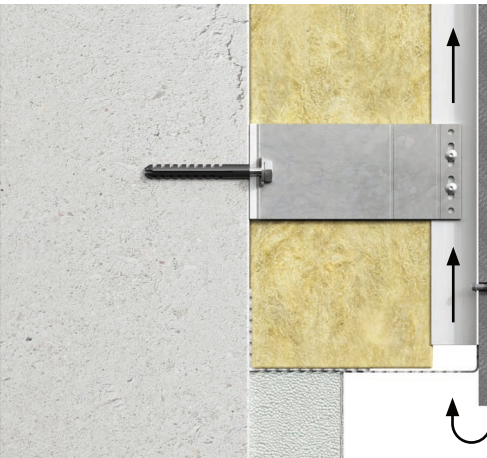


Joint profile



The self-ventilating facade

Ventilated Openings



Air is drawn into the construction through an opening at the base of the facade, and it must be ensured that unobstructed ventilation is possible throughout the height of the facade. There should be a minimum ventilation gap of 20mm, or an equivalent of 200cm² per meter. If perforated profiles are utilized, a ventilation area opening of at least 60% of the ventilation gaps area is required. The opening at the base also serves to drain moisture that has entered the facade.



The airflow must be maintained at the top of the facade, whether it abuts to a roof or another structure. Similar to the requirements at the base, there should be a minimum ventilation gap of 20mm or 200cm² per meter.



A horizontal ventilation opening of at least 20mm or equivalent to 200cm² per meter should be maintained beneath windows or other openings where a sill is employed. Typically, this ventilation gap is created between the top edge of the facade boards and the bottom edge of the sill. It is advisable for the sill to extend a minimum of 30mm beyond the front of the facade to prevent water from the sill from entering the structure.

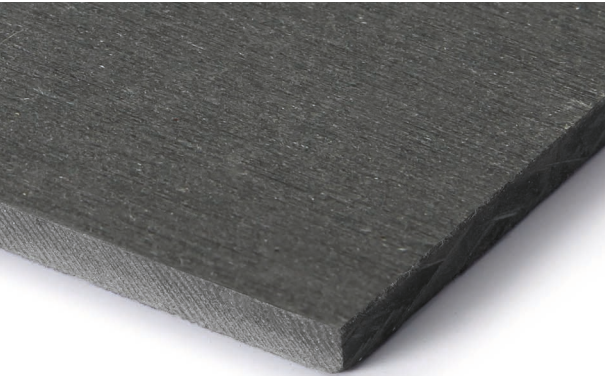


A horizontal free ventilation opening must be maintained above windows and doors. This ventilation gap should be at least 20mm wide. If perforated profiles are employed, a ventilation area opening comprising at least 60% of the total ventilation area is necessary. Additionally, the opening at the base serves to drain moisture that has entered the facade.

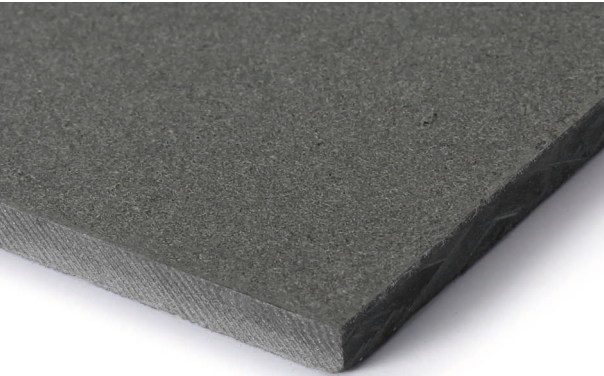
Product Range

The Swisspearl Patina design line

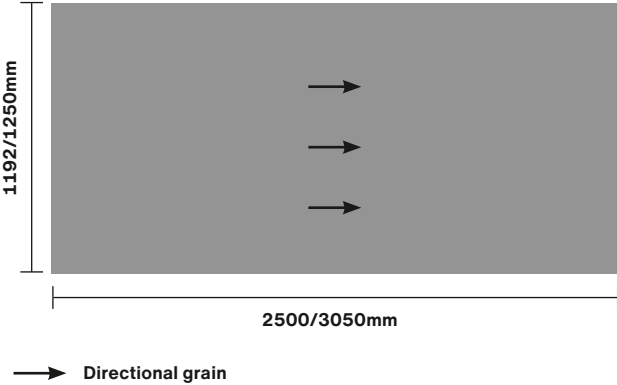
Swisspearl Patina Original



Swisspearl Patina Rough



Swisspearl Patina Inline



Directional grain
Swisspearl Patina’s manufacturing process gives the boards a unique surface texture. This unique finish is enhanced by a process which adds a directional grain to the board - leaving the boards with a different appearance dependent on lighting and the angle of the board.

By rotating boards within the facade makes it possible to obtain a playful visual effect - depending on the viewer’s position and the lighting conditions.

Quick facts	Type	Fire class	Thickness	Dimensions	Weight/m²
Swisspearl Patina Original Swisspearl Patina Rough	Through coloured	A2,s1-d0	8mm	1192x2500mm 1192x3050mm	12.1kg/m²
Swisspearl Patina Inline	Through coloured	A2,s1-d0	9.5mm	1192x2500mm 1192x3050mm	14.1 kg/m²



Installation

Aluminium substructure



Swisspearl facade boards can be mounted on many different types of support systems.

This manual deals with the installation of Swisspearl facade boards on an aluminium system.

Typically, an aluminium system for fibre cement consists of 'T' profiles at the joints and L profiles as centre profiles. These are vertically mounted on the load-bearing wall using brackets. Insulation is mounted between the profiles on the load-bearing wall. This is the system shown in this installation manual.

Swisspearl do not recommend specific systems as there are many suitable suppliers and types of systems on the markets. The system specified should always be selected to suit the type of project as well as being suitable for supporting fibre cement. Contact the Swisspearl office in your area for advice on which types that are available in you local market.

Fixing the support system

Securing the support system to the load-bearing wall must comply with all local standards and regulations as well as follow the manufacturers' recommendations.

Before installing on a load-bearing wall, the installer should check to ensure that wall is flat and true and that the support system can be mounted safely.Choose the correct fixing system for the load-bearing wall type and material.

The support system and fixings should have the appropriate levels of corrosion resistance for the local environment. Wind load calculations for the facade structure should also be considered and carried out. These calculations will normally be done by a project/construction engineer.

The numbers of brackets, the fixing method, depth and frequency to the load-bearing wall, and the thickness of the aluminium for the support system should be calculated by the manufacturer or by a specialist engineer.

Support system aluminium performance

Ensure that the performance of the support system used complies with country specific standards and regulations.

When installing on aluminium systems, use rivets to fix the facade boards to the T and L profiles. Swisspearl recommends that the aluminium is of minimum 2mm thickness. Maximum aluminium profile length is 3000mm.

Installation

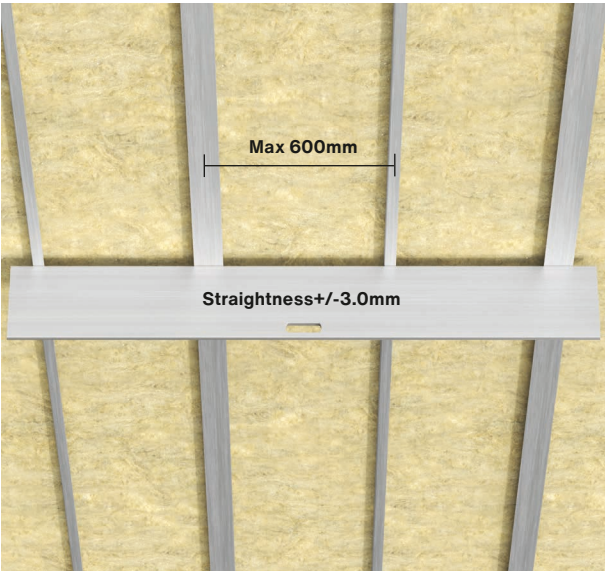
Aluminium substructure

To ensure the optimum, long term performance and aesthetic characteristics for Swisspearl facade boards it is vital to ensure that the support system substructure is absolutely straight, horizontally and vertically. In order to ensure this, please follow the guidelines below.

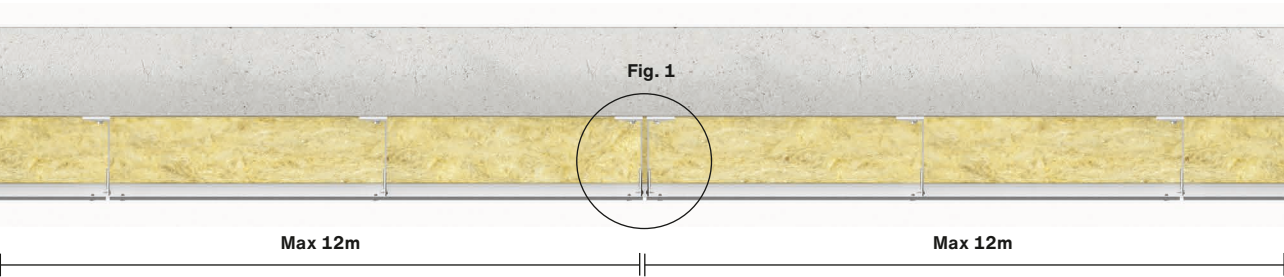
Straightness of substructure

The horizontal tolerance is +/- 3.0mm measured over a distance of 2 meters.

The vertical tolerance is +/- 0.5mm over 600mm measured over a distance of 2 meters.



Straightness of substructure



Movement joints

When installing Swisspearl facade boards using aluminium support systems over a large area, the movement of the facade boards and the support system must be taken into account.

Instead of using a T profile at joints, use two L profiles to create a movement joint. This ensures that the two cladding sections can move separately. These joints should be included every 12 meters maximum.

The movement joint gap (between the two cladding sections) should be minimum 8mm.

Fig. 1



Installation

Aluminium frame fixing and sliding points



Red brackets are the brackets with fixing points (F)

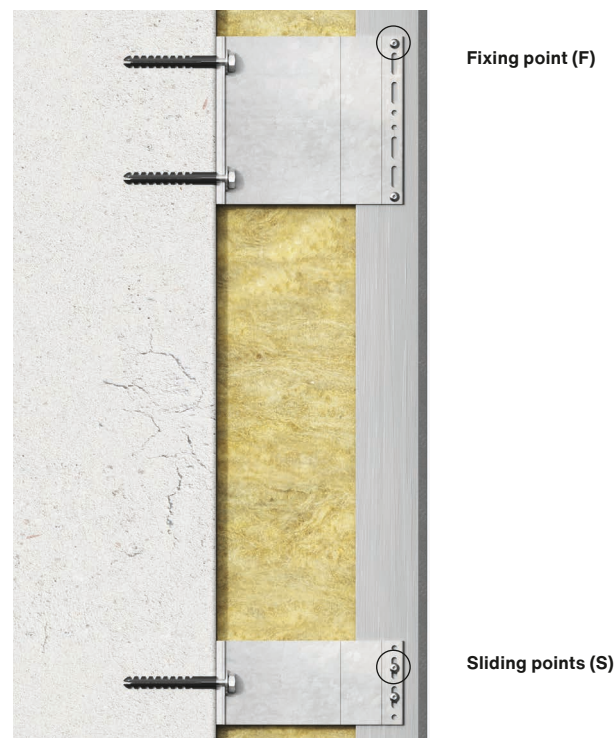
Aluminium support system fixing and sliding points

Since the aluminium will expand or contract according to climatic conditions, the T and L profiles should be secured to a 'fixed' bracket.

The remaining brackets should be fixed using the sliding point. This allows the vertical profiles to move up and down as the aluminium expands or contracts.

The fixed bracket should be placed as close to the centre of the T or L profiles as possible so the profiles can move in both directions. The example shown above illustrates a construction where the fixed bracket position is generally in the middle. Only when there are 2 brackets, the fixed bracket should be the top one - so that the profiles can only move from the top downwards.

The example shown above illustrates a construction where the fixed bracket position is in the middle.



Installation

Aluminium substructure

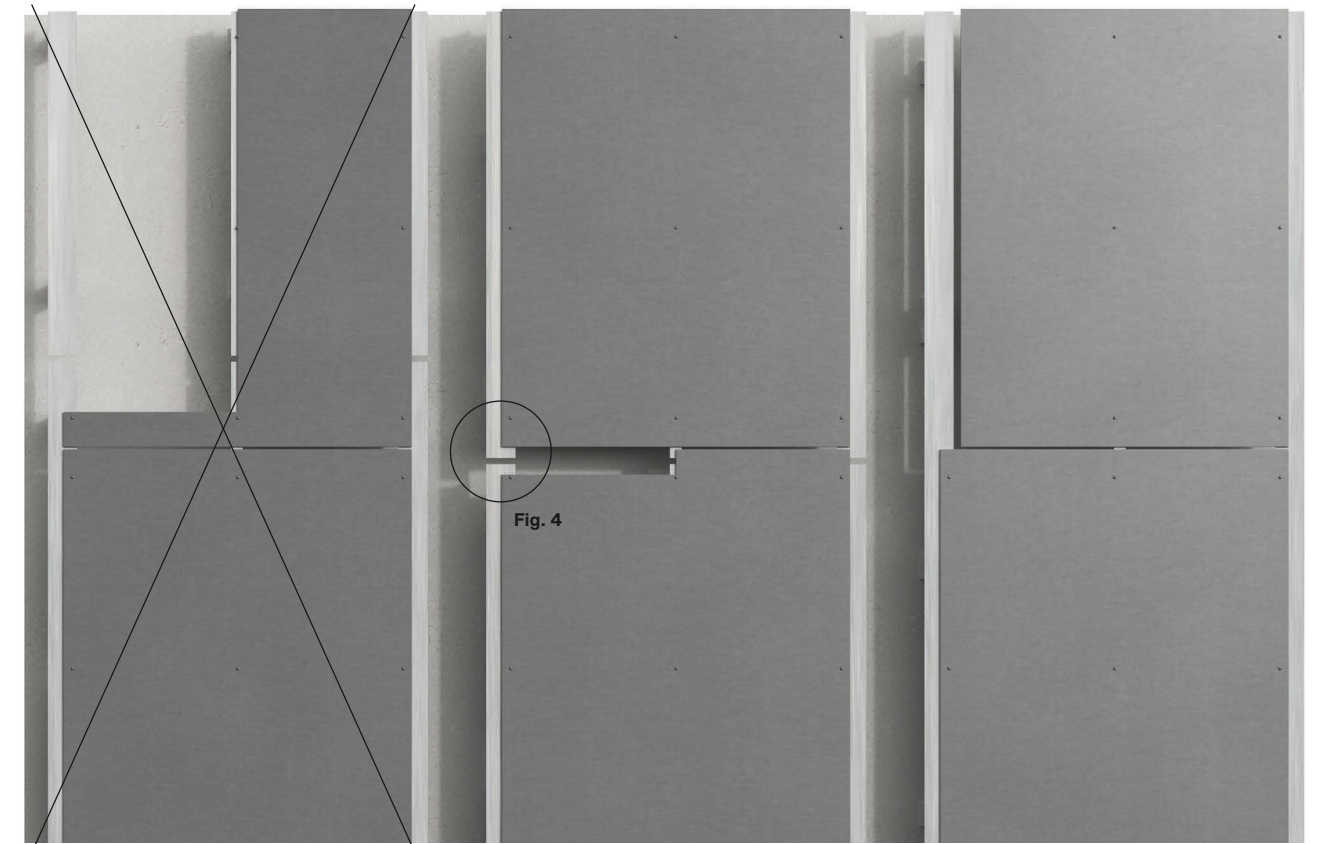


Fig. 1

Fig. 2

Fig. 3

Correct installation of the aluminium support system

Never install Swisspearl facade boards spanning over two or more aluminium profiles lengthwise, as movement of the aluminium and the facade boards caused by moisture and temperature changes potentially could damage the boards (fig. 1).

Swisspearl facade boards can either be installed to match the module length of the support system profiles (fig. 2), or smaller format boards can be installed so that several boards span the same profile (fig. 3), provided that facade boards are not fixed to two separate support profiles.

Ensure a minimum 20mm gap between the aluminium profiles (fig. 4)

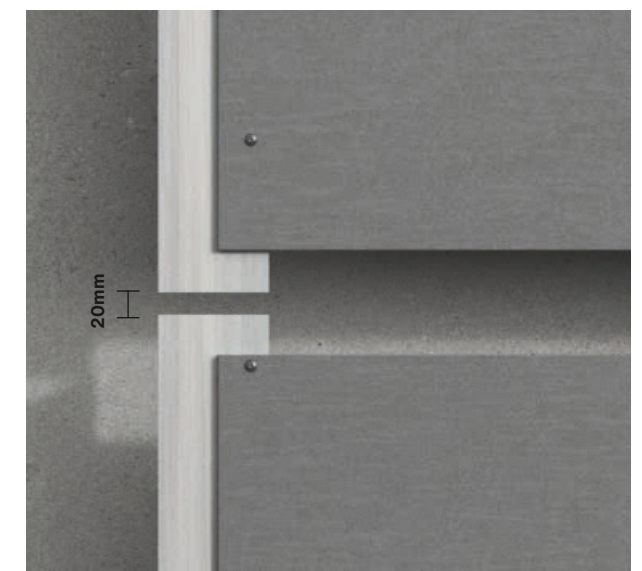


Fig. 4

Installation

Edge Distances

Edge Distances
Distances from the reverse facade board to the front of the insulation of depends on the height of the building, see page 6 for more information.

T profiles behind joints should be min 100mm width, and the L profiles should be min 40mm width.

Joint gaps between boards should be 8mm.

The use of flat EPDM on aluminium profiles is optional, but from an aesthetic point of view, it may be advantageous to use it as the aluminium profiles will otherwise be visible through the joints. Alternatively, you can use black UV tape or painted aluminium profiles.

Swisspearl facade boards can also be installed on horizontal aluminium systems. When using a horizontal support system, there must be a ventilation area corresponding to the building height, see page 6, between the profiles and the supporting wall or insulation.

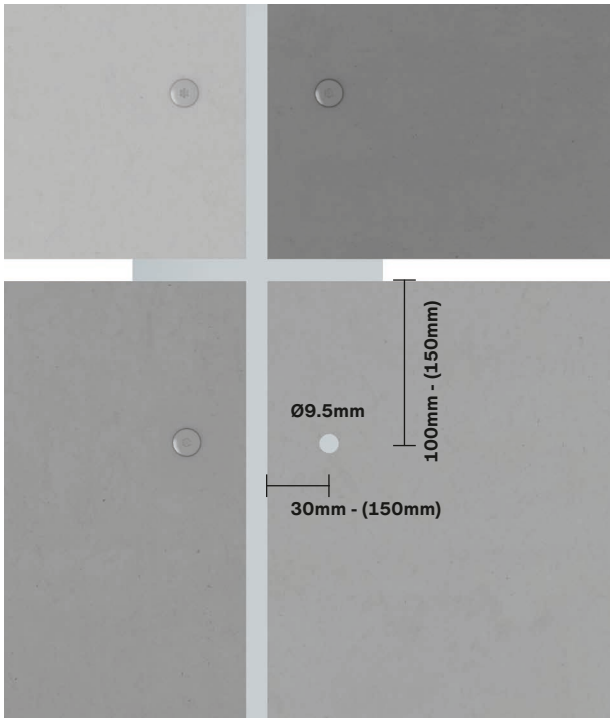
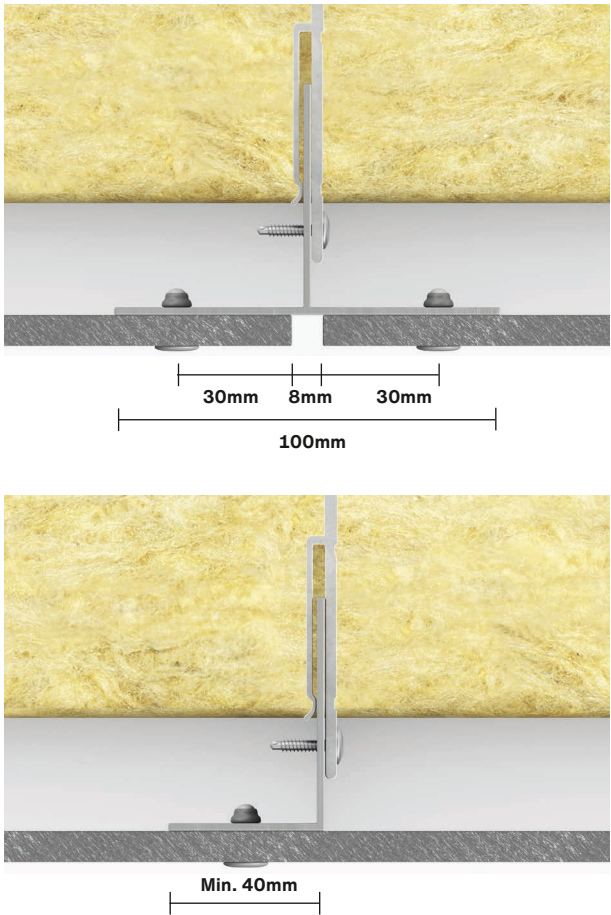
To ensure that boards are able to accommodate movement without damage, please adhere to the following Swisspearl guidelines for correct fixing centres and hole sizes.

When installing Swisspearl facade boards on an aluminium support system, ensure the following requirements are met. Rivet holes should be pre-drilled using a 9.5 mm drill bit (for fibre cement).

The position of the corner hole is dependent on the direction of the support system.

Fixing distances from the board edge, in the direction of the support system, should be minimum 100mm up to max 150mm. Fixing distances from board side edges should be min 30mm and max 150mm.

The illustrations show a vertical support system. If using horizontal support system, the corner distances should be reversed.



Example of vertical substructure

Installation

Aluminium substructure



Aluminium support system Mounting 8mm Swisspearl facade boards on aluminium

Max. support distances:
600mm o.c.

Max. rivet centres: 600mm

Max wind load: Please refer to the
wind load table for the correct dis-
tances for substructure and rivets.

The following rivet types can be used
for this construction: Swisspearl
Rivets Aluminium RIV-A 4.0x20mm

Installation

Edge distances

Swisspearl Patina Inline
Swisspearl Patina Inline is available in four dimensions:
1192x2500/3050mm
1250x2500/3050mm

Please note that the 1192mm and 1250mm board cannot be combined as the widths of milled lines are slightly different.

Make sure to adhere to the installation principles in this manual when installing Swisspearl Patina Inline. The areas in which the installation of Swisspearl Patina Inline differs from the normal installation method will be explained below. Pre-drill the Swisspearl Patina Inline board using a Ø9.5mm drill suitable for fibre cement.

- Edge distances**
The edge distance of the hole is dependent on the direction of the support system - as the normal installation principles.
- Edge distances from the board end, in the direction of the support system, should be minimum 100mm up to max 150mm
 - The edge distance from the board side edges should be minimum 30mm and max 100mm

If the board is mounted with horizontal lines as in fig. 3* the edge distance should be minimum 100mm, but as the milled lines will not necessarily match the edge distance, it should be placed at the nearest following top line.

If the board is mounted with vertical lines as in fig. 3** the edge distance should be minimum 30mm for full size boards. If cut to size, please refer to the paragraph below. Please note that the screw should always be mounted at the top of a line and centred (fig. 1). The same applies to the installation on central battens (fig. 2).

Edge distance of cut to size boards
If the board is cut to size to be installed in connection with windows, doors or similar, it may not be possible to keep the edge distance at 30mm due to the nature of the lines. It will be necessary to place the screw at the following top instead (fig. 4).

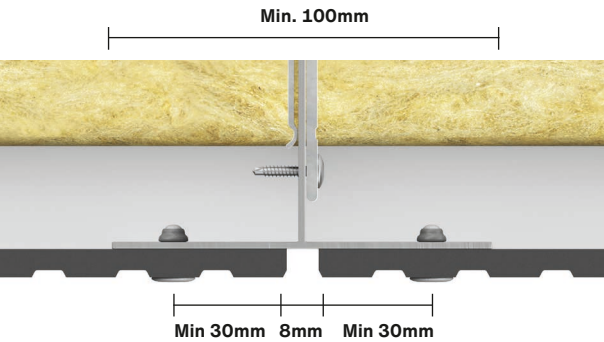


Fig. 1.



Fig. 2. Swisspearl Patina Inline installation on L profile.

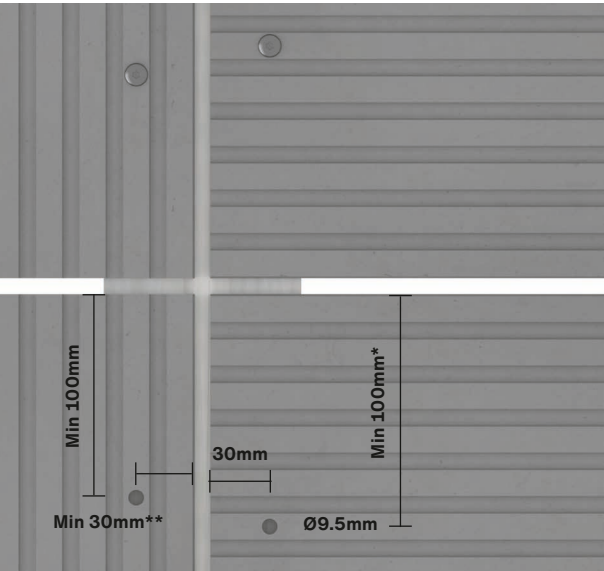


Fig. 3. Swisspearl Patina Inline edge distances.
Note! Min distance and/or the nearest following top line.

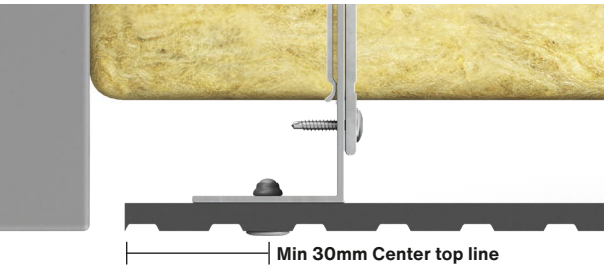


Fig. 4. Swisspearl Patina Inline installation on cut to size board.

Installation

Wind load

When installing Swisspearl facade boards, consideration should be given to the location of the building and which wind load the boards can be exposed to. In the table below, you find the rivet distance as well as the support distances. Combining these two shows how much the board can withstand in kN/m².

It may be necessary to change support spacings/rivet distances at edge zones as the wind loads here may be higher than elsewhere on the building.

Swisspearl Patina design line - characteristic values

Maximum Rivet distances mm	Maximum batten distances mm			
	300	400	600	629
300	12.14 kN/m²	7.95 kN/m²	3.53 kN/m²	3.21 kN/m²
400	9.11 kN/m²	6.83 kN/m²	3.53 kN/m²	3.21 kN/m²
500	7.29 kN/m²	5.47 kN/m²	3.53 kN/m²	3.21 kN/m²
600	6.07 kN/m²	4.55 kN/m²	3.04 kN/m²	2.90 kN/m²

The calculations are based on ETAG 034. No additional safety factors have been added. The test on which the calculations are based is made by an accredited laboratory with Swisspearls Rivets and the substructure used in the manual. The calculations are also based on the following material of the substructure; aluminium of minimum 1.8mm thickness, aluminium alloys as per EN 573, EN 755 and EN 485 (z.B. EN AW 6063 T66)

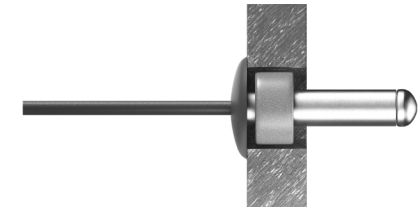
If other types of rivets are used, Swisspearl cannot vouch for the numbers in the chart. For high buildings or buildings located in exposed areas, there may be a need for specific wind load calculations and simulations, in which case you can contact Swisspearl for further information. There may also be situations where additional support and screws are needed in edge zones of the building. The wind load calculation should always be done according to local rules, regulations and the substructure has to be installed correctly as well, so it can withstand the wind load.

Installation

Fixing points for Swisspearl facade boards

To make the installation on aluminium easier, Swisspearl facade boards can be installed using two fixing positions and all other positions should be sliding points. These positions should be as close to the board centre as possible and must be aligned horizontally.

When installing Swisspearl facade boards using rivets, begin with the fixing positions, followed by the sliding points above the fixing positions and finally the sliding points below (see illustration below)



X : Fixing position hole diameter Ø9.5 mm.
Insert a Swisspearl Fixing Sleeve in the hole before the rivet is fixed.

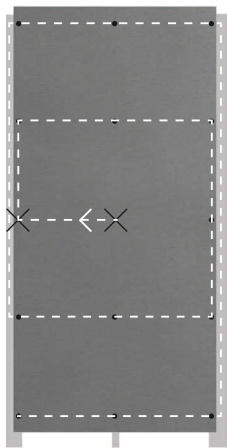
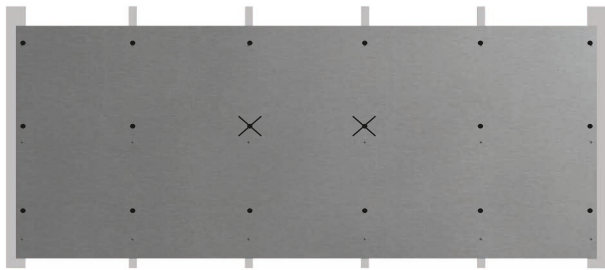
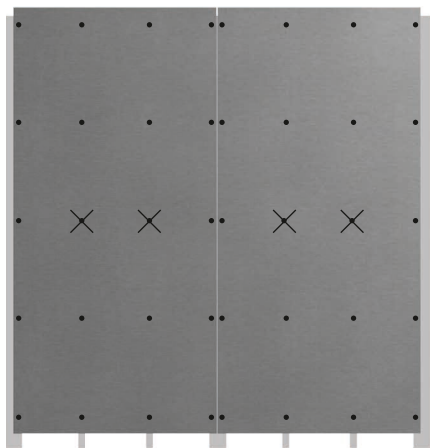


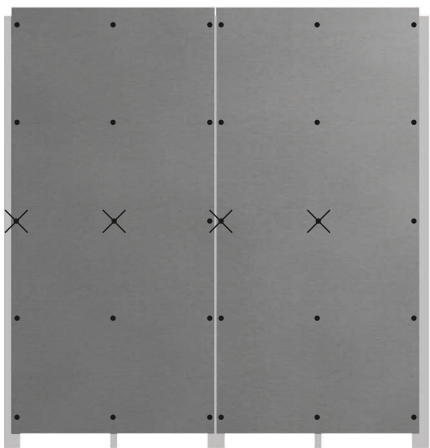
Illustration of correct rivet installation sequence.
1 and 2 are fix points



Example: Horizontally mounted boards with four intermediate aluminium profiles



Example: Vertically mounted boards with two intermediate aluminium profile



Example: Vertically mounted boards with one intermediate aluminium profile

Installation

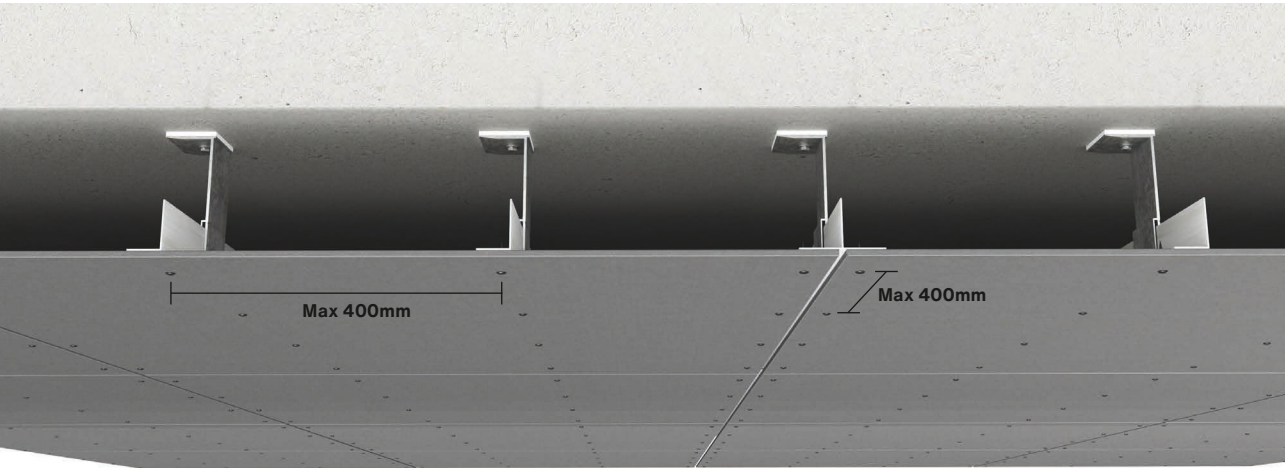
Swisspearl facade boards used as ceiling or soffit

Swisspearl facade boards are ideal for use as ceilings and soffits. The solution can be used for both exterior and interior applications. The boards can be installed on profiles directly mounted to a concrete deck or wooden structure, or they can be used as part of a solution with a suspended ceiling system. It is possible to change or remove the Swisspearl facade boards to access any hidden installations as the boards are mounted using visible rivets.

Installing 8mm Swisspearl facade boards on a aluminium structure - as ceiling or soffit

Max support distances: 400mm o.c
Max rivet centres: 400mm

The edge distances when using Swisspearl facade boards as ceiling or soffit are in principle the same as for facade boards in which the direction of the substructure and the orientation of the board define the edge distances. This also applies to hole sizes, joints and distances to other building materials.



When using Swisspearl facade boards as ceiling or soffit, you can normally use a regular aluminium system with brackets and T and L profiles, but for larger cavities, you need to contact an aluminium manufacturer to make sure the system fits your needs. The number of brackets and types of anchoring used for the type of deck/ceiling has to be calculated, and the manufacturer's instructions should always be followed.

Installation

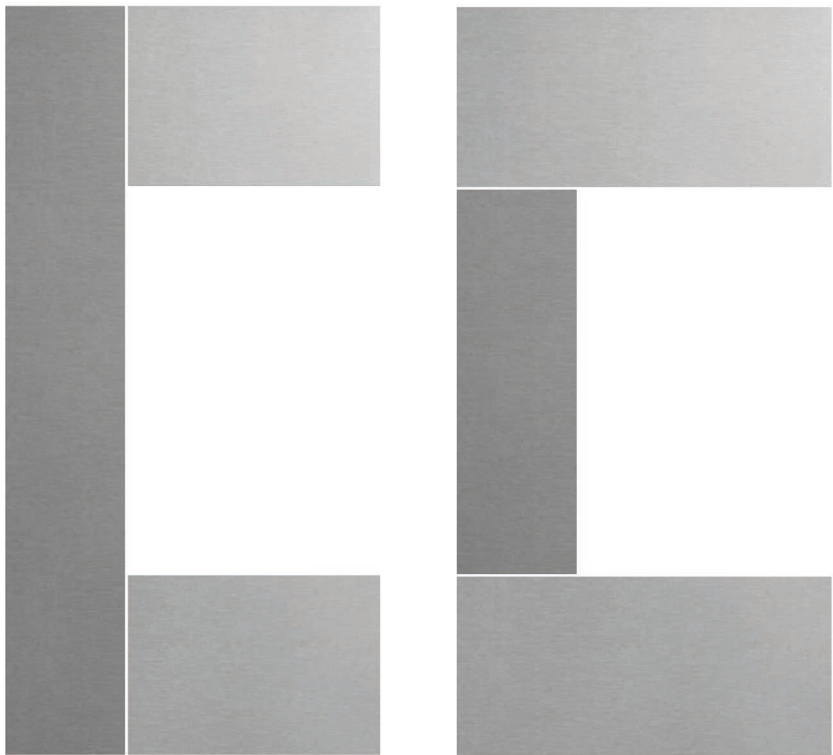
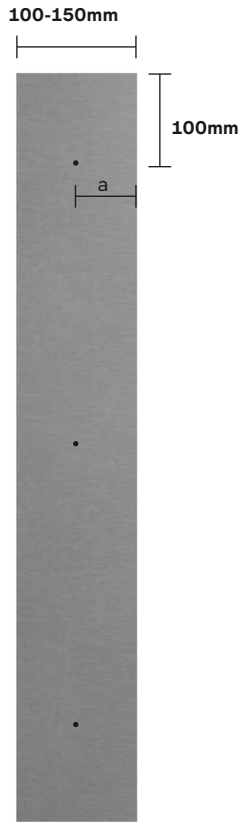
Cut outs

To avoid cracking of the boards, when installing Swisspearl facade boards around windows, doors and other openings, ensure that the facade boards are installed correctly using Swisspearl's instructions.

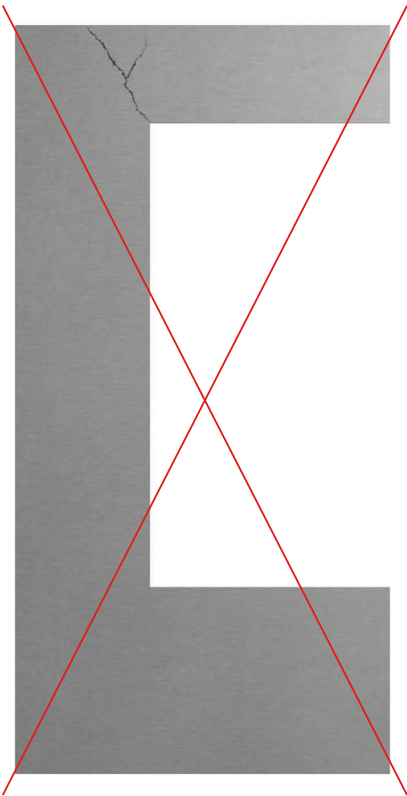
Swisspearl recommends to avoid cutting single, exact apertures in boards, but instead you should cut smaller sections and install them individually.

Cut the boards and make vertical joints of 8mm. Make sure that there is support behind the joints, onto which the facade board can be mounted.

If the small cut outs are not wider than 100-150mm, they can be mounted with only one rivet in the middle of the board (a). This also applies when using the Swisspearl facade boards in other solutions on a building as window jambs or in connection with other narrow spaces.



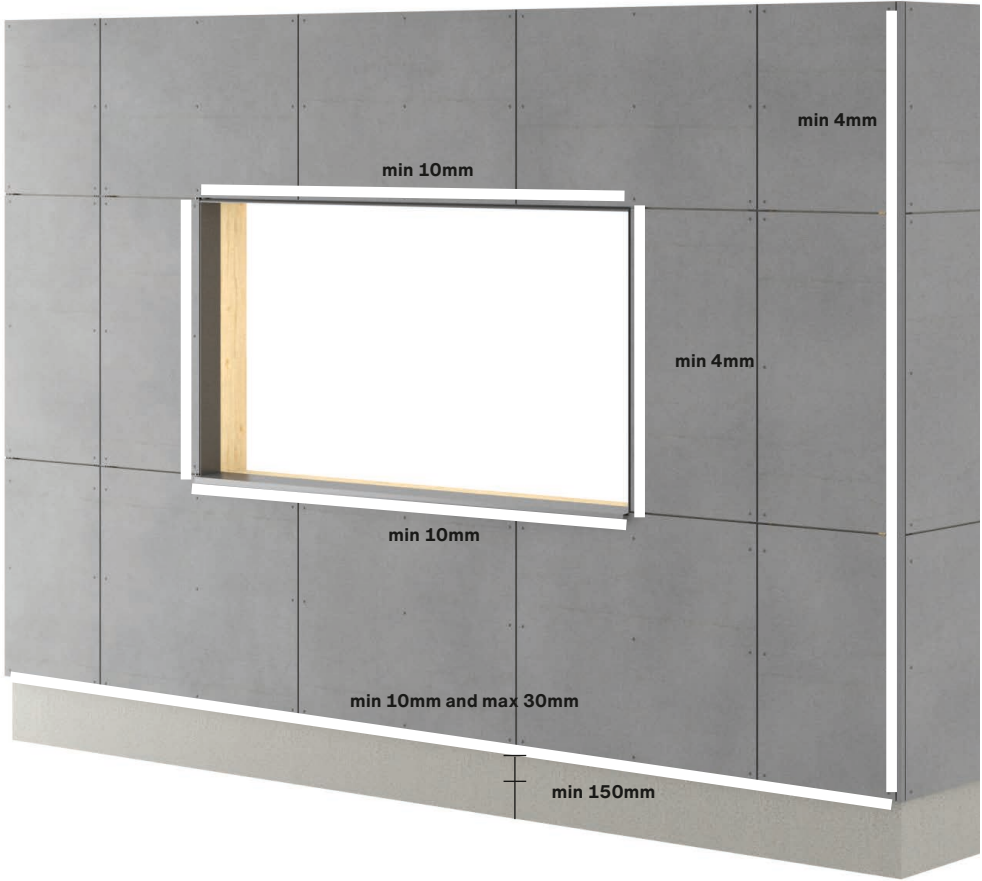
Correct installation of Swisspearl facade boards at windows, doors and openings.



Incorrect installation of Swisspearl facade boards at windows, doors and openings.

Installation

General distances



Make sure to follow the guidelines regarding distances described in this manual.

The facade board should finish between 10 and 30mm below the bottom end of the substructure. For overhang and similar, the maximum distance is 100mm.

The distance to terrain from the bottom edge of the facade board should be a minimum of 150mm. The distance to flat roofs, balconies and other horizontal structures, where the water can drain away, should be a minimum of 50mm.

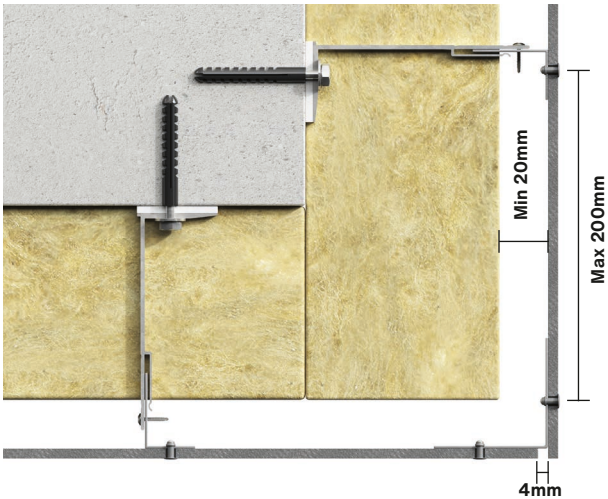
Vertical clearance to profiles such as Swisspearl Alu Trim or Swisspearl Corner profile should be minimum 4mm. For horizontal clearances at windows and doors etc., you must leave a minimum of 10mm for ventilation.

The clearance to other building materials should be minimum 8mm for movement and water drainage.



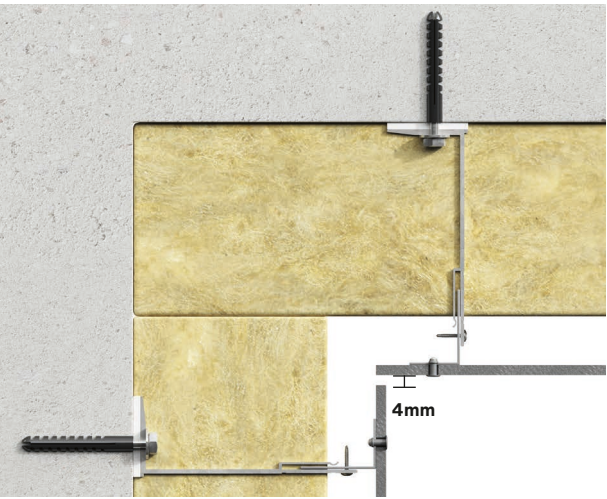
Installation

Details



Horizontal view: External corner construction with open joint
It is possible to create an external corner detail without a Swisspearl corner profile. To do this, use an angle profile behind the facade board and fix it with rivets.

There should be a min. 4mm gap between the facade boards forming the corner joint. For aesthetic reasons, use a flat EPDM or UV tape to cover the aluminium angle profile. The distance from the corner to the first vertical T or L profile should not be more than 200mm.



Horizontal view: Internal corner construction with open joint
There should be a min. 4mm gap between the facade boards forming the corner joint.

If using corner profiles behind the boards, Swisspearl recommends to use a flat EPDM or UV tape to cover the aluminium angle profile for aesthetic reasons.



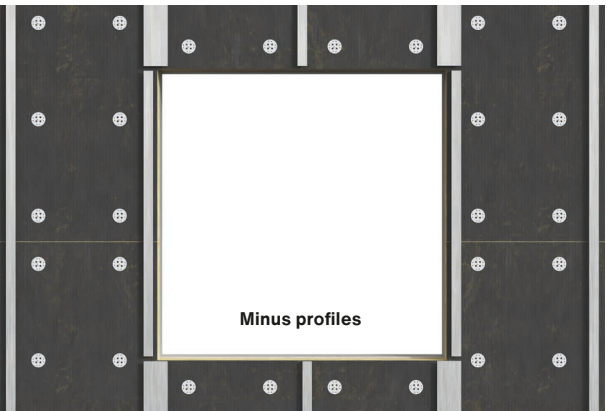
Vertical view: Plinth construction
Ensure that the facade boards extend beyond the base of the support by 10 to 30mm, enabling water runoff from the facade. Install a ventilation grille at the base of the cladding to prevent insects and vermin from accessing the space behind the facade boards. This profile should have an open area of at least 60% of the specified opening area below. Additionally, there should be a minimum free open area of 200mm, or an equivalent of 200cm² per meter.



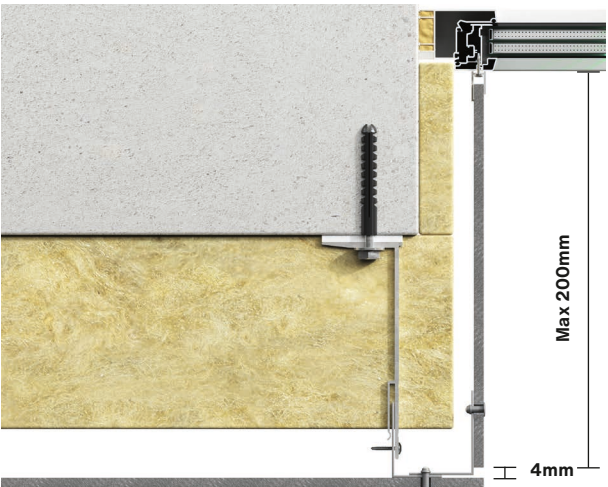
Vertical view: Top construction
Make sure that air can move freely from throughout the construction. There should be a minimum free open area of 20mm, or equivalent 200cm² per meter to provide adequate ventilation throughout the system. There should be a minimum gap of 30mm between the front face of the facade board and the drip edge of the capping.

Installation

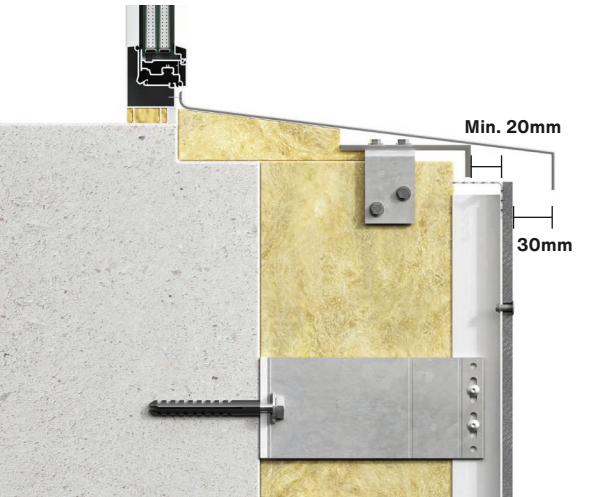
Details



Front view: Aluminium support systems at window openings
Do not put any horizontal profiles under or over windows as this will cut off the ventilation. To allow for angled sills, ensure profiles are cut to the right length to allow water to run off.



Horizontal view: Window jambs
Swisspearl facade boards can be used for window jambs and returns. Fix facade boards at the corner with rivets through angled profiles. If the jamb depth is less than 200mm, the facade board can be installed using a U profile mounted on the window. If the depth is more than 200mm, insert an additional profile, onto which the jamb board can then be fixed. There should be a min. 4mm gap between the facade boards and the window jambs.



Vertical view: Window Sill
Swisspearl facade boards should not be used as sills. We recommend the use of formed aluminium or steel profiles. It is recommended that the sill projects a minimum of 30mm beyond the face of the facade. There should be a minimum free open area of 20mm, or equivalent 200cm² per meter between the top facade board and the sill to ensure adequate ventilation behind the facade.

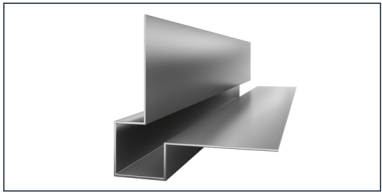


Vertical view: Window head
As with jambs, the window head can be formed using Swisspearl boards. At the front edge of the head detail, ensure a minimum free opening area of 20mm, or equivalent 200cm² per meter to ensure adequate ventilation behind the facade. If ventilation profiles are used, the perforated opening area must correspond to min. 60% of the opening area.

Profiles

Swisspearl offers a wide range of profiles to create weathertight and aesthetically pleasing facades. All Swisspearl Profiles are available in a variety of standard or special colours - either pre-painted or powder coated. The profiles are fixed using double sided tape and will be further fastened as the boards are installed using rivets.

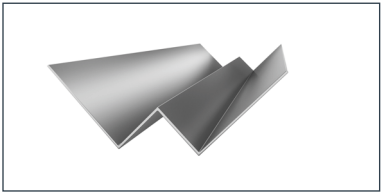
Most Swisspearl profiles are fabricated from 1mm thick formed aluminium. For standard boards, the profiles are pre-coated formed aluminum which has a gloss 30. For non-standard colours, the profiles are unpainted formed and powder coated aluminium with a paint of gloss 70. The profiles in standard colours are protected with a sticky foil.



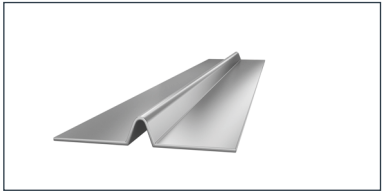
1. Swisspearl External Corner Small
Length 3000mm



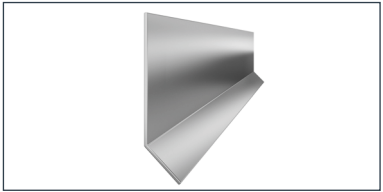
2. Swisspearl External Corner Peak
Length 3000mm



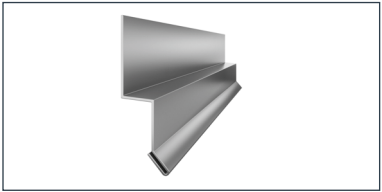
3. Swisspearl Internal Corner
Length 3000mm



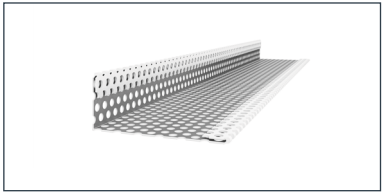
4. Swisspearl Caulking Profile
Length 3000mm



5. Swisspearl Horizontal L Profile
Length 3000mm



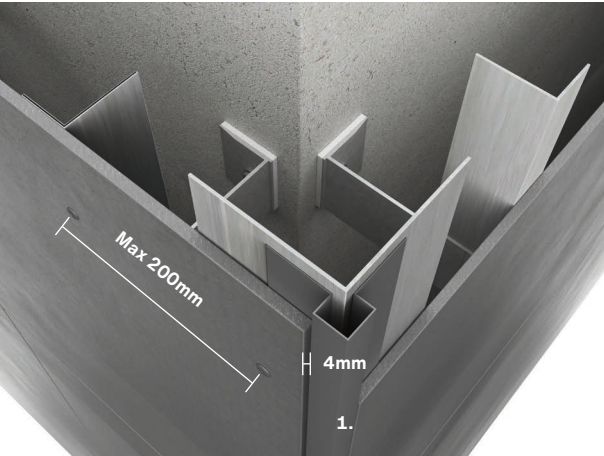
6. Swisspearl Drip Small
Length 3000mm



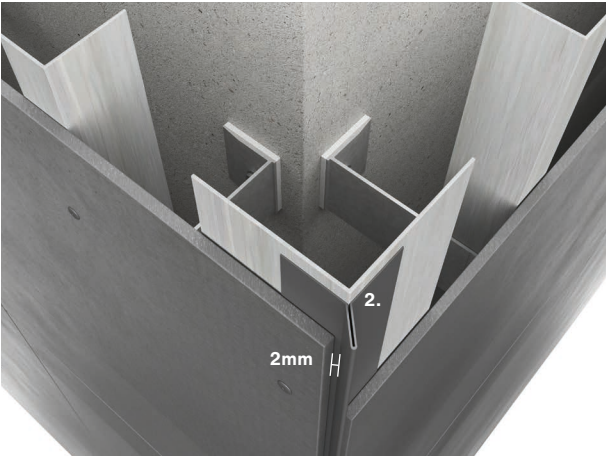
7. Swisspearl Ventilated Profile
0.6 mm white perforated steel
Length 3000mm

Profiles

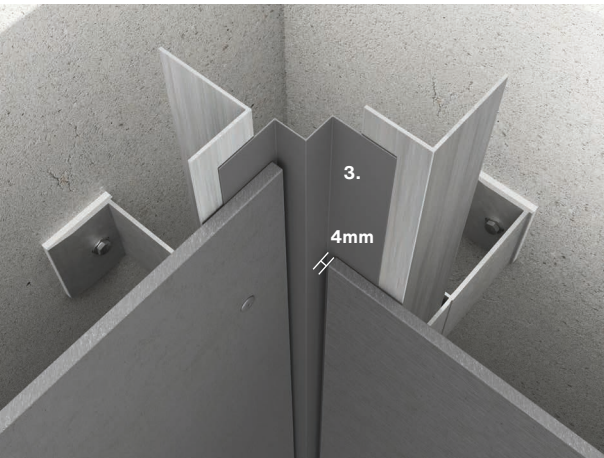
Profile Use



Swisspearl External Corner Small is used for 90° external corner constructions, to create a securely finished detail. Use double sided tape to temporarily fix the profile to the facade board before fixing it with rivets. Make sure the correct edge distances and hole sizes are used. The distance from the corner edge to the wall T or L profile should not exceed 200mm. There should be a minimum 4mm gap between the board edge and the profile.



Swisspearl External Corner Peak can also be used for 90° external corner constructions. It is installed in the same way as Swisspearl External Corner Small. The distance from the inside edge of the facade boards to the profile should be a minimum of 2mm.



Swisspearl Internal Corner is used for 90° internal corners. Secure the profiles with double sided tape. Once fixed, the facade board will secure the profiles in position. There should be a minimum 4mm gap between the board edge and the profile.

Profiles

Profile Use



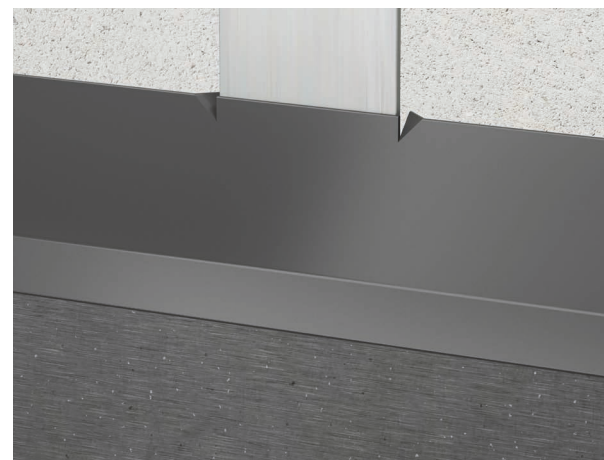
Swisspearl Drip Small is used to drain water away from the supporting structure or where neat detailing is required at the foot of the facade. The profile can be used in conjunction with Swisspearl Ventilated Profile to ensure that insects and vermin cannot enter the cavity behind the facade boards. There should be a minimum 4mm gap between the board edge and the profile.



Swisspearl Caulking Profile can be used in both vertical and horizontal joints. It is not mandatory to use Swisspearl Caulking Profile, but it provides excellent joint solutions. The profile is installed in the same way as Swisspearl External Corner. There should be a minimum 4mm gap between the board edge and the Swisspearl Caulking Profile.



The Horizontal L Profile used for horizontal joints should be cut in the same length as the width of the facade board.



It may be useful to cut and fold out a triangle in the horizontal profile on each side of the vertical T- or L-profile, as shown in the illustration. This will prevent the horizontal profiles from moving.



Accessories

When fixing Swisspearl facade boards using aluminium, use purpose-designed accessories. In general, using appropriate tools will achieve the best installation.



Swisspearl Rivets Aluminium
RIV-A EPDM Washer 4.0x20mm
Aluminium body and Stainless steel mandrel. Unpainted or colour coated to the facade boards
Grip Range 11-15mm



Swisspearl Fixing Sleeve
Sleeve for Alu rivets
Material: Aluminium



Tool Box Aluminium
1. Centralizing Tool for aluminium
2. Stand-off Head
3. 2 Pcs. HSS Drills 4.1mm



Centralizing Bit Drill



Swisspearl Nose tool



Swisspearl Dyvel Drill
HM 9.5x35 70mm

Swisspearl Blades
For cutting Swisspearl facade boards, the following blades can be used.

Diameter	Ø160	Ø190	Ø216	Ø250
Thickness mm	2.2/1.6	2.2/1.6	2.2/1.6	2.6/1.8
Centre hole mm	20	20	30	30
RPM	4800	4000	3500	3000
Teeth	6	4	6	14



Drill
For pre-drilling of Swisspearl facade boards, please refer to your local Swisspearl office for instructions.

Diameter	9.5 mm
----------	--------



Accessories

Rivets

Rivets for Swisspearl facade boards
Use Swisspearl Aluminium Rivets RIV-A EPDM 4.0 x 20mm

Use Swisspearl Fixing Sleeves at the fixing positions - see page 18.

Installing Swisspearl facade boards using rivets
Before installing the boards, pre-drill holes in Swisspearl facade boards using a Ø9.5mm drill.

Dust from cutting or drilling must be removed with a brush or compressed air immediately after the work has been completed, otherwise it can mark the surface of the boards.

Before drilling the holes in the aluminium profiles, place the facade board in its intended position on the aluminium structure. You can hold the board in place using locking pliers or use a supporting board below the facade board.

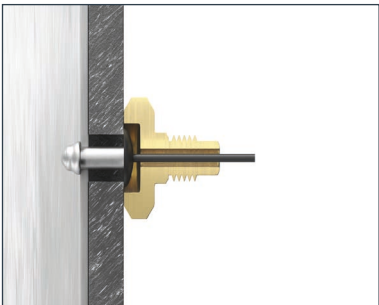
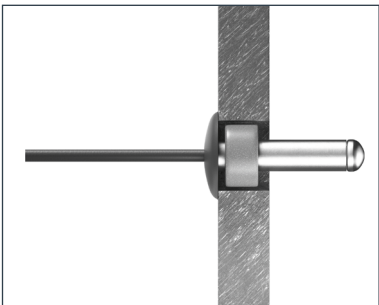
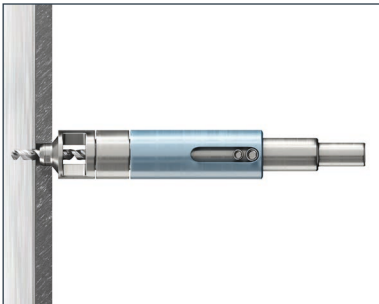
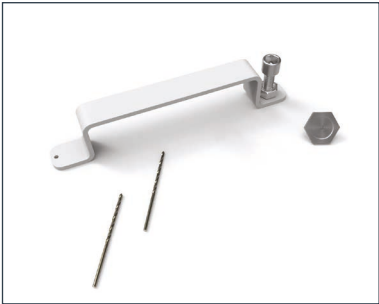
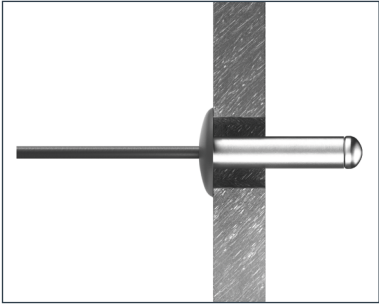
Centralising tool
Position the centralising tool through the pre-drilled hole in the board to ensure accurate fixing hole positions in the aluminium profiles that perfectly match the board's hole positions. Use an 4.1mm HSS Drill for drilling fixing positions in the aluminium.

Alternatively, a Centralizing Bit Drill can be used.

For the fixing points, you must insert the rivets into the Swisspearl Fixing Sleeves and install them at the fixing positions of the board.

All other rivets are installed without the fixing sleeve to allow the boards to move freely in the sliding points.

The Stand-Off Head must be used for all rivets. This provides a small space between the board and the rivet head to allow for movement caused by moisture or temperature changes.



Accessories

Swisspearl Blade

To ensure a neat finish when cutting Swisspearl facade boards, it is important to use the correct blade. Swisspearl recommends using Swisspearl Blades as they have been customised for the purpose and leave you with the best end-result.

The blades have trapezoidal diamond teeth which provide excellent cutting quality and extremely long durability. In addition, the amount of dust generated is significantly reduced compared to similar blades.

The Swisspearl Blade is available in 4 sizes depending on which saw is used.

The Swisspearl blade can be used with dive saw, circular saw and stationary circular saw.

The Swisspearl Blade is a high quality product that can be sharpened, thus improving asset cost efficiency.

To achieve the best quality cut and to know which side to cut from, make sure to follow the instructions shown here. The direction varies depending on which saw you use.

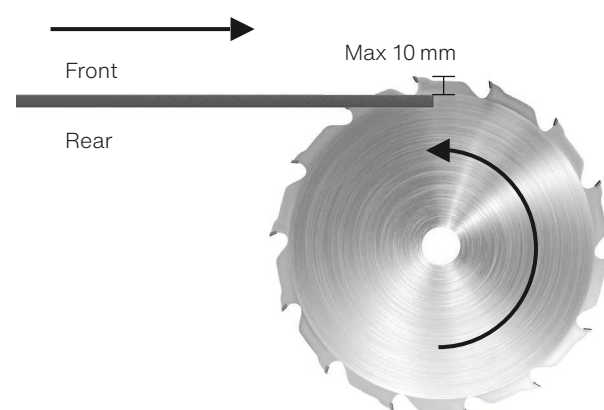
Handling

When cutting the facade boards, do not force the sawblade through the board. If you force the saw, the blade might overheat causing small vibrations - affecting the straightness of the cut or causing the board to flake if near the edges. The blade depth must be adjusted so that the blade goes max 25/64" through the board.

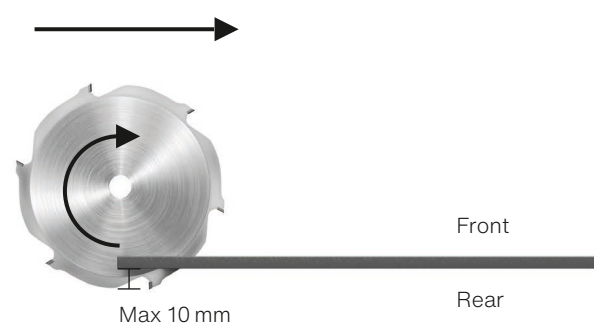
It is important to remove dust caused by cutting and drilling immediately either with a soft brush or a vacuum cleaner as it otherwise might damage the boards. Ensure that the boards are properly cleaned before installation, and if necessary use clean water, or water with a mild detergent and a soft sponge, or brush to remove dirt and dust from the surface.

Local requirements regarding safety must always be followed. Make sure to use correct safety equipment such as masks and dust ventilation and ensure that the saw is set up correctly according to the manufacturer's instructions.

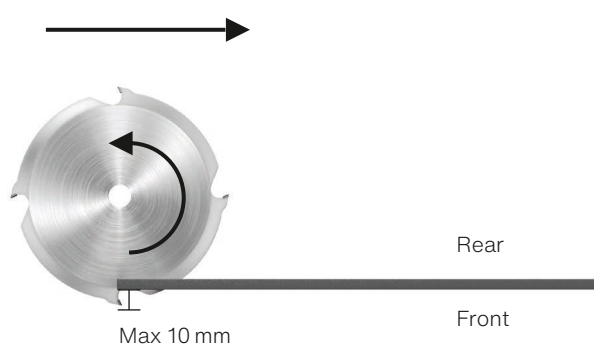
Never use water when cutting Swisspearl facade boards.



When using a table saw, place the board with the face uppermost on the table and cut from the rear of the board.



When using a mitre saw, cut the board from the front.



When using a circular saw or dive saw, cut the board from the rear.

Storing and Handling



Swisspearl products are delivered with plastic protection cover. If undamaged, the plastic cover provides good protection against dust and weather conditions during transportation. Always store Swisspearl products on a flat dry level surface.



Only two pallets must be stacked on top of each other. Make sure they are positioned so they stand securely and stable.



If the pallets are stored outside when they arrive at the building site, the plastic cover should be removed. The facade boards should be stored on the pallet or sleepers with max 500mm distances.



Replace the plastic with a tarpaulin. It is very important that there is ventilation all around the tarpaulin and also on top of the pallet under the tarpaulin. This is done to make sure that condensation is reduced as much as possible.



If Swisspearl facade boards are stored more than 2-3 weeks on site, the pallets should be kept under a roof to ensure dry and ventilated conditions.



Do not drag products from the pallet, as it may leave permanent scratch marks. Lift the product by its narrow edge as it may break if handled incorrectly.

Care & Maintenance

On-site

Cleaning of boards after cutting and drilling

It is important to immediately remove dust caused by cutting and drilling from the front and rear of the boards with a soft brush/duster or a vacuum cleaner, as it otherwise might damage the boards. Ensure that the boards are properly cleaned before installation, and if necessary use clean water or water with a mild detergent and a soft sponge or brush to remove dirt and dust from the surface. Thereafter, wipe the boards with a damp cloth. It may also be necessary to wash the surface after installation if the building site conditions have been unfavourable. This is done with lots of clean water or water with a mild detergent and a soft sponge or brush and finally wiping the boards with a damp cloth.

Removal of calcium-based residues

Calcium carbonate residue may occasionally be seen on the board surface. This can be difficult to remove with water or even with detergents because it does not dissolve in water. For cleaning purposes 10% acetic acid (CH3COOH) solution is used to dissolve the calcium compounds.
Note! Carefully observe safety precautions (MSDS) when working with acetic acid. R-phrases R36/R38 is valid: "Irritating to eyes, respiratory system and skin". Use proper clothing, nitrile rubber gloves, eye protection goggles and approved respirator (filter A, E or A/E).

Carry out the mixing outdoors. Apply the diluted 10% acetic acid solution evenly with a spray can to the surface of the stained board. Leave it to react for a few minutes. Do not allow the solution to dry, but rinse with lots of clean water. Repeat the process if necessary and rinse with water afterwards.

Note! Do not execute the cleaning process with acetic acid in direct sunlight or on hot surfaces. This might create permanent stains.

Cleaning of neighbouring areas

Windows and glass in particular but also other adjacent areas must be kept clean during the facade board installation and if necessary protected with plastic film. Alkaline leaching from cement bonded materials (dust from cutting or drilling holes in structural concrete, etc.) is prone to damaging glass and other materials. Therefore, frequent cleaning during and after the construction period is needed.

Surface damages and scratches

Damages and scratches should be avoided by lifting the boards off the pallet and handling them carefully during installation. Scratches might leave white streaks on the surface which will turn dark when exposed to rain, because the board absorbs water through the scratch. Repair paint is not available. In any case the dark area will diminish after 6 to 12 months, because of the carbonation reactions in the cement matrix of the board.

Behaviour in wet conditions

Since the boards are made of Portland cement, their colour may turn darker when exposed to rain if the board absorbs moisture through holes, scratches or insufficiently sealed edges. This is natural behaviour for any cement-based product and it does not affect the integrity or long-term durability of the board. The original colour is restored as soon as the boards dry out. The darkening will show after heavy rainfall for the first months after installation. It will gradually reduce within 6 to 12 months, because the cement-based matrix reacts with carbon dioxide from the atmosphere – carbonation – and thereby reduces water penetration.

Care & Maintenance

After installation

Annual Inspection

Normally Swisspearl facade boards do not require any maintenance. Weathering may however influence the appearance of the facade. Therefore, an annual inspection of the ventilation gaps, joints and fixings is a good idea.

Detection and repair of possible damage ensures a prolonged lifespan for the facade.

Cleaning

Swisspearl facade can be cleaned with cold or lukewarm water if necessary with the addition of a mild household cleaning agent not containing solvents. Always start from below with well-defined areas. Rinse with plenty of clean water until the facade is perfectly clean. Before cleaning full scale, it is recommended to test the chosen cleaning method on a smaller area to ensure it works and does not damage the board surface.

High-Pressure Cleaning

Warning! High Pressure Cleaning is a severe treatment for fibre cement facade. Exaggerated or wrong use of a high pressure cleaner may damage the surface. Therefore, High Pressure Cleaning is not recommended.

Moss & algae

Moss and algae growth can be removed with common agents available on the market. Care should be taken to ensure that the cleaning agent does not cause damage to the surface of the Swisspearl facade boards. Confirm the compatibility of your cleaning agent with your cleaning agent supplier, and ensure it is applied according to the supplier's instructions. It is advised that before conducting a large-scale application a test is carried out on a small, inconspicuous area to ensure that the cleaning agent has no effect on the colour of Swisspearl facade boards.

Efflorescence

Efflorescence is a naturally occurring, white, powdery deposit that can appear on cement-based building materials (including bricks, cement walls, grout, and fibre cement). It is the result of a process in which moisture draws salt crystals to the surface, evaporates, and leaves a chalky substance behind. Efflorescence occurs when all three of the following-conditions exist:

1. Water-soluble salts are present in the building material.
2. There is enough moisture in the wall to turn the salts into a soluble solution.
3. There is a path for the soluble salts to get to the surface.

Efflorescence may also be a sign of water ingress behind the facade. Make certain that all openings are properly covered and there is no water intrusion due to over-driven nails. While some efflorescence may weather away naturally on its own, it is best to take steps to treat it.

Efflorescence can be removed with household white vinegar and water. For most cases of efflorescence, Step 1 - 3 works well. But for substantial deposits of efflorescence go to Step 4.

For best results, follow these cleaning instructions:

1. Protect areas that are not to be cleaned. Rinse all plants and vegetation around the facade with water before and after application of the vinegar.
2. Generously coat the entire surface area with vinegar. Allow the solution to sit on the surface for 10 minutes.
3. Rinse the treated area thoroughly with water from the top down and allow the area to air dry.
4. For extra tough efflorescence: Use a 10% acetic acid solution and apply to affected area with a cotton cloth. A light scrubbing with the cotton cloth may be required. After about 20 seconds rinse with water.

Health and Safety

As with all building materials, safety precautions must be taken into account and local laws and regulations must be observed.

Cutting and drilling

When cutting, grinding or drilling, dust from the fibre cement boards is released. This dust is characterised as mineral dust. Breathing large amounts of dust may cause irritation to respiratory functions, eyes or skin. Therefore, Swisspearl always recommends wearing personal protection equipment or stated by local law (Safety goggles, safety suit and a respiratory mask - P2 marked).

When cutting Swisspearl facade boards ensure adequate ventilation.

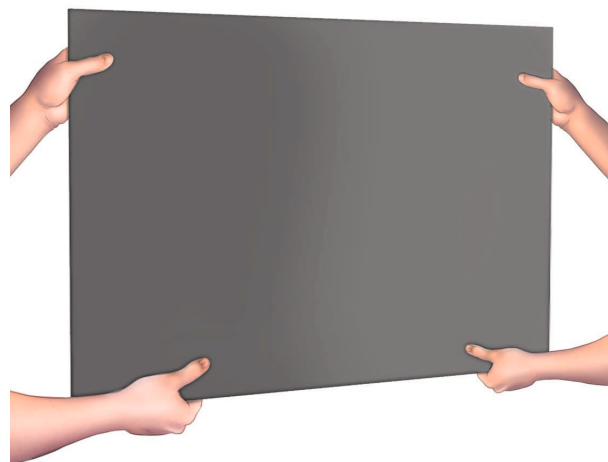
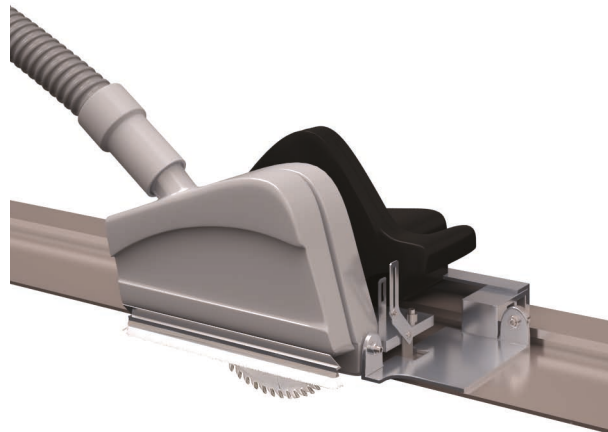
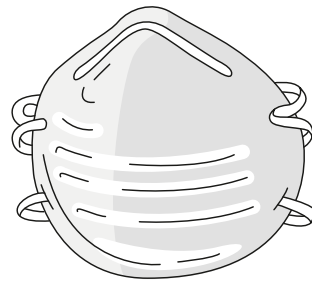
If the boards are cut indoors, it may be necessary to use an extractor system or a HEPA filter vacuum attachment attached to the power saw. When cutting outdoors, you should also use a HEPA filter vacuum attachment to the power saw. If ventilation is not adequate to limit exposure, wear a disposable respirator or air purifying cartridge respirator fitted with a Class P2 filter (European EN 143 standard). To reduce exposure to dust, Swisspearl recommends using Swisspearl Circular Blade.

Lifting Swisspearl facade boards

When lifting Swisspearl facade boards, please consider your lifting methods both in terms of safety but also to avoid damaging the boards.

When lifting or moving the facade board, please make sure to lift the board by its narrow edge as it may otherwise break if handled incorrectly.

If lifting Swisspearl facade board manually, make sure to adhere to any local rules. When lifting large boards, use mechanical lifting gear if possible. If this lifting gear uses suction/vacuum, be careful not to apply too much suction, as this may damage the surface or leave permanent marks.



Onsite Handling

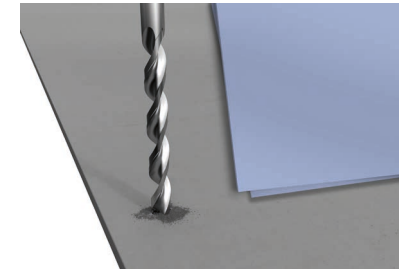
Swisspearl facade boards are supplied with a polyethylene foam layer between each board to prevent scratching and damage to the surface. The polyethylene is an environmentally friendly polymer that can be disposed of as normal combustible waste.



When marking the boards, make sure that marks are no larger than the hole to be drilled or no thicker than the blade that is to cut the board, as it can be difficult to remove marks from the board afterwards.



Once boards are cut, you can bevel the cut edge with a fine grinder (80 grain) to give the edge a pre-cut finish. The bevel should be angled at 45° relative to the board. This retains edge strength and removes small irregularities.



If not using Swisspearl Facade Wing Screws, the boards should be pre-drilled with an appropriate fibre cement drill bit. Dust from cutting or drilling must be removed with a brush or a fiber cloth immediately after the work has been completed, otherwise it can mark the surface of the boards.



Swisspearl Danmark A/S

Gasværksvej 24, 1.
9000 Aalborg
Danmark
+45 99 37 22 22
info@dk.swisspearl.com

[swisspearl.com](https://www.swisspearl.com)