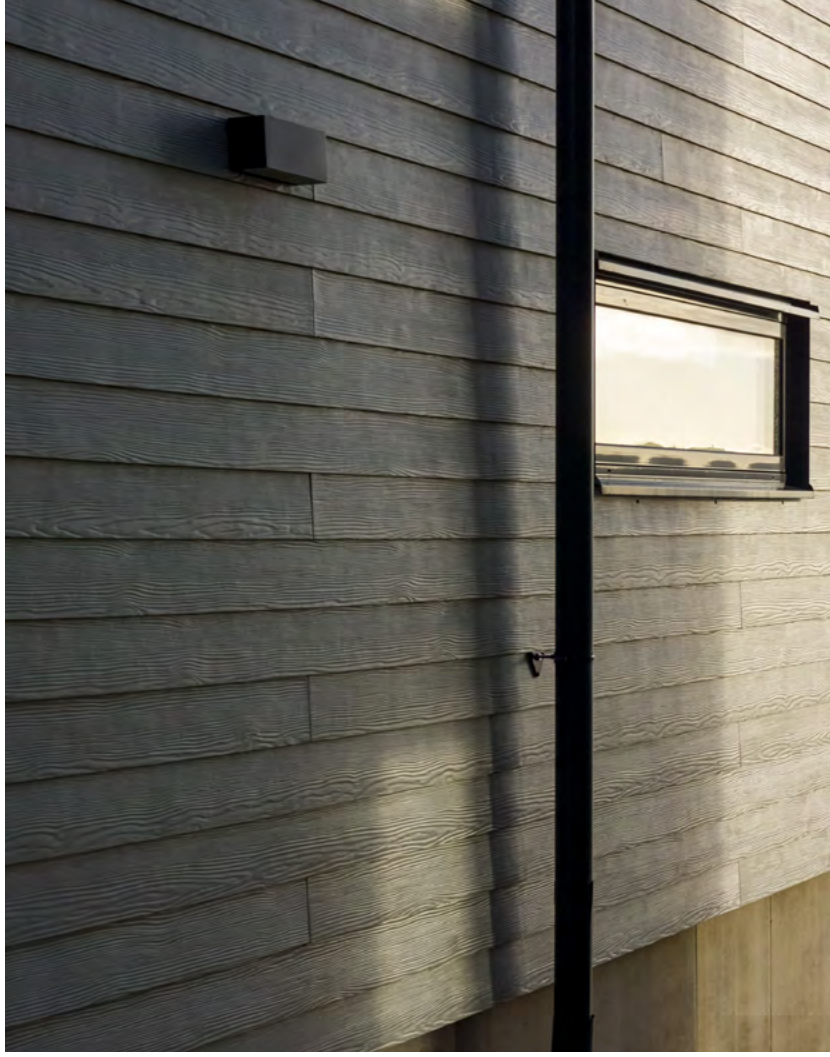


SWISSPEARL

Swisspearl Plank



Housing estate at the marina, Sweden





Content

Material & Durability	2 – 3
Rear-Ventilated Facade System	4 – 5
Benefits	6 – 7
Renovation & Material combination	8 – 11
Product overview Plank Connect	12 – 17
Product overview Plank Original	18 – 23

Add a natural look.
Add the strength
of fibre cement.
Add personality.



Swisspearl Plank is inspired by nature's own design – and created to keep your building safe from wear and tear, heat and cold.

Swisspearl Plank is now available as both traditional lap planks and the new tongue and groove click system.

The product series combines the natural wooden look with high-level durability, giving your building protection against natural elements.

Made from resilient, low-maintenance fibre cement, Swisspearl Plank is the clever, beautiful and long-lasting alternative to wood.

Made from natural materials, our planks are literally designed to last you a lifetime.



The natural choice
– with exceptional durability

Swisspearl Plank and Swisspearl Plank Connect are made from fibre cement, designed with typical Scandinavian thoroughness and an eye for detail, are built to last. They withstand everything from searing sunshine to blizzards and torrential rain. And all of this, with virtually no maintenance.

Fibre cement is a natural product made of cement, water, minerals and fibre – and it is changing the way we design and build facades around the world thanks to its long-lasting, expressive qualities.

Every Swisspearl Plank is designed to be:

- Durable – resilient to moisture, dirt and wear-and-tear
- Fire-safe – protecting people and assets
- Low-maintenance and hassle-free
- Surface-treated for resistance to mould and fungi

The ventilated facade

Swisspearl Plank not only adds personality and quality, it is the perfect match for a ventilated facade.

A ventilated facade helps minimise temperature variations in the wall throughout the year. Sunlight and heat are reflected away from the building in the summertime, and insulation behind the facade reduces heat loss at lower temperatures. At the same time, the natural ventilation passing through the structure minimises condensation.

Additional benefits

The ventilated facade has a range of additional benefits:

- Protects the underlying structure from weather conditions
- Drainage of rain water away from the structure
- Low weight facade enables energy-efficient design
- Thin wall structure resulting in more living space
- Flexibility in design with horizontal or vertical joints and board-orientation
- Low maintenance
- Long lifespan





Warranty

For more details about our Swisspearl warranty, please refer to your local Swisspearl website.

DIM – Design and Installation manual

Please download the latest version of the Swisspearl Facade Design and Installation manual at [swisspearl.com](https://www.swisspearl.com).

Swisspearl Plank shields you from nature. Naturally.

Swisspearl Plank is the obvious choice for a classic facade solution. Inspired by nature's own design, you can choose between a wide range of colours with textured surface – all while enjoying the benefits of the strong fibre cement material.



With Swisspearl as a partner, you are guaranteed excellence in every step of the process: from a complete portfolio of solutions and accessories to a leading 15-year warranty. And from the quality of the paint layer and backside coating to how the protective foil is wrapped around the finished product.

A classic choice with benefits that will meet your expectations now and in the future.

Long-lasting natural look

Swisspearl Plank facade solutions offer the best of both worlds: a truly authentic natural wood look, combined with stability, resistance to the nature's elements and a long lifespan with an absolute minimum of maintenance.

"Natural wood must be refreshed every five to eight years to maintain its colour, whereas Swisspearl Plank Original does not require re-painting. Once the facade is fixed, the long-lasting boards will not change appearance — even in rough weather conditions. This is a considerable advantage."

At Swisspearl, we continue to innovate so that building residents can enjoy the above benefits and contractors and carpenters can take pride in the quality of their work.

No way in for moisture

In these Swisspearl products, every single square millimetre of the fibre cement is coated so that moisture simply does not have a chance to find a way in, which helps to avoid deterioration and discolouration.

Unwavering appearance

Swisspearl Plank will not warp, deform, rot or discolour. No periodic repainting needed as they will exhibit the same natural properties that made owners or architects choose Swisspearl products in the first place.

Inspired by natural design

The plank boards get a pigmented primer in the same colour as the top coat to give a deep finish. The end result is a product that looks like natural wood with grooves and patterns in a high degree of variation, just as in wood.



Breathing new life into existing buildings

There are many reasons why Swisspearl Plank is frequently used when renovating houses or in urban regeneration projects.

Easy to work with

For a start, they are easy to work with – for both the DIY enthusiasts and the professionals. Surprisingly light-weight given their robust, durable nature, they are an obvious alternative to wood or composite material claddings, giving additional protection to the house while bringing a touch of long-lasting elegance. To further minimise potential hassle during installation, we offer plenty of accessories from various aluminium profiles and trims to screws (in matching colours), paint and even tools.



Alternative to wood

Swisspearl Plank is ideal for replacing high-maintenance wood as an alternative solution. As a weatherboard for example, or in soffits, gables, dormer windows, fascia boards, hanging eaves, garages, or as balcony skirting.



Surface: Textured

Energy efficiency

Energy efficiency is another area in which renovation with Swisspearl can make a difference. By using Swisspearl Plank as cladding on top of an existing brick wall, it becomes possible to introduce an extra layer of insulation between the two surfaces thereby reducing the energy bill.

Designed to mix-and-match – the new old trend

Combining different building materials has been a part of building traditions for centuries. The trend has developed continuously through the years and so have the materials and underlying reasons behind the combinations. Today, the combination of materials can be chosen for several reasons, it can merely be an aesthetic choice, an economical choice or a way to meet market standards of energy efficiency or sustainability which has gained ground in the last decade.



Swisspearl Plank, with its versatile application and design options, is the ideal product for renovation of older houses. Swisspearl Plank can be used to complement older brickwork, a modern render or glass facade.

Blending in while standing out

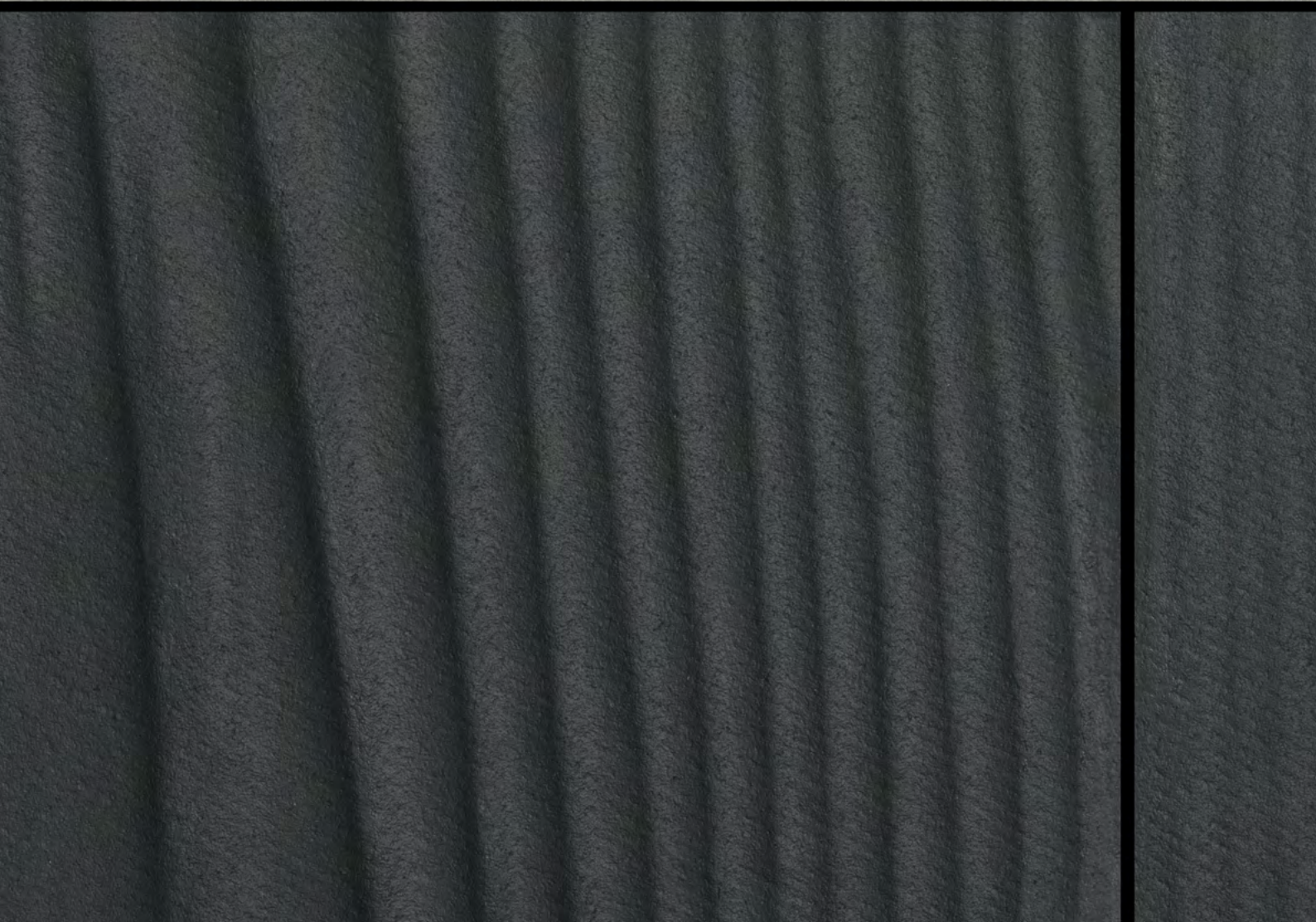
Architects design with Swisspearl Plank not only because it is visually attractive and combines perfectly with other cladding materials but also because of its technical performance and ease of installation. They are available with an authentic-looking textured finish.

The matte coating applied as protection results in a very natural, wood-like appearance. Additionally, there are 13 standard colours for Swisspearl Plank Original and 9 standard colours for Swisspearl Plank Connect. With such a wide range of design possibilities to choose from, it becomes possible to achieve precisely the kind of results that will leave homeowners talking about their home with pride for years to come. Whether people are looking for a modern look, a functional fix or an added touch of classic elegance, we have a solution that fits for every requirement.



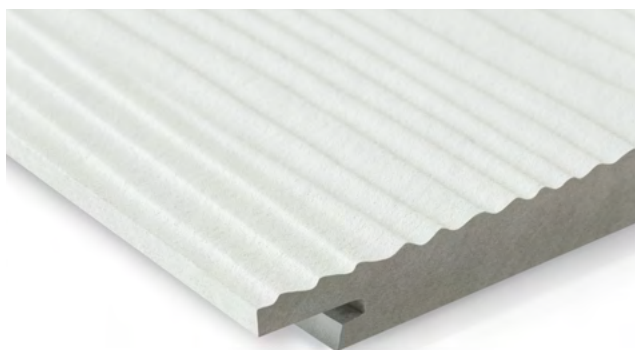
PLANK CONNECT

Combining natural beauty with lasting durability and minimal maintenance. Allowing with its tongue & groove an elegant, concealed installation. Ensuring a strong and durable connection.





PLANK CONNECT



Swisspearl Plank Connect is a facade system consisting of tongue and groove planks and stainless steel clips. The planks are fire, mold, and fungi resistant fibre-cement planks. The Swisspearl Plank Connect clips allow for easy hidden fixing of the planks and guarantees a strong and long-lasting connection. In general we have a 15-years warranty on these products.



Technical data

Panels

The panel is coloured through in grey.

Coating: Opaque

Surface: Textured

Panel format

Swisspearl Plank Connect:

Maximum usable format 210 x 3000 mm,
panel thickness 11 mm (visible width 200 mm).

Colours

Textured surface:

9 standard colours.

Mounting

Invisible mounting system with connection clips.

Technical data

Detailed information can be found in the

"DIM Design and Installation Manual – Swisspearl Plank Connect on Wood".

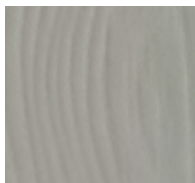


Inspiration, Swisspearl

Surface: Textured



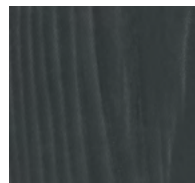
CP 010
Agate Grey



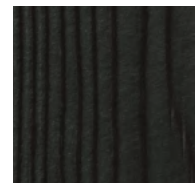
CP 040
Granite Grey



CP 050
Bark Brown



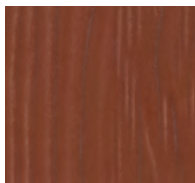
CP 150
Anthracite Grey



CP 180
Signal Black



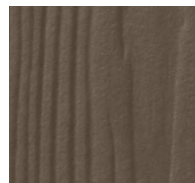
CP 210
Pure White



CP 370
Oxide Red



CP 410
Light Brown



CP 480
Dark Brown

Swisspearl Plank Connect – long-lasting beauty. Naturally.

Swisspearl Plank Connect is the obvious choice for a modern facade solution. It is the high-quality, low-maintenance solution delivered with an eye for detail.

As easy to install as it is to maintain

The Tongue & Groove system guarantees a smooth one-click installation. This strong and durable fibre cement cladding outperforms wooden alternatives. The straight contemporary profile and weather resistant coating all around are in a class of their own.

Every plank is developed to exceed expectations in every way: easy application, high-end aesthetics, fire safety and low maintenance.

Swisspearl Plank Connect is truly nature's design, connected with all the modern benefits.



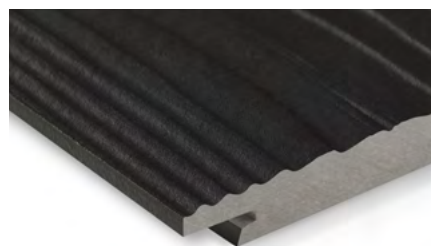
Inspiration, Swisspearl



An ideal solution for your holiday home

When choosing Swisspearl Plank for your holiday home, the natural appearance and the durable nature of the Swisspearl Plank will offer you a unique appearance that naturally blends in with the surrounding area meanwhile withstanding the exposure of the rough weather, and most importantly, the limited maintenance needed will give you more time to spend with your family.

17



Surface: Textured

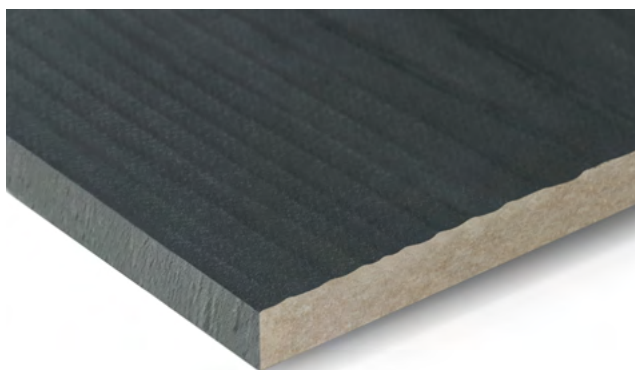
PLANK ORIGINAL

Natural aesthetics, durability, low maintenance.

Its textured surface create an authentic appearance,
no matter the weather conditions.



PLANK ORIGINAL



Swisspearl Plank is the ideal solution to replace the use of high-maintenance wood on your facade. It can be installed like any wooden facade alternatives. Because of the excellent properties of fibre cement, it does not rot, crack, warp or require repainting. In general we have a 15-years warranty on these products.

Technical data

Panels

The panel is coloured through in grey.

Coating: Opaque

Surface: Textured

Panel format

Swisspearl Plank Original:

Maximum usable format 180 x 3600 mm,
panel thickness 8 mm.

Colours

Textured surface:

13 standard colours.

Mounting

Visible on wooden substructure:

Installation on wood with invisible fixing top Plank or
with visible screws bottom plank with painted screws.

Technical data

Detailed information can be found in the "DIM Design
and Installation Manual – Swisspearl Plank Original".

Warranty

15 years

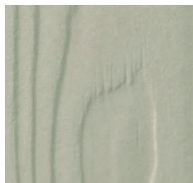


Inspiration, Swisspearl

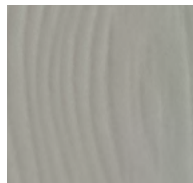
Surface: Textured



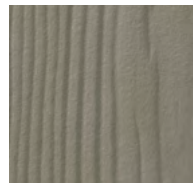
CP 010
Agate Grey



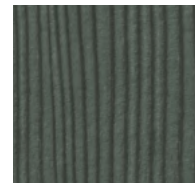
CP 030
Pebble Grey



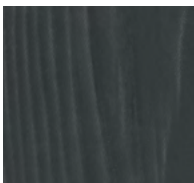
CP 040
Granite Grey



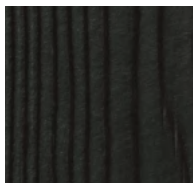
CP 050
Bark Brown



CP 080
Basalt Grey



CP 150
Anthracite Grey



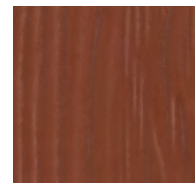
CP 180
Signal Black



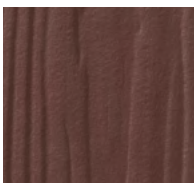
CP 210
Pure White



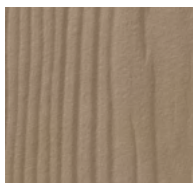
CP 280
Silk Grey



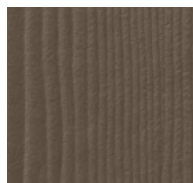
CP 370
Oxide Red



CP 380
Red Brown



CP 410
Light Brown



CP 480
Dark Brown

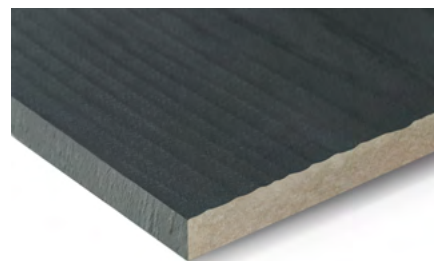
Tagholmen, Aalborg, Denmark

Swisspearl Plank Original – for an authentic facade

An authentic wood facade or a maintenance-free building is a frequent dilemma when it comes to industrial construction. In the Danish business park Tagholmen, however, the dilemma has been solved using the product Swisspearl Plank Original that combines a wooden aesthetic with a low-maintenance fibre cement material.

Located in the north of Denmark, the business park Tagholmen is strategically located near fjord, city and airport. In time, Tagholmen will consist of nine buildings creating a professional community for industrial technology companies. When the first 700 square metre structure was erected back in 2017, the builder was looking for a business environment with an inviting atmosphere:

“The owner of the property, who runs an industrial software company, was looking for a professional office space with a warm and welcoming atmosphere. Drawing inspiration from rustic industrial structures around the Holmen area in Copenhagen, we suggested an architectural design of Tagholmen. Besides the aesthetics, the level of maintenance was also important to the client because it is a commercial property”,



Surface: Textured



Tagholmen Business



says architect Claus Egerland from the Danish architectural firm Tegnestuen 3D and continues:

“To find the best possible solution, we consulted Swisspearl who suggested Swisspearl Plank Original. The Swisspearl Plank Original proved to be the perfect solution combining the look of a traditional wooden facade with the modern and practical function of fibre cement. The deep black colour of the facade boards highlighted the warm vibe of traditional Danish cottages at the same time giving it a strong industrial expression”.

Fixed in a traditional wooden pattern with overlapping planks, Tagholmen’s new facade leaves a vibrant and natural expression of natural wood. Before the construction of Tagholmen, Claus Egerland had only previously seen the facade material used for smaller constructions, e.g. cottages.

“I saw a great hidden potential in Swisspearl Plank Original and wanted to use it on a bigger scale – and the result was extremely satisfying”, Claus Egerland concludes.





Swisspearl GB Ltd

Unit 1a, Birchwood One Business Park
Birchwood, Warrington
Cheshire WA3 7GB
United Kingdom
+44 (0)203 372 2300
info@gb.swisspearl.com

[swisspearl.com](https://www.swisspearl.com)