

SWISSPEARL

Patina NXT

Swisspearl Patina NXT

Inspired by nature

A facade is more than just a part of the building envelope – it is an expression of character and vision.

Patina NXT gives this expression a new dimension.

The facade panels are the result of an innovative formula that harmonises elements of nature with the requirements of contemporary architecture.

The refinement gives the fibre cement panels impressive durability, resistance, and colour stability.

Patina NXT embodies natural surfaces that are aesthetically and functionally convincing.

They embrace time as a design partner, with a natural patination, but also withstand the challenges of the environment.

Every Patina NXT facade panel in the product range is inspired by nature itself. To meet the design requirements of architects around the world, the Patina NXT family includes four distinct products, each varying in structure and surface.

The background of the image is a complex, abstract composition. It features a large, dark, textured vertical band on the left side, which has a fine, grainy texture. To the right of this band, the background is filled with intricate, swirling patterns that resemble marbled paper or liquid motion. These patterns are composed of various shades of gray, black, and white, creating a sense of depth and movement. The overall effect is a sophisticated and modern aesthetic.

Patina Original

NXT



The Patina NXT Family

Discover Versatility

Patina Original NXT

Anything but ordinary. The sanded, matte surface beautifully accentuates the unique character of the raw material.

Patina Rough NXT

Rough on the outside, tough on the inside. A through-coloured fibre cement board with a rough, sanded surface and a stable core, which imparts a natural long-distance effect to any facade with subtle colour nuances.

Patina Inline NXT

Between shadow and light. An elegant fibre cement panel with a linear milled surface structure that changes its appearance between daylight and shadow, depending on the time of day and viewing angle.

Patina Structure NXT

A fibre cement panel with a strikingly structured surface that comes remarkably close to that of natural material. From the very beginning, it lends the façade a distinctive presence and, over the years, the natural patination unfolds into a truly unique expression.

The background is a complex, abstract composition. The left half features a vertical wood grain texture, with several distinct vertical planks of varying shades of gray and brown. The right half is a marbled or stone-like texture, with swirling, organic shapes in shades of gray, white, and brown. The overall effect is a sophisticated, monochromatic design.

Patina Inline NXT



Mix & Match

The facade as a living composition

Whether Patina Original NXT, Patina Rough NXT, Patina Structure NXT or Patina Inline NXT, each fibre cement panel imparts an unmistakable character to the facade. According to the Mix & Match principle, all panels in the Patina NXT range can be seamlessly combined to create bespoke facade designs in a range of natural colours. The blending of fibre cement panels weaves unique stories that come to life on the facade through varying light and weather conditions.

Lenght: 2500 / 3050 mm, **Width:** 1192 / 1250 mm,
Weight: 11.6 kg/m² (Patina Original NXT, Patina Rough NXT, Patina Structure NXT),
14.1 kg/m² (Patina Inline NXT)



Patina Rough NXT



Natural Colours

Easy to combine

Patina Original NXT



P 222



P 545



P 020



P 045



P 070



P 313



P 333



P 323



P 343



P 565



P 626

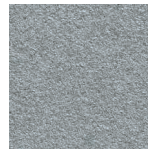
Patina Rough NXT



P 222



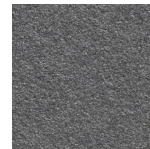
P 545



P 020



P 045

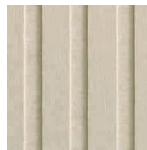


P 070

Patina Inline NXT



P 222



P 545



P 020



P 045

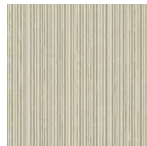


P 070

Patina Structure NXT



P 222



P 545



P 020



P 045



P 070



P 313



P 333



P 323



P 343



P 565



P 626



Patina Structure NXT





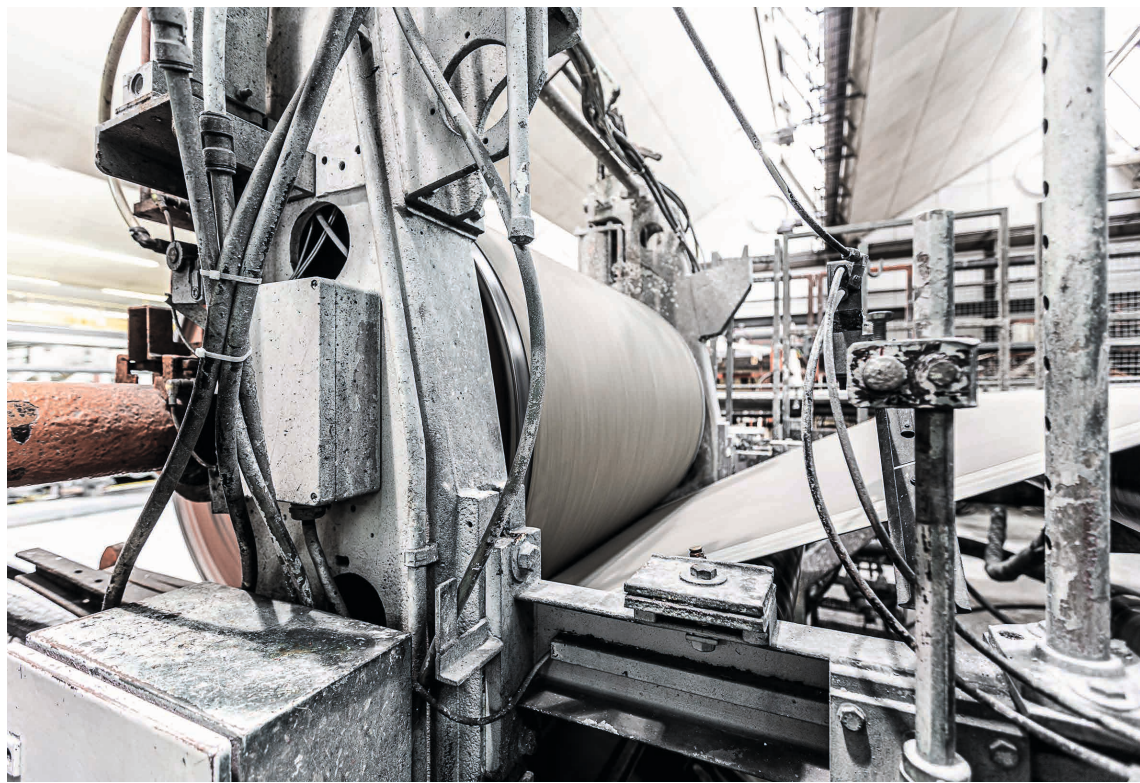
New technology for long-lasting surfaces

Patina NXT offers both aesthetic and functional surfaces that, thanks to the new technology, provide greater resistance to environmental impacts and longer-lasting colour retention on the facade.



Refined to perfection

The fibre cement panels impress with their innovative new formula, including CEM II, which makes them even more durable and resilient.





Swisspearl GB Ltd.

Unit 1a, Birchwood One Business Park
Birchwood, Warrington
Cheshire WA3 7GB, United Kingdom
+44 (0) 203 372 2300
info@gb.swisspearl.com

[swisspearl.com](https://www.swisspearl.com)

Learn more

