

Special remarks

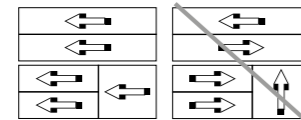
Carat, Reflex, Planea, Zenor:
Also available in 0.47" (12 mm) thickness.

Vintago, Vintago-Reflex, Avera:
Only available in 0.31" (8 mm) thickness.

Nobilis, Terra:
These 0.47" (12 mm) panels are only available in size 98.82" x 49.21" (2510 x 1250 mm).

Gravial:
Type L: Milled slots parallel to the long direction.
Type Q: Milled slots parallel to the short direction.
Only available in 0.47" (12 mm) thickness.

Patina Original NXT, Patina Inline NXT, Patina Structure NXT:
For planning/installation:
Note the direction of the panels.



General information

The various finishes and colors allow the unique character of Swisspearl panels to be expressed in an almost endless variety. Carefully selected colors emphasize the unmistakable aesthetic of the material.


- CARAT** Unique natural look and timeless beauty. The translucent, lightly pigmented finish adds a distinguished expression.
- GRAVIAL** Unique interplay of light and shadow. The linear, geometrical grooved surface offers countless options for making a bold design statement.
- VINTAGO** Naturally authentic, rough and unique. The sanded surface highlights the purity of the fiber cement panel.
- AVERA** Authentic and vibrant appearance. The transparent coating lets the natural look of the fiber cement shine through.
- REFLEX** Shiny look with metallic character. The iridescent surface coating gives the panels a sophisticated look.
- NOBILIS** Authentic fiber cement look. The translucent, lightly pigmented surface highlights the fiber cement texture in its natural beauty and elegance.
- TERRA** Earthy and warm atmosphere. The finely balanced colors evoke earth tones and give the building envelope a distinctly natural look.
- PLANEA** Fresh and colorful creativity. The matte and smooth finish emphasizes the clear and bright colors for an overall intense appearance.
- ZENOR** Zenor features an opaque coating and a homogeneous surface for simple, understated elegance.
- PATINA ORIGINAL NXT** Lightly sanded to bring out the character of the material. Its texture emphasizes the fibers and the distinctive qualities of the raw materials.
- PATINA ROUGH NXT** A rough, sandblasted surface creates a distinctive appearance with unique character.
- PATINA INLINE NXT** Light and shadow in the rhythm of time. Linear milled indentations create a dynamic appearance that changes depending on the time of day and viewing angle.
- PATINA STRUCTURE NXT** Structure created between shadow and light. Transforms fiber cement into a visual and tactile experience.

For detailed specifications please refer to our DIM (Design and Installation Manual) or contact our Technical Advisors.

Swisspearl Facade Delivery Program

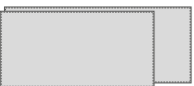


Natural range colors and sizes

		CARAT																		GRAVIAL				VINTAGO				AVERA				REFLEX				NOBILIS				TERRA				PLANEA				ZENOR			
		† optional transparent High-Resistant Coating ⋮ translucent lightly pigmented — colored through																		⋮ translucent pigmented ⌘ linear milled — colored through* or gray based				† optional transparent High-Resistant Coating ⌘ sanded — colored through				† optional transparent High-Resistant Coating ⋮ translucent strongly pigmented — gray based				† optional transparent High-Resistant Coating ⋮ translucent strongly pigmented — gray based				† optional transparent High-Resistant Coating ⋮ opaque — gray based — colored through in a similar shade to the surface															
		Anthracite 8021 Anthracite 8020 Anthracite 8023 Anthracite 8024 Azurite 8040 Jade 8053 Granite 8062 Granite 8060 Granite 8061 Crystal 8010 Ivory 8090 Ivory 8091 Ivory 8099 Limestone 8083 Sandstone 8000 Sandstone 8002 Amber 8075 Amber 8074 Coral 8033 Coral 8034																		Granite 624 Anthracite 3020* Crystal 125 Ivory 3099* Ivory 3090* Amber 723				VI 061 VI 021 VI 040 VI 050 VI 100 VI 011 VI 091 VI 001 VI 071 VI 031				AV 060 AV 020 AV 040 AV 050 AV 100 AV 010 AV 000 AV 070 AV 030				Granite 4161 Granite 4162 Anthracite 4021 Anthracite 4022 Jade 4051 Crystal 4112 Crystal 4111 Ivory 4091 Ivory 4092 Amber 4071 Amber 4072 Coral 4031				Amber 721 Amber 723 Granite 622 Anthracite 221 Azurite 421 Azurite 422 Jade 522 Jade 521 Granite 624 Crystal 123 Crystal 125 Crystal 122 Crystal 124				Amber 751 Amber 752 Amber 753 Amber 754 Amber 755 Amber 756				Midnight 231 Jungle 532 Cactus 531 Skylight 131 Igloo 932 Snowflake 930 Sunrise 831 Sunset 832 Ruby 334 Crimson 333 Dragon 332				69065 67014 67159 41055 51101 67007 63077 65061 65126 15015 11115 11006 23057 35154 33106 35005			
✂ Thickness																																																			
Largo 	Untrimmed 99.61" × 50" (2530 × 1270 mm) 120.87" × 50" (3070 × 1270 mm)																																																		
	Trimmed 98.43" × 49.21" (2500 × 1250 mm) 120.08" × 49.21" (3050 × 1250 mm)																																																		
	Trimmed - Type L 98.82" × 49.21" (2510 × 1250 mm) 120.08" × 49.21" (3050 × 1250 mm)																																																		
	Trimmed - Type Q 98.74" × 49.21" (2508 × 1250 mm) 119.61" × 49.21" (3038 × 1250 mm)																																																		


Natural range:
 Largo offers a great number of natural colors and surfaces. Most of the facade boards are through-colored featuring some individual color schemes from colorful opaque to noble translucent and natural transparent coatings, respecting the mineral appearance of fiber cement. These facade boards retain their overall visual impression over time, regardless of environmental influences, adding stability to the architecture.

Authentic range colors and sizes

		PATINA ORIGINAL NXT				PATINA ROUGH NXT				PATINA INLINE NXT				PATINA STRUCTURE NXT			
		⋮ hydrophobized — colored through				⋮ hydrophobized ⌘ roughened — colored through				⋮ hydrophobized ⌘ linear milled — colored through thickness: 0.37" (9.5 mm) milled to 0.31" (8 mm)				⋮ hydrophobized ⌘ linear milled — colored through			
		P 020 P 045 P 070 P 626 P 222 P 545 P 565 P 313 P 333 P 323 P 343				P 020 P 045 P 070 P 222 P 545				P 020 P 045 P 070 P 626 P 222 P 545 P 565 P 313 P 333 P 323 P 343				P 020 P 045 P 070 P 626 P 222 P 545 P 565 P 313 P 333 P 323 P 343			
✂ Thickness																	
	Trimmed 98.43" × 49.21" (2500 × 1250 mm) 120.08" × 49.21" (3050 × 1250 mm)																

Authentic range:
 Swisspearl Patina NXT design line is a range of authentic, through-colored facade boards with unique features. Each facade board is as individual as nature itself. Each facade board features subtle variations in structure and surface, meeting the needs of architects and builders worldwide who value characteristic texture and a vibrant expression. Over time, the boards develop a beautiful patina, adding a distinctive aesthetic to the building design with unique, subtle surface variations.

- ⋮ Coating information (without mechanical surface treatment) ⌘ Coating information (with mechanical surface treatment)
- ⌘ Additional mechanical surface treatment (optional)
- Information on the coloring of the base panel
- † **High-Resistant Coating:** All Carat, Nobilis and Zenor colors are also available with HR coating. Vintago, Vintago-Reflex, Avera and Reflex are equipped with a transparent HR coating as standard. The coating is particularly weather-resistant and scratch-resistant, and allows dirt and graffiti to be easily removed. It serves added protection and therefore opens up more possibilities and space for architectural visions. Even if the environment is challenging, the result is a clean and long-lasting surface.

 A detailed list of the NCS Codes for all products shown can be found via the QR Code.

The printed colors may differ from the original shade of the color. To see the exact color, and when matching up colors on adjacent parts of a building, one must use the original panel samples. The natural ingredients used in the fiber cement panels will to some extent determine the unique character of the material. The intensity and color tone may vary slightly depending on the production batch.