



Wickham Community Hub

Wickham, Australia

Architect Gresleyabas, Perth, Australia

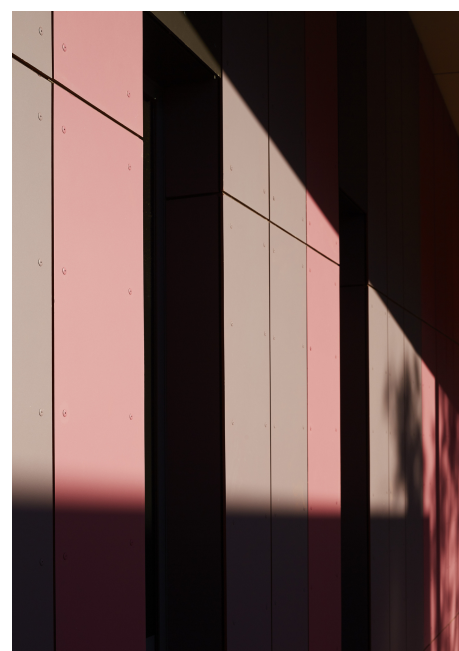
Facade

- Largo Swisspearl Carat Agate 7219
- Largo Swisspearl Carat Amber 7073
- Largo Swisspearl Carat Granite 7061
- Largo Swisspearl Carat Azurite 7040
- Largo Swisspearl Carat Azurite 7041
- Largo Swisspearl Carat Custom Color
- Largo Swisspearl Carat Coral 7032 HR
- Largo Swisspearl Carat Coral 7031
- Largo Swisspearl Carat Coral 7030
- Largo Swisspearl Carat Anthracite 7024
- Largo Swisspearl Carat Crystal 7010
- Largo Swisspearl Carat Sandstone 7002

Location Carse St, Wickham WA 6720, Australien

Photographer Acorn Photo, Subiaco, Australia

Type of Building Educational, Multipurpose, Sports & Recreation, Public



SWISSPEARL



After a fifteen-year planning period, the inhabitants of Wickham in Western Australia finally got their new community center. A bent roofscape encompasses the communal spaces. The group of buildings also integrate sexisting and new sports facilities. Gresley Abas Architects from Perth were responsible for the architectural concept of the new Wickham Community Hub, tailor-made for the needs of the population.

The building's main effect is created by the facade cladding, which is oriented in part outward, and in part toward the areaways. The cladding is composed of vertical stripes and solid-color Swisspearl fiber cement panels – 12,000 square meters of Swisspearl Carat in fourteen standard colors and eleven special colors.

